

**"Quality Uncompromising
and Unchanging"**

**ANNUAL
BULL SALE**

FEBRUARY 8, 2016



BB 1050 Advance 5005

**12:30 PM
AT THE
RANCH**

LUNCH AVAILABLE

**SELLING:
180 BULLS**



BB 102 Britisher 5026

HEREFORD BULLS

**80 SPRING AND
WINTER CALVES**

**50 COMING
2-YEAR-OLDS**

**8 COMING
2-YEAR-OLD
POLLED BULLS**



BB 0130 Domino 5018 ET



BB 102 Britisher 5037

ANGUS BULLS

**20 SPRING AND
WINTER CALVES**

**20 COMING
2-YEAR OLDS**



BB Top Shelf 4179



BB Top Shelf 4176

nfac



BB Cattle Co.

Bill Bennett & Family
PO Box 36, Connell, WA 99326

Bill Cell 509-551-6102

Joe Cell 509-551-6104

Leslie Cell 509-551-6622

Jay Cell 509-551-6101

509-234-4361 • Fax 509-234-1001

bbcattle@bossig.com

www.bbcattle.com



BB 159 Domino 4178



BB Ten X 5003

BB Cattle Co's

Annual Spring Sale
Monday, February 8, 2016
Sale Starts at 12:30 p.m.
Lunch available

120 HEREFORD BULLS
72 Spring & Winter Calves -43 Coming 2-year old Bulls
5 Coming 2-year old Polled Hereford Bulls
34 ANGUS BULLS
17 Spring & Winter Calves -17 Coming 2-year old Bulls

Auctioneer: Rick Machado
Special Representatives

Jack Ward AHA.....	American Hereford Association
Mark Holt, AHA.....	208-369-7425
Shane Bedwell, AHA.....	816-218-2262
Logan Ipsen, WLJ.....	916-947-2392
Mark Frisbie, WLR.....	208-495-2601
Willard Wolf Cross Roads Cattle Co.....	509-994-8051

Terms & Conditions

Terms of the sale are cash. Each animal will be sold to the highest bidder. Bidding disputes will be settled by the auctioneer. Health certificates and brand clearances will be furnished. Bulls sold in this sale are guaranteed by the owners to be breeders, provided they are properly handled and cared for by the purchaser. Bulls failing to breed after a trial of six months may be returned to the seller if they are in good condition and in compliance with Washington State Health Regulations. If the bull proves a non-breeder, the bull will be replaced, or credit will be issued for the next year's sale. Seller is not liable for bulls lost due to injury or death. All announcements made from the auction block on sale day will take precedence over statements in the catalog or other advertising. We reserve the right to withdraw any sale lot not meeting our specification prior to sale time. All persons who attend the sale do at their own risk. BB Cattle Co nor any other persons connected with the sale assume liability, legal or otherwise, for accidents or loss of property. Anyone wishing to bid who cannot attend the sale may place phone bids by contacting the sale number, Bill, Joe, or any listed sale representative. Your bids will be handled as directed by you and in your best interest.

SALE DAY NUMBER:509-234-4361

Delivery

BB will assist you in the delivery of animals purchased in this sale. Delivery will be made on groups of five or more animals or on purchases of \$5000 or more within this state or adjoining states to a central location, all other animals will be delivered or arrangements for delivery will be made at the most reasonable cost.

Airlines:

To Spokane: All National Air Lines
To Pasco: Delta, Horizon, United Express

Motels:

Connell has two good ones.
Tumbleweed Motel, (509)234-2081
M&M Motel, (509)234-8811
Pasco, 35 miles South, has a number of excellent ones
Othello, 20 miles west, has two, Best Western-Lincoln Inn, Cabana Motel.

Welcome to our 2016 Bull Sale.

It is our pleasure to welcome friends, cattle producers and family to our annual bull sale. We are very excited and pleased with the set of bulls we have to offer you this year. Our program was started over 50 years ago and built on the belief that maintaining strong performance while improving uniformity and predictability would increase the most important part of our business our customer's bottom line. In doing this our cow herd is as good as they have ever been with special attention paid to udders and feet and are selected for traits that keep us all in the business that we love. Our cattle may not be perfect, but we are consistently striving to produce the best product possible for our #1 asset you our friends, you our CUSTOMER. Thank you for belief in our program.

Cattle are available for viewing anytime.

If you have any questions please feel free to contact us. We appreciate each of our customers and are committed to your success.

We hope to see you February 8th.
The Bennetts



Our sale will be broadcasted on LiveAuctions.tv
To view this sale live, simply log onto
liveauctions.tv and click on our sale.

If you have any questions you can contact Katie
Colyer at 208-599-2962.

Be sure to check our website the end of January
for videos of the sale bulls.



Please plan on joining us for our presale dinner on the evening
of February 7th at Michael Jay's Restaurant in Connell.
5:30 p.m. Social 6 p.m. Dinner

BB CATTLE CO. RETAINS A FULL ¼ SEMEN INTEREST IN EVERY SALE BULL.. Buyer will take full possession and retain full salvage value on the bull. Bulls collected for A.I. use will be done in the off season at the buyer's convenience with expense paid by BB Cattle Co. Call Bill Bennett 509-551-6102 for more information. Select sale lots will have additional interest/possession retained to be announced sale day. All Hereford bulls have been parentage verified and DNA tested to be IE Free, HY Free and Diluter Free by GeneSeek Labs. All Angus bulls are guaranteed AM Free, NH Free, CA Free and DD Free.



1 BB 1050 ADVANCE 5005
Calved 1-16-15 Bull 43569131 Tattoo B5005

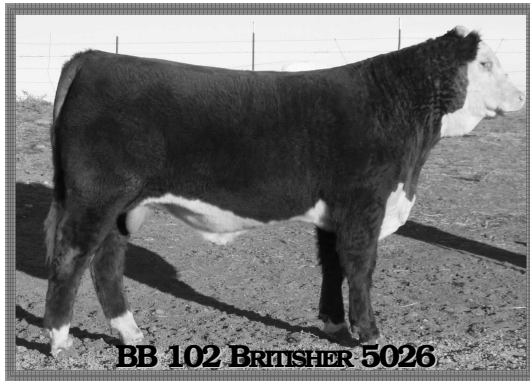
UPS DOMINO 3027
CX 3027 ADVANCE 1050
43242410 MCR HARLANDS MARKETTE 883

CHURCHILL PINSTRIPE 9124W
BB MS PINSTRIPE 2065
43302536 BB MS RC DOMINO 2024

CL 1 DOMINO 9126J ET
UPS MS DIAMOND1353
CJH HARLAND 408
MCR MARK DOM 4125
CHURCHILL YANKEE
CHURCHILL LADY 404
RCH DOMINO 9005
BBMS4209 MRKDON9348

Act BW	CED	BW	WW	YW	M	M&G	CEM
81	4.3	2.4	59	90	26	55	3.6
SC	FAT	RI	IMF	BMI	CEZ	BII	CHB
0.9	0.013	0.32	0.26	\$21	\$19	\$16	\$32

Adj WW 852 Ratio 117 Pigment LE20% RE 100%
B5005 is a complete bull from every angle that just has the look of a herd bull. Long bodied, thick made, well-marked with a very upscale look. That's backed by outstanding performance and great EPD's. His dam sure makes the package even more enticing, one of the young great Pinstripe cows on the place. The genetic potential and phenotype is endless in this calf.



2 BB 102 BRITISHER 5026
Calved 2-13-15 Bull 43587683 Tattoo B5026

FA 109L BRITISHER 71S
FA 71S BRITISHER 102W
43095662 FA BRITISHER LADY ET 5P

BB 9131 DOMINO 1065
BB MS 1065 DOMINO 7076
43021966 BB MS 9208 SANDMAN 1171

K 64H RIBSTONE LAD 109L
FA BRITISHER 125N
LPG 82B DON LAD 72K
FA BRITISHER LADY 94J
CL 1 DOMINO 9131J
BB MS32F SANDMAN 9149
BB 32F SANDMAN 9208
BB MS L1 DOM 4197

Act BW	CED	BW	WW	YW	M	M&G	CEM
84	-2.3	4.9	44	71	20	42	-0.4
SC	FAT	RI	IMF	BMI	CEZ	BII	CHB
0.5	-0.011	0.31	-0.05	\$12	\$11	\$11	\$18

Adj WW 793 Ratio 109 Pigment LE60% RE 0%
B5026 is a dynamo son of 102W with remarkable eye appeal. He is very well marked, with loads of red meat. His sire has the best foot and bone of all the bulls we have had or seen. His dam is a very good uddered 1065 daughter that produces a good calf every year. With this pedigree carcass comes at no extra charge. We think he will be a great herd sire prospect.



3 BB 0130 DOMINO 5018
Calved 2-4-15 Bull 43625427 Tattoo B5018

CL 1 DOMINO 860U
CL1 DOMINO 0130X 1ET
43082390 CL 1 DOMINETTE 440P

MH MONUMENT 3147
BB MS 3147 MONUMENT 6085 ET
42719936 BB MS M CLASSIC 8150

CL 1 DOMINO 637S 1ET
CL 1 DOMINETTE 5142R
CL 1 DOMINO 9126J
CL 1 DOMINETTE 974J
MH DAKOTA 0230
MH MISS PATRIOT 971
NX MARK CLASS 4411
BB MS DOM 3001 1ET

Act BW	CED	BW	WW	YW	M	M&G	CEM
85	0.1	3.0	60	100	30	60	-3.3
SC	FAT	RI	IMF	BMI	CEZ	BII	CHB
0.7	0.021	0.49	0.04	\$12	\$11	\$9	\$28

Adj WW 740 Ratio ET Pigment LE60% RE 100%
B5018 has the wind at his back for sure. 0130X and donor power house 6085B mating. Not often do you get EPD's that are this desirable in this attractive of a package. Tremendous combination of balance, style, with breed leading genetics. If you want herd bull power that will be seen in your herd for generations we sure know he has it.



4 BB 3014 DOMINO 5014
Calved 1-28-15 Calved 43569135 Tattoo B5014

CL 1 DOMINO 0130X 1ET
BB 0130X DOMINO 3014
43400821 BB MS 1083 DOMINO 9002

BB 7Z STD LAD4033
BB MS 4033 STD LAD 2092
43307674 BB MS 3007 MARK DON 8100

CL 1 DOMINO 860U
CL 1 DOMINETTE 440P
BB 9131 DOMINO 1083
BB MS MONUMENT 6007
COMMANDER STD LAD7Z
BB MS L1 DOMINO 9490
BB MARK DONALD 3007
BBMS 4209MARKDON2137

Act BW	CED	BW	WW	YW	M	M&G	CEM
82	-0.6	5.0	55	92	24	52	-0.1
SC	FAT	RI	IMF	BMI	CEZ	BII	CHB
0.9	0.003	0.33	-0.02	\$15	\$13	\$13	\$24

Adj WW 746 Ratio 102 Pigment LE100% RE 40%
B5014 is one of 7 bulls sired by our 2014 sale topper B3014 to sell this year. If you're looking to add eye appeal, performance, pigment, and maternal get you crayons out and circle this stud. You always hope that introducing a new herd sire will pay off and boy the proof is in the pudding. His dam is a great young cow by the old 4033 bull that need no introduction. Don't let the 5 birth EPD worry you with an 81 pound actual it must mean he is 5 times better than a 1.

2



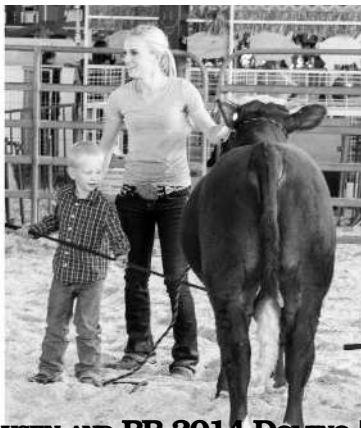
5 BB 102 BRITISHER 5037
 Calved 2-21-15 Bull 43587693 Tattoo B5037

FA 109L BRITISHER 71S
 FA 71S BRITISHER 102W
 43095662 FA BRITISHER LADY ET 5P

BB 9131 DOMINO 1083
 BB MS 1083 DOMINO 9003
 43094290 BB MS 3147 MONUMENT 6085
 K 64H RIBSTONE LAD 109L
 FA BRITISHER 125N
 LPG 82B DONALD LAD 72K
 FA BRITISHER LADY 94J
 CL 1 DOMINO 9131J
 BB MS 4209MARKDON9130
 MH MONUMENT 3147
 BB MS M CLASSIC 8150

Act BW	CED	BW	WW	YW	M	M&G	CEM
84	-2.5	4.3	41	68	23	44	-2.4
SC	FAT	RI	IMF	BMI	CEZ	BII	CHB
0.6	0.006	0.22	0.01	\$11	\$10	\$12	\$17

Adj WW 698 Ratio 96 Pigment LE100% RE 100%
 B5037 has a sure fire herd bull pedigree being a 102W and out of 9003B daughter out of our donor cow 6085B. He parades exceptional length of spine, muscle presence, rib contour, pigment and is very striking to analyze.



JAXSEN AND BB 3014 DOMINO 5029

6 BB 3014 DOMINO 5027
 Calved 2-13-15 Bull 43623930 Tattoo B5027

CL 1 DOMINO 0130X 1ET
 BB 0130X DOMINO 3014
 43400821 BB MS 1083 DOMINO 9002

UPS DOMINO 3027
 BB MS 3027 DOMINO 2044
 43307676 BB MS 626S NEON 8141

Act BW	CED	BW	WW	YW	M	M&G	CEM
86	2.1	4.4	59	106	35	65	1.0
SC	FAT	RI	IMF	BMI	CEZ	BII	CHB
0.9	-0.003	0.56	0.16	\$16	\$15	\$11	\$33

Adj WW 724 Ratio 99 Pigment LE100% RE 90%
 B5027 is one of my favorite because he is out of a cow I claim and she is a good three year old cow out 3027 her dam is a dam of distinctions and her daughter looks like she will be too. This calf is another 3014 calf that looks the part, he is so gentle you can hardly get him out of your way. He is thick and long bodied, really sound and has good feet and great EPDs across all the indexes. There are not a lot of Hereford bull with a +2.1 Calving Ease Direct and +106 Yearling Weight and a +35 Milk. If you need growth and milk in your cows this should be your bull.

7 BB 3014 DOMINO 5029
 Calved 2-14-15 Bull 43623926 Tattoo B5029

CL 1 DOMINO 0130X 1ET
 BB 0130X DOMINO 3014
 43400821 BB MS 1083 DOMINO 9002

BOWEN 3027 DOMINO 018
 BB MS 018 DOMINO 2036
 43295118 BB MS 626 NEON 0031

CL 1 DOMINO 860U
 CL 1 DOMINETTE 440P
 BB 9131 DOMINO 1083
 BB MS MONUMENT 6007
 UPS DOMINO 3027
 BOWEN 3147 BROOK 824
 CHURCHILL NEON 626S
 BBMS 4209MARKDON2166

Act BW	CED	BW	WW	YW	M	M&G	CEM
83	0.8	4.1	65	113	30	63	0.2
SC	FAT	RI	IMF	BMI	CEZ	BII	CHB
0.9	0.005	0.56	0.10	\$16	\$13	\$11	\$33

Adj WW 807 Ratio 103 Pigment LE100% RE 100%
 Another 3014 bull calf that is attractive with big goggle eyes on both eyes. He is out of one of the top three year olds on the ranch, she is out of a 3027 son and a 626S cow. This cow has a good udder and she is also goggle eyed. She produced the second top selling bull in our 2015 sale at \$11,500 to Dudley Brothers in Texas and he was my favorite. This calf is muscular with a big butt, really gentle and attractive. He has great EPD's with a +113 Yearling Weight. This calf should sire fabulous females and his calves should have red eyes as there are 5 generation of goggle eyes behind this calf.



8 BB 375 DOMINO 5033
 Calved 2-17-15 Bull 43587687 Tattoo B5033

CL 1 DOMINO 1161Y
 CL 1 DOMINO 375A
 43379742 CL 1 DOMINETTE 160Y 1ET

CL 1 DOMINO 0130X 1ET
 BB MS 0130X DOMINO 336
 43420650 BB MS 2056 MARK DON 5141
 CL 1 DOMINO 732T
 CL 1 DOMINETTE 4126P
 CL 1 DOMINO 929W
 CL 1 DOMINETTE 606S 1ET
 CL 1 DOMINO 860U
 CL 1 DOMINETTE 440P
 MDA MARK DONALD 2056
 BB MS4209 MARKDON2122

Act BW	CED	BW	WW	YW	M	M&G	CEM
78	1.5	3.3	59	87	29	59	0.4
SC	FAT	RI	IMF	BMI	CEZ	BII	CHB
1.2	0.000	0.35	-0.01	\$19	\$15	\$16	\$26

Adj WW 773 Ratio 112 Pigment LE 80% RE 100%
 This calf is the first calf to sell out of the very good Cooper bull 375 that we bought from Cooper in 2014. This bull sired 55 calves 30 bulls and 25 heifers all in 2015. We think this has a lot to say for this bull and the heifers that he was bred to. We think this is the best bull calf by 375 and he is out of a great two year old heifer out of 0130X. She has a super udder with lots of milk, she is thick and heavy quartered. I am sure this bull could be used on heifers with a 78 pound actual birth weight and being out of 0130X cow and 375. This bull calf has as good of Cooper genetics as a calf could have that does not come from Coopers. A definite herd bull prospect.



BB 159 DOMINO 4178

9 BB 159 DOMINO 4178
Calved 10-27-14 Bull 43555965 Tattoo B4178

CL 1 DOMINO 993W
CL 1 DOMINO 159Y 1ET
43216160 CL 1 DOMINETTE 6159S
MH MONUMENT 3147
BB MS 3147 MONUMENT 7051
43021946 BB MS 9131 DOMINO 3137

CL 1 DOMINO 637S 1ET
CL 1 DOMINETTE 5142R
HH ADVANCE 3113N ET
CL 1 DOMINETTE 4200P ET
MH DAKOTA 0230
MH MISS PATRIOT 971
CL 1 DOMINO 9131J
BB MS 32F SANDMAN 1001

Act BW	CED	BW	WW	YW	M	M&G	CEM
78	0.6	3.9	60	96	31	62	-1.1
SC	FAT	RI	IMF	BMI	CEZ	BII	CHB
0.6	0.005	0.39	0.01	\$12	\$12	\$8	\$27

Adj WW 814 Ratio 124 Pigment LE 100% RE 100%
B4178 will lead off our winter bull calves and he is a good one, being sired by the Cooper bull 159Y that we bought in the 2012 Cooper sale. This bull has turned out to be a real good breeding bull for heifer and bull calves. 4178 has the biggest Yearling Weight of all the winter bulls. He has a actual weight at 420 days of age of 1665 pounds. He has 109 Index for RE and 117 Index of IMF. His dam is a really good producing daughter by Monument. He has all the marks of being a really good herd bull prospect.



BB TOP SHELF 4176

11 BB TOP SHELF 4176
Calved 10-26-14 Bull 43555963 Tattoo B4176

CHURCHILL NEON 626S
BB TOP SHELF 2003
43273779 BB MS 9131 DOMINO 5160

SR COMPASS 1117
BB MS 1117 COMPASS 0132
43128313 BB MS 375 SELKIRK 6071

GH NEON 17N
CHURCHILL LADY 346
CL 1 DOMINO 9131J
BB MS 6149 CLASSIC 3 186
CJH HARLAND 408
SR MANDY 0101
DHR L1 SELKIRK
BB MS 9131 DOMINO 3278

Act BW	CED	BW	WW	YW	M	M&G	CEM
72	2.1	2.8	47	82	26	49	2.5
SC	FAT	RI	IMF	BMI	CEZ	BII	CHB
0.7	0.058	0.07	0.25	\$16	\$16	\$12	\$23

Adj WW 626 Ratio 94 Pigment LE 100% RE 100%
Another top calf by Top Shelf. This calf took a super picture and looks like a real herd bull prospect. He is built a lot like his sire thick from end to end and long bodied. He has real good EPD's and an actual weight at 420 days of 1470 pounds. He has a 100 ratio RE and 153 ratio IMF. His dam 0132 is a daughter of a Stuber bull sired by Harland 408 and 0132's dam is a 735 Selkirk daughter. Mark Donald on both and Harland on top. She has a real good udder, and is a medium sized cow that is well marked. This is a great prospect.



BB TOP SHELF 4179

10 BB TOP SHELF 4179
Calved 10-30-14 Bull 43555968 Tattoo B4179

CHURCHILL NEON 626S
BB TOP SHELF 2003
43273779 BB MS 9131 DOMINO 5160

BB 32F SANDMAN 0257
BB MS 0257 SANDMAN 6112
42718179 BB MS 32F SANDMAN 2059

GH NEON 17N
CHURCHILL LADY 346
CL 1 DOMINO 9131J
BB MS 6149 CLASSIC 3186
BP 146D SANDMAN 32F
BB MS LIBERTY 7096
BP 146D SANDMAN 32F
BB MS CHURCH 6302

Act BW	CED	BW	WW	YW	M	M&G	CEM
82	-0.9	5.6	65	119	22	55	1.9
SC	FAT	RI	IMF	BMI	CEZ	BII	CHB
0.7	-0.032	0.80	-0.06	\$15	\$12	\$9	\$33

Adj WW 776 Ratio 118 Pigment LE 100% RE 100%
The first Top Shelf calf to sell is really a good one, red to the ground, very thick and muscular. This calf will really catch your eye as he has the look of an ideal range bull. Top Shelf is one of the best looking bulls that we have ever raised, thick, long and great on his feet and legs. BB Top Shelf 2003 was the top selling bull in our 2013 sale, selling half interest for \$15,500 to Richard Lawson, Lawson Hereford from New Pine Creek OR. Richard also thinks that he is the best bull he has ever seen. We have several real good bulls in the sale by him.



BB TOP SHELF 4182

12 BB TOP SHELF 4182
Calved 11-8-14 Bull 43555977 Tattoo B4182

CHURCHILL NEON 626S
BB TOP SHELF 2003
43273779 BB MS 9131 DOMINO 5160

BB 1083 DOMINO 5059
BB MS 5059 DOMINO 7100
42822841 BB MS 1065 DOMINO 5097

GH NEON 17N
CHURCHILL LADY 346
CL 1 DOMINO 9131J
BB MS 6149 CLASSIC 3186
BB 9131 DOMINO 1083
BB MS 9015 SANDMAN 2220
BB 9131 DOMINO 1065
BB MS WASH 8085

Act BW	CED	BW	WW	YW	M	M&G	CEM
80	0.8	4.0	61	101	25	55	1.7
SC	FAT	RI	IMF	BMI	CEZ	BII	CHB
0.7	0.010	0.48	0.13	\$16	\$14	\$11	\$31

Adj WW 732 Ratio 110 Pigment LE 20% RE 20%
This red soggy Top Self calf is a real high performance EPD bull with 61 WW and 110 YW EPD. He like all of these 2003s is very attractive and looks like a real herd bull. His dam has several generations of just BB breeding she has excellent EPDs with great carcass EPDs. This calf has a 104 RE Index, 123 Index for IMF and actual YW 1445 pounds at 408 days of age. He took a real good picture in the January Hereford World and that is what he looks like in real life only better. A herd bull prospect.

4

13 BB 159 DOMINO 4166

Calved 10-2-14 Bull 43555952 Tattoo B4166

CL 1 DOMINO 993W
CL 1 DOMINO 159Y 1ET
43216160 CL 1 DOMINETTE 6159S

CL 1 DOMINO 285M
BB MS 285M DOMINO 6102
42718169 BB MS 59K STD MARK 4096

CL 1 DOMINO 637S 1ET
CL 1 DOMINETTE 5142R
HH ADVANCE 3113N ET
CL 1 DOMINETTE 4200P ET
CL 1 DOMINO 9126J 1ET
CL 1 DOMINETTE 8184H
LPG 82B STAN LAD 59K
BB MS 4033 LAD 6127

Act BW	CED	BW	WW	YW	M	M&G	CEM
76	1.7	2.5	45	72	31	54	0.6
SC	FAT	RI	IMF	BMI	CEZ	BII	CHB
0.9	0.038	0.05	0.08	\$15	\$15	\$13	\$18

Adj WW 621 Ratio 94 Pigment LE 100% RE 80%
This 159Y calf is a red to the ground red eyed and thick. This calf's mother is a moderate real good looking cow that is sired by the great female sire 285M, we really like this cow. I think you will really like this calf. 4166 has 445 day weight of 1445 pounds, RE Ratio of 92 and IMF of 100.



14 BB 159 DOMINO 4187

Calved 11-22-14 Bull 43555982 Tattoo B4187

CL 1 DOMINO 993W
CL 1 DOMINO 159Y 1ET
43216160 CL 1 DOMINETTE 6159S

BB MARK DONALD 3007
R/J MS MARK 1072
43186236 BB MS CHURCH PATROL 0073
CHURCHILL PATROL 630
BB MISS SELKIRK 7072

CL 1 DOMINO 637S 1ET
CL 1 DOMINETTE 5142R
HH ADVANCE 3113N ET
CL 1 DOMINETTE 4200P ET
BB MARK DONALD 386
BB MS M CLASSIC 8150
CHURCHILL PATROL 630
BB MISS SELKIRK 7072

Act BW	CED	BW	WW	YW	M	M&G	CEM
78	1.1	4.1	47	86	34	57	0.4
SC	FAT	RI	IMF	BMI	CEZ	BII	CHB
0.8	0.003	0.28	-0.04	\$12	\$14	\$9	\$21

Adj WW 629 Ratio 94 Pigment LE 100% RE 100%
Here is another great calf by 159Y out of a very good Mark Donald cow. She is a straight Mark Donald cow being out of 3007, the closest bull to Mark Donald 77 in the country. These 3007 cows are the best older cows we have. They are very good uddered, moderate and thick made. This calf has 394 days of age he weight 1460 pounds and has a RE Ratio of 108.

15 BB 159 DOMINO 4185

Calved 11-16-14 Bull 43555980 Tattoo B4185

CL 1 DOMINO 993W
1 DOMINO 159Y 1ET
43216160 CL 1 DOMINETTE 6159S

BJ L1 DOMINO 2637
BB MS BJ DOMINO 8093
43117009 BB MS 3007 MARK DON 6060

CL 1 DOMINO 637S 1ETCL
CL 1 DOMINETTE 5142R
HH ADVANCE 3113N ET
CL 1 DOMINETTE 4200PET
XP L1 DOMINO 01050
BJ L1 DOMINETTE 2069
BB MARK DONALD 3007
BB MS 637 ADV 9205

Act BW	CED	BW	WW	YW	M	M&G	CEM
78	0.7	3.2	45	68	32	54	0.5
SC	FAT	RI	IMF	BMI	CEZ	BII	CHB
0.9	0.007	0.17	-0.02	\$14	\$14	\$13	\$18

Adj WW 642 Ratio 97 Pigment LE 100% RE 100%
These 159Y calves come right to the top being thick long and deep with tons of eye appeal. This guy is no exception. His dam is a very good 2637, a straight line one bull raised by Bonnie J Ranch. 2637 cows are all good uddered moderate sized cows that are among the best. This calf has a 400 day actual weight of 1340. I think you will like him.



16 BB 994 DOMINO 4167

Calved 10-5-14 Bull 43555953 Tattoo B4167

CL 1 DOMINO 637S
CL 1 DOMINO 994W 1ET
42982456 CL 1 DOMINETTE 440P

BB 9131 DOMINO 1065
BB MS 1065 DOMINO 5148
42601129 BB MS 8009 WASH 1099

L1 DOMINO 03396
CL 1 DOMINETTE 118L
CL 1 DOMINO 9126J
CL 1 DOMINETTE 974J
CL 1 DOMINO 9131J
BB MS 32F SANDMAN 9149
BB WASHINGTON 8009
BB MS 9013Y ADV 9136

Act BW	CED	BW	WW	YW	M	M&G	CEM
83	0.5	5.1	57	97	23	51	-0.9
SC	FAT	RI	IMF	BMI	CEZ	BII	CHB
1.0	0.040	0.25	0.22	\$18	\$14	\$15	\$28

Adj WW 698 Ratio 106 Pigment LE 0% RE 100%
This is a really big stout calf out of 994W the best bull Cooper's has ever raised. He is big, thick, heavy boned and the best rear ended Cooper bull ever. Consistently high performing calves both weaning and yearling. This bull is no exception at 442 days he weighed 1665 pounds. He recorded 100 Ratio for RE and 161 Ratio for IMF. This is a really powerful bull out of a super 1065 cow. This calf will add pounds to you calf crop.

17 BB 159 DOMINO 4173

Calved 10-21-14 Bull 43555960 Tattoo B4173

CL 1 DOMINO 993W
CL 1 DOMINO 159Y 1ET
43216160 CL 1 DOMINETTE 6159S

CHURCHILL NEON 626S
BB MS 626 NEON 0034
43128162 BB MS 4033 LAD 5113

CL 1 DOMINO 637S 1ET
CL 1 DOMINETTE 5142R
HH ADVANCE 3113N ET
CL 1 DOMINETTE 4200P 1ET
GH NEON 17N
CHURCHILL LADY 346
BB 7Z STD LAD 4033
BB MS HI TECH 3247

Act BW	CED	BW	WW	YW	M	M&G	CEM
77	0.6	4.1	55	98	30	58	2.3
SC	FAT	RI	IMF	BMI	CEZ	BII	CHB
0.8	-0.004	0.36	0.01	\$14	\$14	\$10	\$26

Adj WW 703 Ratio 107 Pigment LE 100% RE 100%
B4173 is again another really nice 159Y calf that has 100% pigment on both eyes. He is out of a super redested cow by 626S. This bulls 400 day actual YW is 1340. Look him over on sale day.

18 BB 159 DOMINO 4171

Calved 10-14-14 Bull 43555958 Tattoo B4171

CL 1 DOMINO 993W
CL 1 DOMINO 159Y 1ET
43216160 CL 1 DOMINETTE 6159S

BB MARK DONALD 3007
R/J MS MARK 1034
43186203 MDA MS MARK 1067

CL 1 DOMINO 637S 1ET
CL 1 DOMINETTE 5142R
HH ADVANCE 3113N ET
CL 1 DOMINETTE 4200P ET
BB MARK DONALD 386
BB MS M CLASSIC 8150
DH BEAU MARK 453
BB MS 4209 MARK DON 9147

Act BW	CED	BW	WW	YW	M	M&G	CEM
75	0.9	3.3	47	76	32	55	0.8
SC	FAT	RI	IMF	BMI	CEZ	BII	CHB
0.8	-0.024	0.37	-0.11	\$13	\$14	\$11	\$20

Adj WW 649 Ratio 99 Pigment LE 60% RE 60%
B4171 another real outstanding 159Y with a 75 pound birth weight and 3.2 WW EPD. His dam is a very good 3 year old cow by 3007 and out of a line bred Mark Donald cow. This calf had a 433 day YW of 1500 pounds, he is a very attractive bull.

19 BB 102 BRITISHER 5036

Calved 2-20-15 Bull 43587691 Tattoo B5036

FA 109L BRITISHER 71S K 64H RIBSTONE LAD 109L
 FA 71S BRITISHER 102W FA BRITISHER 125N
 43095662 FA BRITISHER LADY ET 5P LPG 82B DONALD LAD 72K
 CHURCHILL NEON 626S FA BRITISHER LADY 94J
 BB MS 626 NEON 1045 GH NEON 17N
 43198581 BB MS LANDMARK 1108 CHURCHILL LADY 346
 BP LANDMARK 126H
 BB MS ADVANCE 6004 1ET

Act BW	CED	BW	WW	YW	M	M&G	CEM
83	-2.9	5.1	48	87	24	48	-0.2
SC	FAT	RI	IMF	BMI	CEZ	BII	CHB
0.7	-0.025	0.30	0.04	\$13	\$11	\$12	\$23

Adj WW 785 Ratio 108 Pigment LE 10% RE 100%
 This 102W son is a real powerful red eyed calf. He is a real credit to what 102W is going to do. I can't emphasize enough how sound 102W is, he is a 7 year old bull and has never had his feet touched and they look great. Everybody should come look at this powerful sound bull. B5036 is a good one.

20 BB 994 DOMINO 5004

Calved 1-14-15 Bull 43569391 Tattoo B5004

CL 1 DOMINO 637S L1 DOMINO 03396
 CL 1 DOMINO 994W 1ET CL 1 DOMINETTE 118L
 42982456 CL 1 DOMINETTE 440P CL 1 DOMINO 9126J
 MH MONUMENT 3147 CL 1 DOMINETTE 974J
 BB MS MONUMENT 5037 MH DAKOTA 0230
 42582112 BB MS WASH 8159 MH MISS PATRIOT 971
 BB WASHINGTON 2041
 BB MS KERNEL 1065

Act BW	CED	BW	WW	YW	M	M&G	CEM
85	-0.5	4.3	49	85	23	48	-4.1
SC	FAT	RI	IMF	BMI	CEZ	BII	CHB
0.6	0.007	0.36	-0.01	\$11	\$11	\$10	\$22

Adj WW 711 Ratio 98 Pigment LE 30% RE 10%
 This 994W son is big, stout and is out of a older Monument cow that brings in a good one every year. This bull will be a great sire, you have a lot of the powerful bulls in the breed right at the top of this pedigree. This is a free moving get right after it kind of bull.

21 BB 3007 MARK DON 5002

Calved 1-4-15 Bull 43569390 Tattoo B5002

BB MARK DONALD 386 BB MARK DONALD 549
 BB MARK DONALD 3007 LADY SELKIRK J770
 42364214 BB MS M CLASSIC 8150 NX MARK CLASS 4411
 BB 9131 DOMINO 1065 BB MS DOM 3001 1ET
 BB MS 1065 DOMINO 8161 CL 1 DOMINO 9131J
 43117002 BB MS 32F SANDMAN 3050 BB MS 32F SANDMAN 9149
 BP 146D SANDMAN 32F
 BB MS 9012Y ADV 9108

Act BW	CED	BW	WW	YW	M	M&G	CEM
84	1.1	3.6	53	77	28	55	1.1
SC	FAT	RI	IMF	BMI	CEZ	BII	CHB
0.6	-0.021	0.50	-0.07	\$14	\$14	\$11	\$24

Adj WW 779 Ratio 107 Pigment LE 10% RE 100%
 This 3007 son is a definite herd bull for anyone looking for a Mark Donald herd sire. He is well marked, red right down to the ground. He is a big scamp, he is long bodied and walks proud with his head up. He has a very good 1065 dam that has a great calf every year. Be sure and look him over.

22 BB 3014 DOMINO 5006

Calved 1-17-15 Bull 43569132 Tattoo B5006

CL 1 DOMINO 0130X 1ET CL 1 DOMINO 860U
 BB 0130X DOMINO 3014 CL 1 DOMINETTE 440P
 43400821 BB MS 1083 DOMINO 9002 BB 9131 DOMINO 1083
 CHURCHILL NEON 626S GH NEON 17N BB MS MONUMENT 6007
 BB MS 626 NEON 1133 CHURCHILL LADY 346
 43259948 BB MS 767G ADVANCE 6076 HH ADVANCE 767G 1ET
 BB MS 1065 DOMINO 4097

Act BW	CED	BW	WW	YW	M	M&G	CEM
81	1.4	3.6	65	116	30	63	1.0
SC	FAT	RI	IMF	BMI	CEZ	BII	CHB
0.8	-0.015	0.61	-0.05	\$15	\$13	\$9	\$34

Adj WW 816 Ratio 112 Pigment LE 60% RE 0%
 This 3014 son is a big stout heavy weaning calf. His dam was a second calf heifer with an excellent udder sired by 626S. As you look through these 3014 calves one can tell he sires as uniform set of calves as can be found, they are all good.

23 BB 3014 DOMINO 5013

Calved 1-27-15 Bull 43569134 Tattoo B5013

CL 1 DOMINO 0130X 1ET CL 1 DOMINO 860U
 BB 0130X DOMINO 3014 CL 1 DOMINETTE 440P
 43400821 BB MS 1083 DOMINO 9002 BB 9131 DOMINO 1083
 OT HARLAND 945 BB MS MONUMENT 6007
 BB MS 945 HARLAND 1135 C/J HARLAND 408
 43259951 BB MS 5132 MARK DON 9092 OT MISS L1 DOM 405
 BB 3007MARKDONALD5132
 BB MS2000 MARKDON 2040

Act BW	CED	BW	WW	YW	M	M&G	CEM
85	-0.1	4.5	57	97	28	56	0.1
SC	FAT	RI	IMF	BMI	CEZ	BII	CHB
0.9	0.002	0.52	0.00	\$15	\$13	\$12	\$27

Adj WW 757 Ratio 104 Pigment LE 90% RE 0%
 This 3014 son is out of a good cow, sired by the Gary Ottley bull 945 that we used as a heifer bull. 945 sired really good uddered, thick muscled moderate framed cows. He has looked the part all summer running with his mother.

24 BB 1003 MARK CLASS 5022

Calved 2-7-15 Bull 43623940 Tattoo B5022

NX MARK CLASS 4411 BBH MARK DOMINO 918
 BB 4411 MARK CLASS 1003 ET NX MS CLASSIC 9011
 43218057 BB MS ADV 6001 1ET HH ADVANCE 185A
 CHURCHILL YANKEE ET BB MS MARK DOM 0253
 BB MS YANKEE 1007 GH NEON 17N
 43193484 BB 9131 DOMINO 6032 CHURCHILL LADY 202
 CL 1 DOMINO 9131J
 BB MS0135 MARKDOM3320

Act BW	CED	BW	WW	YW	M	M&G	CEM
87	-0.1	4.8	49	77	21	45	0.2
SC	FAT	RI	IMF	BMI	CEZ	BII	CHB
0.6	-0.012	0.16	0.10	\$15	\$13	\$13	\$24

Adj WW 725 Ratio 99 Pigment LE 10% RE 0%
 This 1003 son is really a good bull. His mother is an outstanding Yankee cow. 1003 is a great looking bull, he is out breeding fall calving cows right now. When you get to the sale get one of us to show him to you. Here is a real prospect with a Mark Donald background. 1003's mother was one of our invetro cows out of the mother of 5376 and 9410.

25 BB 375 DOMINO 5010

Calved 1-25-15 Bull 43574018 Tattoo B5010

CL 1 DOMINO 1161Y CL 1 DOMINO 732T
 CL 1 DOMINO 375A CL 1 DOMINETTE 4126P
 43379742 CL 1 DOMINETTE 160Y 1ET CL 1 DOMINO 929W
 CX 3027 ADVANCE 1050 CL 1 DOMINETTE 606S 1ET
 BB MS 1050 ADVANCE 3017 UPS DOMINO 3027
 43399267 BB MS YANKEE 1011 MCR HARLANDS MARK 883
 CHURCHILL YANKEE ET
 BB MS MONUMENT 6024

Act BW	CED	BW	WW	YW	M	M&G	CEM
78	2.8	3.6	59	88	30	59	1.6
SC	FAT	RI	IMF	BMI	CEZ	BII	CHB
1.0	0.006	0.39	0.15	\$20	\$17	\$15	\$30

Adj WW 732 Ratio 106 Pigment LE 20% RE 80%
 This is a really good calf sired by 375, the Cooper bull we bought in 2014 as a heifer bull. We had 55 calves out of 375 in 2015 and only had to assist 3. One of these had a leg back and one was backwards, so we were happy with him as a heifer bull.

26 BB 375 DOMINO 5009

Calved 1-24-15 Bull 43574016 Tattoo B5009

CL 1 DOMINO 1161Y CL 1 DOMINO 732T
 CL 1 DOMINO 375A CL 1 DOMINETTE 4126P
 43379742 CL 1 DOMINETTE 160Y 1ET CL 1 DOMINO 929W
 BB MARK DONALD 3007 CL1 DOMINETTE 606S ET
 MS 3007 MARK DON 3008 BB MARK DONALD 386 BB
 43399265 BB MS 1065 DOMINO 8161 BB MS M CLASSIC 8150
 BB 9131 DOMINO 1065
 BB MS 32F SANDMAN 3050

Act BW	CED	BW	WW	YW	M	M&G	CEM
84	0.6	4.5	54	79	32	59	-0.1
SC	FAT	RI	IMF	BMI	CEZ	BII	CHB
1.0	-0.013	0.37	-0.01	\$16	\$14	\$14	\$24

Adj WW 747 Ratio 108 Pigment LE 50% RE 50%
 This 375 son is a really big stout calf. His mother is a 3007 daughter that has been a good one since birth. This bull should sire moderate birth weight, lots of performance and really good maternal.



27 BB 1050 ADVANCE 5011
 Calved 1-25-15 Bull Pending Tattoo B5011

UPS DOMINO 3027 CL 1 DOMINO 9126J 1ET
 CX 3027 ADVANCE 1050 UPS MISS DIAMOND 1353
 43242410 MCR HARLANDS MARK 883 ET CJH HARLAND 408
 BB MARK DONALD 3007 MCR MARK DOMINET 4125
 BB MS 3007 MARK DON 2160 BB MARK DONALD 386
 43353868 BB MS 3007 MARK DON 6089 BB MS M CLASSIC 8150
 BB MARK DONALD 3007
 BB MS124HHOMEBLDR2114

Act BW	CED	BW	WW	YW	M	M&G	CEM
84							
SC	FAT	RI	IMF	BMI	CEZ	BII	CHB

Act WW 660 Ratio Pigment LE 0% RE 10%
 This 1050 son is another low birth weight bull calf that is a big stout bull with great maternal behind him. These two year old females were really admired for their great udders on the NW Hereford tour this fall and I admire them everyday when I check the cows.

28 BB 375 DOMINO 5007
 Calved 1-20-15 Bull 43574015 Tattoo B5007

CL 1 DOMINO 1161Y CL 1 DOMINO 732T
 CL 1 DOMINO 375A CL 1 DOMINETTE 4126P
 43379742 CL 1 DOMINETTE 160Y 1ET CL 1 DOMINO 929W
 BB MARK DONALD 3007 CL 1 DOMINETTE606S ET
 BB MS 3007 DONALD 3011 BB MARK DONALD 386
 43391884 BB MS 1065 DOMINO 8149 BB MS M CLASSIC 8150
 BB 9131 DOMINO 1065
 BB MS124HHOMEBLDR 3067

Act BW	CED	BW	WW	YW	M	M&G	CEM
79	1.0	4.1	49	71	31	55	0.3
SC	FAT	RI	IMF	BMI	CEZ	BII	CHB
0.9	-0.003	0.30	0.00	\$16	\$15	\$14	\$21

Adj WW 663 Ratio 96 Pigment LE 0% RE 100%
 This is a really good 375 son. His dam is a outstanding 3007 daughter with a very good udder. I am going to repeat, these Mark Donald 3007 daughters are some of the best cows we have ever raised with the oldest being 10 years old now. We are really proud of this great Mark Donald bull being a grandson of Mark Donald 77 and his dam being sired by 4411. Two of the all time greats in the Hereford bred.

29 BB 375 DOMINO 5003
 Calved 1-6-15 Bull 43574008 Tattoo B5003

CL 1 DOMINO 1161Y CL 1 DOMINO 732T
 CL 1 DOMINO 375A CL 1 DOMINETTE 4126P
 43379742 CL 1 DOMINETTE 160Y 1ET CL 1 DOMINO 929W
 CHURCHILL PINSTRIPE 9124W CHURCHILL YANKEE ET
 BB MS PINSTRIPE 3030 CHURCHILL LADY 404
 43415395 BB MS MOUMENT 8050 MH MONUMENT 3147
 BB MS 8009 WASH 2178

Act BW	CED	BW	WW	YW	M	M&G	CEM
70	2.5	2.1	48	76	28	52	0.5
SC	FAT	RI	IMF	BMI	CEZ	BII	CHB
0.8	0.003	0.34	0.12	\$17	\$16	\$14	\$24

Adj WW 658 Ratio 95 Pigment LE 100% RE 100%
 This 375 son should be a real good heifer bull being 70 pound at birth and his Pinstripe dam had a 76 pound BW, this gives him a low BW history. Pinstripe is a Churchill bull sire by Yankee that was a top bull in the Churchill sale a few years back. He sires a lot of good heifers with great udders. Recommended for heifers.

30 BB 3004 DOMINO 5051
 Calved 3-6-15 Bull 43620140 Tattoo B5051

CL 1 DOMINO 0130X 1ET CL 1 DOMINO 860U
 BB 0130X DOMINO 3004 CL 1 DOMINETTE 440P
 43400820 BB MS 4209 MARK DON 1077 BB MARK DONALD 4209
 BB MS 4177 6191
 BB 6149 MO CLASSIC 3206 BB MARK CLASSIC 6149
 BB MS CLASSIC 6023 BB MS4209MARKDON0039
 42684255 BB MS ROBIN HOOD 2112 HR ROBIN HOOD 52F
 BB L1 DOMINO 6236

Act BW	CED	BW	WW	YW	M	M&G	CEM
91	-0.4	5.1	57	99	28	57	0.9
SC	FAT	RI	IMF	BMI	CEZ	BII	CHB
1.0	-0.011	0.37	0.01	\$16	\$13	\$13	\$27

Adj WW 806 Ratio 108 Pigment LE 80% RE 80%
 B5051 is a son of B3004 that was sold in our 2014 sale to Claude Ciomperlik, San Antonio TX. He was really thick, heavy boned and this calf has his performance. He is a stout well put together free moving calf that will make a super range bull. His dam is one of the best looking great uddered Mark Donald cow that you could find. Cameron Mulrony has a half sister to her that is his favorite cow.

31 BB 38 STANDARD LAD 5054 ET
 Calved 3-8-15 Bull 43620977 Tattoo B5054

STR STD 256B DOM LAD 68L BAR OM656 COMLAD 256B
 STANDARD 68L DOM LAD 38T STR 27Z STD DOMINO 46C
 43096259 K 64H RIBSTONE LADY 112 STD 16E RIBSTONE 64H
 K 45D SUPER LADY 19H
 MH MONUMENT 3147 MH DAKOTA 0230
 BB 3147 MONUMENT 6085 ET MH MISS PATRIOT 971
 42719936 BB MS M CLASSIC 8150 NX MARK CLASS 4411
 BB MS DOM 3001 1ET

Act BW	CED	BW	WW	YW	M	M&G	CEM
84	-1.7	5.1	51	80	29	55	-3.1
SC	FAT	RI	IMF	BMI	CEZ	BII	CHB
0.6	0.020	0.21	0.07	\$11	\$10	\$9	\$22

Adj WW 782 Ratio ET Pigment LE 100% RE 100%
 B5054 is quite a bull to write about, he is sired by a Canadian Bar Pipe bull 38T the most phenotypical of all the Canadian bull that we have seen. Bar Pipe tell us that he has sired super females with very good udders. If you are interested in a Canadian bred bull here is your bull. He is our ET calf out of one of the very best cows that we have raised, she is sired by Monument 3147 and her dam is a really good Mark Donald cow 8150. 8150 was flushed for several years and is in a lot of pedigrees on this ranch, she is the mother of 3007 along with several sisters to 6085. 6085 has been the mother to several good calves one being B1057 sold to Larry Stangle. B1057 was one of our Champion Pen of Three bulls at Reno. We are planning on breeding some cows AI to him next year. He is well marked, big heavy bone and thick. A herd bull prospect for sure.

32 BB 102 BRITISHER 5047
 Calved 3-3-15 Bull 43620052 Tattoo B5047

FA 109L BRITISHER 71S K 64H RIBSTONE LAD 109L
 FA 71S BRITISHER 102W FA BRITISHER 125N
 43095662 FA BRITISHER LADY ET 5P LPG 82B DONALD LAD 72K
 FA BRITISHER LADY 94J
 BB 9131 DOMINO 1065 CL 1 DOMINO 9131J
 BB MS 1065 DOMINO 7153 BB MS 32F SANDMAN 9149
 43021993 BB MS LANDMARK 3115 BP LANDMARK 126H
 BB MS 7354 TAR HEEL 9069

Act BW	CED	BW	WW	YW	M	M&G	CEM
90	-2.7	5.6	48	78	22	46	-0.7
SC	FAT	RI	IMF	BMI	CEZ	BII	CHB
0.6	-0.013	0.22	-0.06	\$12	\$10	\$11	\$19

Adj WW 811 Ratio 109 Pigment LE 100% RE 100%
 This is a big, very attractive 102W bull; one of the best looking bulls in the sale. He is one of the high performing bulls. I have mentioned how great 102W is but I want to emphasize how really good this bull is. The dam of this bull is an extra good breeding cow out of 1065. You look back in the records and she is always in the top for performance. This should be an ideal range bull, with performance and super sound in every way.

33 BB 102 BRITISHER 5059

Calved 3-13-15 Bull 43620098 Tattoo B5059

FA 109L BRITISHER 71S K 64H RIBSTONE LAD 109L
 FA 71S BRITISHER 102W FA BRITISHER 125N
 43095662 FA BRITISHER LADY ET 5P LPG 82B DONALD LAD 72K
 FA BRITISHER LADY 94J
 BB 1065 DOMINO 6081 BB 9131 DOMINO 1065
 BB MS 6081 DOMINO 8006 BB MS 2000 MARK DON2040
 43116859 BB MS 0135 MARK DOM 3120 BB 4209 MARK DOM 0135
 BB MS KERNEL 2007

Act BW	CED	BW	WW	YW	M	M&G	CEM
86	-3.8	5.2	38	63	22	41	-0.7
SC	FAT	RI	IMF	BMI	CEZ	BII	CHB
0.6	-0.014	0.15	-0.01	\$12	\$10	\$13	\$15

Adj WW 711 Ratio 95 Pigment LE 100% RE100%
 This 102W is just about a carbon copy of Lot 32. This bull's dam is a big thick deep bodied cow sired by a son of 1065 that topped our sale to Ken McMillen in NE. This bull is red eyed long bodied and sound. A good range bull prospect.

34 BB PINSTRIPE 5066

Calved 3-18-15 Bull 43620148 Tattoo B5066

CHURCHILL YANKEE ET GH NEON 17N
 CHURCHILL PINSTRIPE 9124W CHURCHILL LADY 202
 42992946 CHURCHILL LADY 404 CL 1 DOMINO 9126J 1ET
 CHURCHILL LADY 1192
 CL 1 DOMINO 9131J CL 1 DOMINO 5131E
 BB MS 9131 DOMINO 9007 CL 1 DOMINETTE 4148
 43117025 BB MS SELKIRK 5106 DHR L1 SELKIRK
 BB MS 9131 DOMINO 3027

Act BW	CED	BW	WW	YW	M	M&G	CEM
83	1.7	4.4	47	78	26	49	0.9
SC	FAT	RI	IMF	BMI	CEZ	BII	CHB
0.5	0.004	0.26	0.23	\$15	\$15	\$12	\$26

Adj WW 669 Ratio 90 Pigment LE 80% RE 10%
 Here is a very attractive son of Pinstripe out of a very good 9131J cow with a great udder. He will sire moderate calves that are very attractive. 9131 sire very good cows and two of our great herd bulls that did a lot for us, 1065 and 1083.

35 BB ADVANTAGE 5071

Calved 3-19-15 Bull 43620156 Tattoo B5071

CHURCHILL NEON 626S GH NEON 17N
 BB 626 ADVANTAGE 1059 CHURCHILL LADY 346
 43198754 BB MS 4033 LAD 5065 BB 7Z STD LAD 4033
 BB MS 32F SANDMAN 0033
 BJ L1 DOMINO 2637 XP L1 DOMINO 01050
 BB MS BJ DOMINO 9038 BJ L1 DOMINETTE 2069
 43117079 BB MS 1065 DOMINO 7043 BB 9131 DOMINO 1065
 BB MS 6149 CLASSIC 3163

Act BW	CED	BW	WW	YW	M	M&G	CEM
80	-0.2	3.7	49	83	19	44	1.6
SC	FAT	RI	IMF	BMI	CEZ	BII	CHB
0.6	-0.021	0.50	0.03	\$16	\$14	\$13	\$25

Adj WW 726 Ratio 97 Pigment LE 0% RE 100%
 What a story on this calf and his mother. When Jack Ward was here this summer on the NW Hereford Tour this is the cow and calf that he pick out of all the cows that he looked at. That is a pretty strong statement because Jack is a good judge of cattle. He is sired by one of the best young bulls we use B1059, he sires very uniform calves. They are moderate and attractive, with lots of pigment. This calf could make a great herd bull.

36 BB 375 DOMINO 5050

Calved 3-5-15 Bull 43620057 Tattoo B5050

CL 1 DOMINO 1161Y CL 1 DOMINO 732T
 CL 1 DOMINO 375A CL 1 DOMINETTE 4126P
 43379742 CL 1 DOMINETTE 160Y 1ET CL 1 DOMINO 929W
 CL 1 DOMINETTE 606S 1ET
 BB 7Z STD LAD 4033 COMMANDER STD LAD 7Z
 BB MS 4033 LAD 3063 BB MS L1 DOMINO 9490
 43415461 BB MS 8148 MARK DON 4029 PPF MARK DOMINO 8148
 BB MS 4177 LAD 7108

Act BW	CED	BW	WW	YW	M	M&G	CEM
74	1.3	3.2	49	72	27	52	1.3
SC	FAT	RI	IMF	BMI	CEZ	BII	CHB
1.0	-0.006	0.14	0.05	\$18	\$16	\$16	\$22

Adj WW 796 Ratio 107 Pigment LE 10% RE 100%
 This is my favorite 375 bull calf, I think he will make a terrific heifer bull with a 74 pound BW. This is a dark red very attractive calf. This bull is good enough to use on your registered cattle. Low birth weight and performance together.

37 BB ADVANTAGE 5069

Calved 3-19-15 Bull 43620154 Tattoo B5069

CHURCHILL NEON 626S GH NEON 17N
 BB 626 ADVANTAGE 1059 CHURCHILL LADY 346
 43198754 BB MS 4033 LAD 5065 BB 7Z STD LAD 4033
 BB MS 32F SANDMAN 0033
 UPS DOMINO 3027 CL 1 DOMINO 9126J 1ET
 BB MS 3027 DOMINO 1010 UPS MISS DIAMOND 1353
 43192143 BB MS 3007 MARK DON 9090BB MARK DONALD 3007
 BB MS 9131 DOMINO 3062

Act BW	CED	BW	WW	YW	M	M&G	CEM
82	2.7	3.8	62	102	31	62	3.0
SC	FAT	RI	IMF	BMI	CEZ	BII	CHB
0.8	-0.030	0.67	0.06	\$17	\$16	\$12	\$33

Adj WW 853 Ratio 114 Pigment LE 10% RE 50%
 This has been a good calf since the day he was born. His mother has the best two year old bull in the sale as far as I am concerned, Lot 78. B5069 is the kind you want, moderate BW with high weaning and yearling EPDs. Here is a real prospect.

38 BB 102 BRITISHER 5048

Calved 3-4-15 Bull 43620053 Tattoo B5048

FA 109L BRITISHER 71S K 64H RIBSTONE LAD 109L
 FA 71S BRITISHER 102W FA BRITISHER 125N
 43095662 FA BRITISHER LADY ET 5P LPG 82B DONALD LAD 72K
 FA BRITISHER LADY 94J
 CHURCHILL NEON 626S GH NEON 17N
 BB MS 626 NEON 1096 CHURCHILL LADY 346
 43208562 BB MS 3147MONUMENT 6067MH MONUMENT 3147
 BB MS 9015 SANDMAN 2262

Act BW	CED	BW	WW	YW	M	M&G	CEM
72	-1.7	3.0	38	75	21	40	-0.5
SC	FAT	RI	IMF	BMI	CEZ	BII	CHB
0.5	-0.016	0.38	0.09	\$13	\$12	\$12	\$20

Adj WW 686 Ratio 92 Pigment LE 60% RE 100%
 This 102W is very thick and moderate with a very low BW of 72 pounds. He will add thickness and muscle. He is out of a real nice 626S cow. This calf is real sound and free moving.

39 BB 102 BRITISHER 5045

Calved 3-1-15 Bull 43620050 Tattoo B5045

FA 109L BRITISHER 71S K 64H RIBSTONE LAD 109L
 FA 71S BRITISHER 102W FA BRITISHER 125N
 43095662 FA BRITISHER LADY ET 5P LPG 82B DONALD LAD 72K
 FA BRITISHER LADY 94J
 BB 5097 DOMINO 7052 BB 1083 DOMINO 5097
 BB MS 7052 DOMINO 0119 BB MS 1065 DOMINO 5014
 43128297 BB MS YANKEE 8041 CHURCHILL YANKEE ET
 BB MS 9131 DOMINO 3062

Act BW	CED	BW	WW	YW	M	M&G	CEM
78	-1.1	3.5	40	66	22	42	0.4
SC	FAT	RI	IMF	BMI	CEZ	BII	CHB
0.6	-0.015	0.18	0.08	\$14	\$13	\$14	\$19

Adj WW 752 Ratio 101 Pigment LE 50% RE 100%
 A nice mad 102W with very low birth weight. He is a real attractive calf with length. This calf is out of a good 7052 cow, with a nice udder. This is a free moving good footed calf that will make a real good range bull.

40 BB ADVANTAGE 5058

Calved 3-10-15 Bull 43620142 Tattoo B5058

CHURCHILL NEON 626S GH NEON 17N
 BB 626 ADVANTAGE 1059 CHURCHILL LADY 346
 43198754 BB MS 4033 LAD 5065 BB 7Z STD LAD 4033
 BB MS 32F SANDMAN 0033
 CHURCHILL YANKEE ET GH NEON 17N
 BB MS YANKEE 8041 CHURCHILL LADY 202
 43121832 BB MS 9131 DOMINO 3062 CL 1 DOMINO 9131J
 BB MS 32F SANDMAN 1057

Act BW	CED	BW	WW	YW	M	M&G	CEM
71	0.5	4.4	56	96	24	52	2.9
SC	FAT	RI	IMF	BMI	CEZ	BII	CHB
0.4	-0.029	0.57	0.10	\$14	\$14	\$10	\$30

Adj WW 675 Ratio Twin Pigment LE 0% RE 0%
 B5058 is another very nice 102W calf out of a very good Yankee cow. She is good uddered, very well balanced with a great rear end. This is a very good bull to fit with all the rest of the 102Ws.

45 BB 2001 BIG ARTHUR 5038

Calved 2-23-15 Bull 43634967 Tattoo B5038

Lot 41 to 47 This a very good group of older calves. There are two 102W, two 3014 and three Mark Donald calves. They are medium birth weight with good weaning. This is a nice bunch of real stout calves that will make a great set of range bulls.

41 BB 3014 DOMINO 5021

Calved 2-7-15 Bull 43623927 Tattoo B5021

CL 1 DOMINO 0130X 1ET
BB 0130X DOMINO 3014
43400821 BB MS 1083 DOMINO 9002

CL 1 DOMINO 860U
CL 1 DOMINETTE 440P
BB 9131 DOMINO 1083
BB MS MONUMENT 6007
CTY BRITISHER 107L
COURTNEY LASS 45J R424
TL 32F SANDMAN 013
BB MS 301 DOM 5030

CTY BRITISHER 7721T
BB MS 7721 BRITISHER 2019
43314995 BB MS 013 SANDMAN 6224

Act BW	CED	BW	WW	YW	M	M&G	CEM
86	-1.5	5.9	54	99	25	52	0.1
SC	FAT	RI	IMF	BMI	CEZ	BII	CHB
1.0	0.002	0.34	0.03	\$15	\$12	\$13	\$25

Adj WW 689 Ratio 94 Pigment LE 60% RE 60%

42 BB 102 BRITISHER 5025

Calved 2-12-15 Bull 43587679 Tattoo B5025

FA 109L BRITISHER 71S
FA 71S BRITISHER 102W
43095662 FA BRITISHER LADY ET 5P

K 64H RIBSTONE LAD 109L
FA BRITISHER 125N
LPG 82B DONALD LAD 72K
FA BRITISHER LADY 94J
CL 1 DOMINO 500E
H5 MS 9012 ADVAN 472
SR PASSAGE 441
BB MS 401 DOM 8255

H5 500 ADVANCE 897
BB MS 897 ADVANCE 5056
42575880 BB MS 441 MARK DON 3126

Act BW	CED	BW	WW	YW	M	M&G	CEM
88	-2.8	4.5	31	61	25	40	0.3
SC	FAT	RI	IMF	BMI	CEZ	BII	CHB
0.9	0.003	0.24	0.05	\$14	\$12	\$16	\$14

Adj WW 604 Ratio 83 Pigment LE 10% RE 100%

43 BB 3014 DOMINO 5028

Calved 2-14-15 Bull 43623931 Tattoo B5028

CL 1 DOMINO 0130X 1ET
BB 0130X DOMINO 3014
43400821 BB MS 1083 DOMINO 9002

CL 1 DOMINO 860U
CL 1 DOMINETTE 440P
BB 9131 DOMINO 1083
BB MS MONUMENT 6007
GH NEON 17N
CHURCHILL LADY 346
CL 1 DOMINO 9131J
BBMS4209MARKDON9043

CHURCHILL NEON 626S
BB MS 626 NEON 2024
43273777 BB MS 9131 DOMINO 7211

Act BW	CED	BW	WW	YW	M	M&G	CEM
86	-0.2	4.8	56	106	30	58	0.3
SC	FAT	RI	IMF	BMI	CEZ	BII	CHB
0.8	-0.002	0.59	0.08	\$14	\$12	\$10	\$29

Adj WW 672 Ratio 92 Pigment LE 100% RE 100%

44 BB 102 BRITISHER 5034

Calved 2-17-15 Bull 43587689 Tattoo B5034

FA 109L BRITISHER 71S
FA 71S BRITISHER 102W
43095662 FA BRITISHER LADY ET 5P

K 64H RIBSTONE LAD 109L
FA BRITISHER 125N
LPG 82B DONALD LAD 72K
FA BRITISHER LADY 94J
GH NEON 17N
CHURCHILL LADY 303
BP 146D SANDMAN 32F
BB MS PATRIOT 4067

CHURCHILL NEON 7127T ET
BB MS 7127 NEON 0158
43171617 BB MS 32F SANDMAN 2077

Act BW	CED	BW	WW	YW	M	M&G	CEM
80	-2.4	4.5	39	75	19	39	0.8
SC	FAT	RI	IMF	BMI	CEZ	BII	CHB
0.7	-0.016	0.31	0.05	\$15	\$12	\$14	\$19

Adj WW 739 Ratio 101 Pigment LE 100% RE 100%

SR BIG ARTHUR H201
BB H201 BIG ARTHUR 2001 ET
43344611 BB MS 6149 CLASSIC 2219

MARK ARTHUR 775
MS MARK DOMINO 767
BB MARK CLASSIC 6149
BB MS CHURCH 9055
UPS DOMINO 3027
BOWEN 3147 BROOK 824
BJ L1 DOMINO 2637
BB MS285M DOMINO6102

BOWEN 3027 DOMINO 018
BB MS 018 DOMINO 2083
43302554 BB MS 2637 BJ DOMINO 0079

Act BW	CED	BW	WW	YW	M	M&G	CEM
70	2.2	1.0	34	53	23	40	0.5
SC	FAT	RI	IMF	BMI	CEZ	BII	CHB
0.8	0.010	0.14	0.10	\$17	\$17	\$17	\$16

Adj WW 695 Ratio 95 Pigment LE 100% RE 100%

46 BB 1003 MARK CLASS 5043

Calved 2-28-15 Bull 43623922 Tattoo B5043

NX MARK CLASS 4411
BB 4411 MARK CLASS 1003 ET
43218057 BB MS ADV 6001 1ET

BBH MARK DOMINO 918
NX MS CLASSIC 9011
HH ADVANCE 185A
BB MS MARK DOM 0253
SR BIG ARTHUR H201
BB MS M CLASSIC 8150
BB 1065 DOMINO 4027
BB MS WASH 8007

BB H201 BIG ARTHUR 8180 ET
BB MS BIG ARTHUR 1078
43208543 BB MS 4027 DOMINO 6054

Act BW	CED	BW	WW	YW	M	M&G	CEM
83	-0.3	4.1	36	56	20	38	-0.8
SC	FAT	RI	IMF	BMI	CEZ	BII	CHB
0.6	-0.010	0.12	-0.08	\$13	\$13	\$14	\$13

Adj WW 648 Ratio 89 Pigment LE 90% RE 100%

47 BB SUPREMACY 5039

Calved 2-24-15 Bull 43623932 Tattoo B5039

PHR MARK BUSHMAN 4
BB SUPREMACY 1001
43187073 BB MS MARK 5100

COURT BUSHMAN 17R
HH MISS MARK A1
SR BIG ARTHUR H201
BB MS M CLASSIC 8150
GH NEON 17N
CHURCHILL LADY 346
MH MONUMENT 3147
BBMS 32FSANDMAN1044

CHURCHILL NEON 626S
BB MISS 626 NEON 1092
43208558 BB MS 3147 MONUMENT 7032

Act BW	CED	BW	WW	YW	M	M&G	CEM
83	-0.9	4.4	37	67	19	38	-0.3
SC	FAT	RI	IMF	BMI	CEZ	BII	CHB
0.3	-0.019	0.35	-0.10	\$10	\$12	\$10	\$16

Adj WW 639 Ratio 88 Pigment LE 100% RE 100%

Lot 48 to 56 This is a group of bulls out of two year old heifers and 375 and 1050. They give you low birth weight without losing any weaning weight. These calves are uniform and out of the best two year old heifers ever on this ranch and I think as good as there are in the country.

48 BB 1050 ADVANCE 5001

Calved 1-3-15 Bull 43569130 Tattoo B5001

UPS DOMINO 3027
CX 3027 ADVANCE 1050
43242410 MCR HARLANDS MARK 883

CL 1 DOMINO 9126J 1ET
UPS MISS DIAMOND 1353
CJH HARLAND 408
MCR MARK DOMINET4125
GH NEON 17N
CHURCHILL LADY 346
SR EXPECTATION 5130
BB MS 4052 LAD 7270

CHURCHILL NEON 626S
BB MS 626 NEON 297
43420656 BB MS EXPECTATION 4023

Act BW	CED	BW	WW	YW	M	M&G	CEM
68	4.0	1.7	52	86	28	54	3.9
SC	FAT	RI	IMF	BMI	CEZ	BII	CHB
0.8	-0.013	0.56	0.13	\$19	\$18	\$14	\$29

Adj WW 755 Ratio 109 Pigment LE 90% RE 20%

49 BB 1050 ADVANCE 5008

Calved 1-23-15 Bull 43569133 Tatoo B5008

UPS DOMINO 3027
CX 3027 ADVANCE 1050
43242410 MCR HARLANDS MARK 883

SR SAGA 239W
BB MS 239 SAGA 2171
43353880 BB MS 9131 DOMINO 6064

CL 1 DOMINO 9126J 1ET
UPS MISS DIAMOND 1353
CJH HARLAND 408
MCR MARK DOMINET 4125
CJH HARLAND 408
SR ROSA 323
CL 1 DOMINO 9131J
BB MS 32F SANDMAN 0033

Act BW	CED	BW	WW	YW	M	M&G	CEM
80	4.3	3.1	51	83	26	52	3.3
SC	FAT	RI	IMF	BMI	CEZ	BII	CHB
1.0	0.004	0.39	0.08	\$20	\$19	\$16	\$26

Adj WW 684 Ratio 99 Pigment LE 0% RE 0%

50 BB 375 DOMINO 5024

Calved 2-11-15 Bull 43587674 Tatoo B5024

CL 1 DOMINO 1161Y
CL 1 DOMINO 375A
43379742 CL 1 DOMINETTE 160Y 1ET

OT HARLAND 945
BB MS 945 HARLAND 3003
43391881 BB MS 626 NEON 0090

CL 1 DOMINO 732T
CL 1 DOMINETTE 4126P
CL 1 DOMINO 929W
CL 1 DOMINETTE 606S ET
CJH HARLAND 408
OT MISS L1 DOM 405
CHURCHILL NEON 626S
BB MS 013 SANDMAN 2263

Act BW	CED	BW	WW	YW	M	M&G	CEM
80	2.0	3.7	51	82	29	54	1.9
SC	FAT	RI	IMF	BMI	CEZ	BII	CHB
0.9	-0.001	0.46	0.02	\$17	\$16	\$14	\$24

Adj WW 657 Ratio 95 Pigment LE 100% RE 100%



51 BB 1050 ADVANCE 5023

Calved 2-11-15 Bull 43587671 Tatoo B5023

UPS DOMINO 3027
CX 3027 ADVANCE 1050
43242410 MCR HARLANDS MARK 883

BB 5097 DOMINO 7052
BB MS 7052 DOMINO 0113
43128283 BB MS 5132 MARK DON 8031

CL 1 DOMINO 9126J 1ET
UPS MISS DIAMOND 1353
CJH HARLAND 408
MCR MARK DOMINET 4125
BB 1083 DOMINO 5097
BB MS 1065 DOMINO 5014
BB 3007 MARK DON 5132
BB MS 3162 CLASSIC 5205

Act BW	CED	BW	WW	YW	M	M&G	CEM
72	2.7	1.4	42	63	32	53	2.1
SC	FAT	RI	IMF	BMI	CEZ	BII	CHB
0.7	0.010	0.20	0.06	\$15	\$17	\$13	\$19

Adj WW 691 Ratio 95 Pigment LE 100% RE 0%

52 BB 375 DOMINO 5019

Calved 2-5-15 Bull 43587668 Tatoo B5019

CL 1 DOMINO 1161Y
CL 1 DOMINO 375A
43379742 CL 1 DOMINETTE 160Y

CX 3027 ADVANCE 1050
BB MS 1050 ADVANCE 3021
43399271 BB MS 3B08 LAD 1004

CL 1 DOMINO 732T
CL 1 DOMINETTE 4126P
CL 1 DOMINO 929W
CL 1 DOMINETTE 606S ET
UPS DOMINO 3027
MCR HARLANDS MARK883
BB SELKIRK LAD 3B08
BB MS 3007 MARK DON 5112

Act BW	CED	BW	WW	YW	M	M&G	CEM
71	3.7	2.3	48	72	28	52	2.3
SC	FAT	RI	IMF	BMI	CEZ	BII	CHB
1.0	0.002	0.34	0.09	\$20	\$18	\$17	\$24

Adj WW 687 Ratio 99 Pigment LE 10% RE 10%

53 BB 375 DOMINO 5041

Calved 2-27-15 Bull 43587695 Tatoo B5041

CL 1 DOMINO 1161Y
CL 1 DOMINO 375A
43379742 CL 1 DOMINETTE 160Y 1ET

BB 3027 DOMINO 1018
BB MS 1018 DOMINO 3129
43412409 BB MS 1083 DOMINO 5040

CL 1 DOMINO 732T
CL 1 DOMINETTE 4126P
CL 1 DOMINO 929W
CL 1 DOMINETTE 606S
UPS DOMINO 3027
BB MS MONUMENT 6007
BB 9131 DOMINO 1083
BB MS 013 SANDMAN 2263

Act BW	CED	BW	WW	YW	M	M&G	CEM
73	3.1	2.9	50	80	31	56	1.2
SC	FAT	RI	IMF	BMI	CEZ	BII	CHB
1.0	0.006	0.35	0.08	\$18	\$17	\$15	\$24

Adj WW 666 Ratio 96 Pigment LE 30% RE 70%

54 BB 375 DOMINO 5032

Calved 2-16-15 Bull 43587686 Tatoo B5032

CL 1 DOMINO 1161Y
CL 1 DOMINO 375A
43379742 CL 1 DOMINETTE 160Y 1ET

CHURCHILL PINSTRIPE 9124W
BB MS PINSTRIPE 3107
43401281 BB MS BJ DOMINO 9037

CL 1 DOMINO 732T
CL 1 DOMINETTE 4126P
CL 1 DOMINO 929W
CL 1 DOMINETTE 606S
CHURCHILL YANKEE ET
CHURCHILL LADY 404
BJ L1 DOMINO 2637
BB MS MARK DOM 7092

Act BW	CED	BW	WW	YW	M	M&G	CEM
78	1.7	3.3	53	80	28	54	0.9
SC	FAT	RI	IMF	BMI	CEZ	BII	CHB
1.0	-0.003	0.39	0.11	\$19	\$16	\$16	\$26

Adj WW 694 Ratio 100 Pigment LE 100% RE 100%

55 BB 375 DOMINO 5020

Calved 2-6-15 Bull 43587669 Tatoo B5020

CL 1 DOMINO 1161Y
CL 1 DOMINO 375A
43379742 CL 1 DOMINETTE 160Y 1ET

CHURCHILL PINSTRIPE 9124W
BB MS PINSTRIPE 3027
43415392 BB MS 9131 DOMINO 6072

CL 1 DOMINO 732T
CL 1 DOMINETTE 4126P
CL 1 DOMINO 929W
CL 1 DOMINETTE 606S 1ET
CHURCHILL YANKEE ET
CHURCHILL LADY 404
CL 1 DOMINO 9131J
BB MS 441MARKDON 4027

Act BW	CED	BW	WW	YW	M	M&G	CEM
70	3.1	2.3	46	73	29	52	1.8
SC	FAT	RI	IMF	BMI	CEZ	BII	CHB
0.9	0.000	0.37	0.15	\$19	\$17	\$16	\$24

Adj WW 591 Ratio 85 Pigment LE 80% RE 90%

56 BB 375 DOMINO 5015

Calved 1-29-15 Bull 43574020 Tatoo B5015

CL 1 DOMINO 1161Y
CL 1 DOMINO 375A
43379742 CL 1 DOMINETTE 160Y 1ET

CL1 DOMINO 0130X 1ET
BB MS 0130X DOMINO 3070
43415475 BB MS 0135 MARK DON 6175

CL 1 DOMINO 732T
CL 1 DOMINETTE 4126P
CL 1 DOMINO 929W
CL 1 DOMINETTE 606S
CL 1 DOMINO 860U
CL 1 DOMINETTE 440P
BB 4209 MARK DOMO135
BB MS 9131DOMINO3181

Act BW	CED	BW	WW	YW	M	M&G	CEM
70	2.9	1.9	48	76	28	52	0.9
SC	FAT	RI	IMF	BMI	CEZ	BII	CHB
0.9	0.007	0.33	0.05	\$17	\$17	\$14	\$23

Adj WW 654 Ratio 94 Pigment LE 100% RE 100%

ANNA WITH BB TOP SHELF 4182



61 BB 3007 MARK DON 4180

Calved 11-2-14 Bull 43555975 Tattoo B4180

BB MARK DONALD 386 BB MARK DONALD 549
 BB MARK DONALD 3007 LADY SELKIRK J770
 42364214 BB MS M CLASSIC 8150 NX MARK CLASS 4411
 BB 9131 DOMINO 1065 BB MS DOM 3001 1ET
 CL 1 DOMINO 9131J
 BB MS 1065 DOMINO 7116 BB MS 32F SANDMAN 9149
 42822854 BB MS 4209MARKDON 0090 BB MARK DONALD 4209
 BB MS ADV 6002 1ET

Act BW	CED	BW	WW	YW	M	M&G	CEM
79	0.4	3.4	43	62	28	50	0.2
SC	FAT	RI	IMF	BMI	CEZ	BII	CHB
0.6	-0.012	0.21	0.06	\$14	\$14	\$13	\$20

Adj WW 642 Ratio 98 Pigment LE 100% RE 10%

62 BB EXCLUSIVE 4169

Calved 10-10-14 Bull 43555955 Tatto B4169

UPS DOMINO 3027 CL 1 DOMINO 9126J 1ET
 BB EXCLUSIVE 1026 UPS MISS DIAMOND 1353
 43216267 BB MS 013 SANDMAN 4231 TL 32F SANDMAN 013
 BB MS 7Z S LAD 8125
 GH NEON 17N
 CHURCHILL NEON 626S CHURCHILL LADY 346
 BB MS 626S NEON 8009 BB 7Z STD LAD 4033
 43116862 BB MS 4033 LAD 4022 BB MS 32F SANDMAN 0004

Act BW	CED	BW	WW	YW	M	M&G	CEM
76	3.5	2.5	52	78	25	51	4.1
SC	FAT	RI	IMF	BMI	CEZ	BII	CHB
0.7	0.012	0.46	0.33	\$21	\$18	\$17	\$30

Adj WW 684 Ratio 104 Pigment LE 100% RE 70%

63 BB TOP SHELF 4175

Calved 10-24-14 Bull 43555962 Tattoo B4175

CHURCHILL NEON 626S GH NEON 17N
 BB TOP SHELF 2003 CHURCHILL LADY 346
 43273779 BB MS 9131 DOMINO 5160 CL 1 DOMINO 9131J
 BB MS 6149 CLASSIC 3186
 CL 1 DOMINO 9131J
 BB MS 1065 DOMINO 1065 BB MS 32F SANDMAN 9149
 BB MS 1065 DOMINO 4030 BB 7Z STD LAD 4033
 42470935 BB MS 4033 LAD 7247 BB MS DOMINO 0325

Act BW	CED	BW	WW	YW	M	M&G	CEM
75	1.4	3.4	53	91	25	51	2.4
SC	FAT	RI	IMF	BMI	CEZ	BII	CHB
0.5	-0.016	0.50	0.00	\$14	\$14	\$10	\$26

Adj WW 653 Ratio 99 Pigment LE 90% RE 90%

64 BB EXCLUSIVE 4191

Calved 12-5-14 Bull 43555986 Tattoo B4191

UPS DOMINO 3027 CL 1 DOMINO 9126J 1ET
 BB EXCLUSIVE 1026 UPS MISS DIAMOND 1353
 43216267 BB MS 013 SANDMAN 4231 TL 32F SANDMAN 013
 BB MS 7Z S LAD 8125
 BB 7Z STD LAD 4033 COMMANDER STD LAD 7Z
 BB MS 4033 LAD 5139 BB MS L1 DOMINO 9490
 42601094 BB MS 4209 MARK DON 0039 BB MARK DONALD 4209
 BB MS ADV 6001 1ET

Act BW	CED	BW	WW	YW	M	M&G	CEM
80	1.9	4.1	46	74	23	46	2.8
SC	FAT	RI	IMF	BMI	CEZ	BII	CHB
0.8	0.003	0.24	0.25	\$20	\$17	\$17	\$26

Adj WW 640 Ratio Pigment LE 100% RE 100%



Lot 57 -72 This group of bulls are the rest of the winter calves. This is a excellent group of bulls that you need to take a look at. There are six of these calves that are out of Top Shelf, three by Exclusive, two 159Y, one 994W , one 3007 and one 1010. These bull are stout and ready to go to work.

57 BB 159 DOMINO 4164

Calved 9-10-14 Bull 43555950 Tattoo B4164

CL 1 DOMINO 993W CL 1 DOMINO 637S 1ET
 CL 1 DOMINO 159Y 1ET CL 1 DOMINETTE 5142R
 43216160 CL 1 DOMINETTE 6159S HH ADVANCE 3113N ET
 CL 1 DOMINETTE 4200PET
 BJ L1 DOMINO 2637 XP L1 DOMINO 01050
 BB MS 2637 BJ DOMINO 0055 BJ L1 DOMINETTE 2069
 43128212 BB MS 9131 DOMINO 7203 CL 1 DOMINO 9131J
 BB MS124HHOMEBLDR2102

Act BW	CED	BW	WW	YW	M	M&G	CEM
75	1.2	3.2	50	86	30	55	1.3
SC	FAT	RI	IMF	BMI	CEZ	BII	CHB
0.9	0.019	0.14	0.21	\$16	\$15	\$14	\$24

Adj WW 724 Ratio Pigment LE 100% RE 100%

58 BB 994 DOMINO 4165

Calved 9-21-14 Bull 43555951 Tattoo B4165

CL 1 DOMINO 637S L1 DOMINO 03396
 CL 1 DOMINO 994W 1ET CL 1 DOMINETTE 118L
 42982456 CL 1 DOMINETTE 440P CL 1 DOMINO 9126J
 CL 1 DOMINETTE 974J
 BJ L1 DOMINO 2007 ET XP L1 DOMINO 01050
 BB MS 2007 BJ DOMINO 0028 CL 1 DOMINETTE 8184H
 43128155 BB MS 1083 DOMINO 7150 BB 9131 DOMINO 1083
 BB MS 013 SANDMAN 4231

Act BW	CED	BW	WW	YW	M	M&G	CEM
72	0.3	3.8	51	83	19	45	-1.6
SC	FAT	RI	IMF	BMI	CEZ	BII	CHB
1.2	-0.006	0.43	0.10	\$21	\$15	\$20	\$26

Adj WW 698 Ratio 106 Pigment LE 50% RE 100%

59 BB 1010 LAD 4170

Calved 10-13-14 Bull 43555956 Tattoo B4170

BB SELKIRK LAD 3B08 SELKIRK LAD H3
 BB 3B08 LAD 1010 PW DOMINETTE 9
 43179567 BB MS 3007 MARK DON 8089 BB MARK DONALD 3007
 BB MS 9131 DOMINO 1065 BB MS 9131 DOMINO 3005
 BB MS 1065 DOMINO 8007 CL 1 DOMINO 9131J
 43116860 BB MS 9208 SANDMAN 1175 BB MS 32F SANDMAN 9149
 BB MS 32F SANDMAN 9208
 BB MISS SELKIRK 5111

Act BW	CED	BW	WW	YW	M	M&G	CEM
83	-0.3	5.2	52	87	19	45	0.0
SC	FAT	RI	IMF	BMI	CEZ	BII	CHB
0.5	-0.024	0.35	0.00	\$14	\$13	\$11	\$25

Adj WW 699 Ratio 106 Pigment LE 0% RE 0%

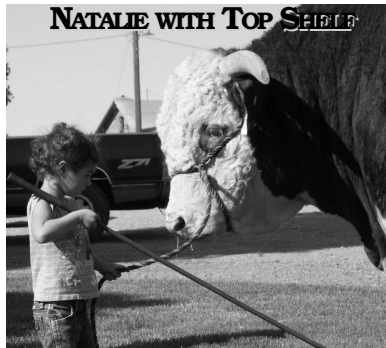
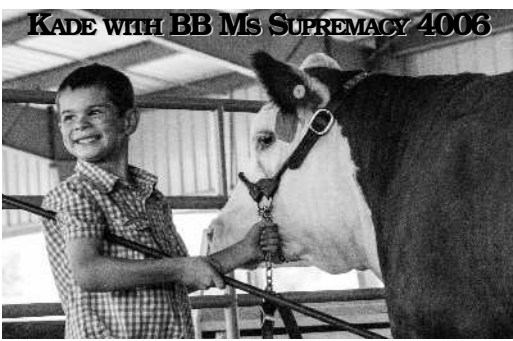
60 BB TOP SHELF 4174

Calved 10-23-14 Bull 43555961 Tattoo B4174

CHURCHILL NEON 626S GH NEON 17N
 BB TOP SHELF 2003 CHURCHILL LADY 346
 43273779 BB MS 9131 DOMINO 5160 CL 1 DOMINO 9131J
 BB MS 6149 CLASSIC 3186
 SR COMPASS 1117 CJH HARLAND 408
 BB MS 1117 COMPASS 0134 SR MANDY 0101
 43128315 BB MS 3007 MARK DON 7063 BB MARK DONALD 3007
 BB MS WASH 8101

Act BW	CED	BW	WW	YW	M	M&G	CEM
80	0.2	4.8	58	111	29	58	1.9
SC	FAT	RI	IMF	BMI	CEZ	BII	CHB
1.1	0.004	0.32	0.09	\$17	\$14	\$12	\$29

Adj WW 639 Ratio Pigment LE 20% RE 100%



65 BB 159 DOMINO 4172
Calved 10-18-14 Bull 43555959 Tattoo B4172

69 BB 3007 MARK DON 4183
Calved 11-11-14 Bull 43555978 Tattoo B4183

CL 1 DOMINO 993W
CL 1 DOMINO 159Y 1ET
43216160 CL 1 DOMINETTE 6159S
PHR MARK BUSHMAN 4
R/J MS MARK 1006 ET
43186193 KB DOMINETTE 353N ET
CL 1 DOMINETTE 7188G

BB MARK DONALD 386
BB MARK DONALD 3007
42364214 BB MS M CLASSIC 8150
CHURCHILL NEON 626S
BB MS 626S NEON 9028
43117057 BB MS 0257 SANDMAN 6167
BB MARK DONALD 549
LADY SELKIRK J770
NX MARK CLASS 4411
BB MS DOM 3001 1ET
GH NEON 17N
CHURCHILL LADY 346
BB 32F SANDMAN 0257
BBMS8007HRD DRIVE2095

Act BW	CED	BW	WW	YW	M	M&G	CEM
79	-0.4	4.5	40	61	28	48	0.3
SC	FAT	RI	IMF	BMI	CEZ	BII	CHB
0.6	-0.004	0.09	-0.07	\$11	\$13	\$11	\$15

Act BW	CED	BW	WW	YW	M	M&G	CEM
80	0.0	3.8	46	80	31	54	0.6
SC	FAT	RI	IMF	BMI	CEZ	BII	CHB
0.7	-0.038	0.52	0.01	\$14	\$13	\$12	\$24

Adj WW 645 Ratio 98 Pigment LE 50% RE 50%

Adj WW 578 Ratio 88 Pigment LE 90% RE 90%

66 BB 1010 LAD 4189
Calved 11-26-14 Bull 43555984 Tattoo B4189

70 BB TOP SHELF 4186
Calved 11-20-14 Bull 43555981 Tattoo B4186

BB SELKIRK LAD 3B08
BB 3B08 LAD 1010
43179567 BB MS 3007 MARK DON 8089
BB 1065 DOMINO 5105
BB MS 5105 DOMINO 8182
43117039 BB MS 1065 DOMINO 5049
SELKIRK LAD H3
PW DOMINETTE 9
BB MARK DONALD 3007
BB MS 9131 DOMINO 3005
BB 9131 DOMINO 1065
BB MS 6149 CLASSIC 1204
BB 9131 DOMINO 1065
BB MS RC DOMINO 2017

CHURCHILL NEON 626S
BB TOP SHELF 2003
43273779 BB MS 9131 DOMINO 5160
SR EXPECTATION 5130
BB MS EXPECTATION 5103
42601057 BB MS BJ COMAND 1049
GH NEON 17N
CHURCHILL LADY 346
CL 1 DOMINO 9131J
BB MS 6149 CLASSIC 3186
BBH MARK DOMINO 918
MIA KRISTIE 705
BJ L1 DOMINO 9513
BB MS WASH 9082

Act BW	CED	BW	WW	YW	M	M&G	CEM
75	0.4	4.5	43	71	17	39	1.3
SC	FAT	RI	IMF	BMI	CEZ	BII	CHB
0.5	0.014	0.15	0.07	\$15	\$14	\$13	\$21

Act BW	CED	BW	WW	YW	M	M&G	CEM
77	0.7	3.6	45	83	24	47	0.9
SC	FAT	RI	IMF	BMI	CEZ	BII	CHB
0.6	-0.010	0.42	0.15	\$15	\$14	\$13	\$25

Adj WW 572 Ratio 89 Pigment LE 0% RE 0%

Adj WW 612 Ratio 93 Pigment LE 100% RE 100%

67 BB 2125 DOMINO 4188
Calved 11-23-14 Bull 43555983 Tattoo B4188

71 BB 1050 ADVANCE 4190
Calved 11-20-14 Bull 43555985 Tattoo B4190

BJ L1 DOMINO 2637
BB 2637 DOMINO 2125
43323623 BB MS 4033 LAD 9026
L1 DOMINO 95461
BB MS 95461 DOMINO 7191 ET
42929643 BB MS 32F SANDMAN 9149
XP L1 DOMINO 01050
BJ L1 DOMINETTE 2069
BB 7Z STD LAD 4033
BB MS L1 DOM 9459
L1 DOMINO 93469
L1 DOMINETTE 880467
BP 146D SANDMAN 32F
BB MS L1 DOMINO 4095

UPS DOMINO 3027
CX 3027 ADVANCE 1050
43242410 MCR HARLANDS MARK 883
SR SAGA 239W
BB MS 239 SAGA 2158
43420352 BB MS 3007 DOMINO 7045
CL 1 DOMINO 9126J 1ET
UPS MISS DIAMOND 1353
CJH HARLAND 408
MCR MARK DOMINET 4125
CJH HARLAND 408
SR ROSA 323
BB MARK DONALD 3007
BB MS 1065 DOMINO 4077

Act BW	CED	BW	WW	YW	M	M&G	CEM
76	2.1	2.2	44	66	20	41	2.8
SC	FAT	RI	IMF	BMI	CEZ	BII	CHB
0.7	0.005	0.26	0.11	\$18	\$16	\$17	\$21

Act BW	CED	BW	WW	YW	M	M&G	CEM
77	4.3	2.2	43	65	28	49	3.4
SC	FAT	RI	IMF	BMI	CEZ	BII	CHB
0.9	0.014	0.29	0.15	\$20	\$19	\$17	\$22

Adj WW 602 Ratio 91 Pigment LE 100% RE 50%

Adj WW 575 Ratio 87 Pigment LE 50% RE 50%

68 BB TOP SHELF 4177
Calved 10-27-14 Bull 43555964 Tattoo B4177

72 BB EXCLUSIVE 4192
Calved 12-5-14 Bull 43555987 Tattoo B4192

CHURCHILL NEON 626S
BB TOP SHELF 2003
43273779 BB MS 9131 DOMINO 5160
CL 1 DOMINO 9131J
BB MS 9131 DOMINO 7195
42924699 BB MS LANDMARK 2022
GH NEON 17N
CHURCHILL LADY 346
CL 1 DOMINO 9131J
BB MS 6149 CLASSIC 3186
CL 1 DOMINO 5131E
CL 1 DOMINETTE 4148
BP LANDMARK 126H
BB MS 301 D 5124 1ET

UPS DOMINO 3027
BB EXCLUSIVE 1026
43216267 BB MS 013 SANDMAN 4231
BB 1083 DOMINO 5097
BB MS 5097 DOMINO 8027
43116899 BB MS 2009 LAD 5228
CL 1 DOMINO 9126J 1ET
UPS MISS DIAMOND 1353
TL 32F SANDMAN 013
BB MS 7Z S LAD 8125
BB 9131 DOMINO 1083
BB MS 6149 CLASSIC 2219
BB 4033 LAD 2009
BB MS 6149 CLASSIC 0305

Act BW	CED	BW	WW	YW	M	M&G	CEM
73	0.9	4.2	54	99	27	54	0.8
SC	FAT	RI	IMF	BMI	CEZ	BII	CHB
0.6	-0.011	0.47	-0.04	\$12	\$13	\$8	\$26

Act BW	CED	BW	WW	YW	M	M&G	CEM
65	3.0	3.1	49	83	25	49	2.6
SC	FAT	RI	IMF	BMI	CEZ	BII	CHB
1.0	0.033	0.21	0.47	\$23	\$18	\$19	\$30

Adj WW 556 Ratio 101 Pigment LE 0% RE 0%

Adj WW 550 Ratio 100 Pigment LE 90% RE 100%

77 BB 1050 ADVANCE 4009

Calved 1-10-14 Bull 43472246 Tattoo B4009

Lot 73-77 This is the start of the coming two year old bulls. 4012 is a really thick balanced kind of bull to head up the two year olds. His dam 5037 is a ten year old Monument cow that does a great job every year. The next three bulls are also 994W bulls and these are all big stout bulls with good WW and YW. These are the kind of bulls that sire performance calves with good carcass values. The Lot 77 bull is a 1050 calf that is stout and nice made with a 73 pound BW. He will make a real good heifer bull.

73 BB 994 DOMINO 4012

Calved 1-14-14 Bull 43472184 Tattoo B4012

CL 1 DOMINO 637S 1ET L1 DOMINO 03396
 CL 1 DOMINO 994W 1ET CL 1 DOMINETTE 118L
 42982456 CL 1 DOMINETTE 440P CL 1 DOMINO 9126J
 MH MONUMENT 3147 CL 1 DOMINETTE 974J
 BB MS MONUMENT 5037 MH DAKOTA 0230
 42582112 BB MS WASH 8159 MH MISS PATRIOT 971
 BB WASHINGTON 2041
 BB MS KERNEL 1065

Act BW	CED	BW	WW	YW	M	M&G	CEM
81	0.2	3.3	42	76	23	44	-3.7
SC	FAT	RI	IMF	BMI	CEZ	BII	CHB
0.6	-0.008	0.37	0.00	\$12	\$12	\$12	\$20

Adj WW 683 Ratio 85 Pigment LE 100% RE 100%

74 BB 994 DOMINO 4026

Calved 2-7-14 Bull 43480961 Tattoo B4026

CL 1 DOMINO 637S 1ET L1 DOMINO 03396
 CL 1 DOMINO 994W 1ET CL 1 DOMINETTE 118L
 42982456 CL 1 DOMINETTE 440P CL 1 DOMINO 9126J
 BB MARK DONALD 3007 CL 1 DOMINETTE 974J
 BB MS 3007 MARK DON 5116 BB MARK DONALD 386
 42601070 BB MS 4209 MARK DON 1257 BB MS M CLASSIC 8150
 BB MARK DONALD 4209
 BB MS 1267 DUKE 4205

Act BW	CED	BW	WW	YW	M	M&G	CEM
92	-1.2	4.6	46	71	21	48	-2.3
SC	FAT	RI	IMF	BMI	CEZ	BII	CHB
0.8	-0.020	0.50	-0.09	\$14	\$12	\$14	\$19

Adj WW 757 Ratio 94 Pigment LE 100% RE 100%

75 BB 994 DOMINO 4028

Calved 2-9-14 Bull 43480963 Tattoo B4028

CL 1 DOMINO 637S 1ET L1 DOMINO 03396
 CL 1 DOMINO 994W 1ET CL 1 DOMINETTE 118L
 42982456 CL 1 DOMINETTE 440P CL 1 DOMINO 9126J
 CL 1 DOMINO 9131J CL 1 DOMINETTE 974J
 BB MS 9131 DOMINO 9127 CL 1 DOMINO 5131E
 43117125 BB MS 3147 MONUMENT 7035 CL 1 DOMINETTE 4148
 MH MONUMENT 3147
 BBMS 32F SANDMAN0016

Act BW	CED	BW	WW	YW	M	M&G	CEM
86	0.5	4.2	46	78	26	49	-2.8
SC	FAT	RI	IMF	BMI	CEZ	BII	CHB
0.7	0.031	0.17	0.11	\$13	\$13	\$12	\$21

Adj WW 734 Ratio 91 Pigment LE 100% RE 80%

76 BB 994 DOMINO 4040

Calved 2-17-14 Bull 43480974 Tattoo B4040

CL 1 DOMINO 637S 1ET L1 DOMINO 03396
 CL 1 DOMINO 994W 1ET CL 1 DOMINETTE 118L
 42982456 CL 1 DOMINETTE 440P CL 1 DOMINO 9126J
 CL 1 DOMINO 9131J CL 1 DOMINETTE 974J
 BB 9131 DOMINO 6032 CL 1 DOMINO 5131E
 42684228 BB MS 0135 MARK DOM 3320 CL 1 DOMINETTE 4148
 BB 4209MARK DOM0135
 BB MS KERNEL 2007

Act BW	CED	BW	WW	YW	M	M&G	CEM
88	0.7	4.2	47	84	26	49	-2.0
SC	FAT	RI	IMF	BMI	CEZ	BII	CHB
0.9	0.033	0.13	0.12	\$15	\$13	\$13	\$21

Adj WW 766 Ratio 95 Pigment LE 100% RE 60%

UPS DOMINO 3027 CL 1 DOMINO 9126J 1ET
 CX 3027 ADVANCE 1050 UPS MISS DIAMOND 1353
 43242410 MCR HARLANDS MARK 883 CJH HARLAND 408
 MCR MARK DOMINET 4125
 CHURCHILL NEON 626S GH NEON 17N
 BB MS 626 NEON 1141 CHURCHILL LADY 346
 43259958 BB MS 3007 MARK DON 6161 BB MARK DONALD 3007
 BB MS 8009 WASH 2058

Act BW	CED	BW	WW	YW	M	M&G	CEM
73	3.7	2.2	51	79	30	55	3.5
SC	FAT	RI	IMF	BMI	CEZ	BII	CHB
0.9	0.004	0.35	0.29	\$21	\$18	\$17	\$29

Adj WW 782 Ratio 103 Pigment LE 100% RE 100%



78 BB TOP SHELF 4104

Calved 3-31-14 Bull 43494604 Tattoo B4104

CHURCHILL NEON 626S GH NEON 17N
 BB TOP SHELF 2003 CHURCHILL LADY 346
 43273779 BB MS 9131 DOMINO 5160 CL 1 DOMINO 9131J
 BB MS 3027 DOMINO 1010 BB MS 6149 CLASSIC 3186
 43192143 BB MS 3007 MARK DON 9090 CL 1 DOMINO 9126J IET
 UPS DOMINO 3027 UPS MISS DIAMOND 1353
 BB MS 9131 DOMINO 3062

Act BW	CED	BW	WW	YW	M	M&G	CEM
78	3.1	3.7	64	111	32	64	2.4
SC	FAT	RI	IMF	BMI	CEZ	BII	CHB
0.9	-0.006	0.61	0.16	\$18	\$16	\$12	\$32

Adj WW 796 Ratio 119 Pigment LE 100% RE 100%

In my humble opinion this is the best two year old bull in the sale and I think is and always has been a herd bull prospect. He is sired by Top Shelf and out of a super 3027 cow with a near perfect udder. This bull had a 78 pound BW, WW EPD of 64 and YW EPD 111 and an adjusted WW of 798 a Ratio 119. B4104 has 100% red eyes and has the look of a herd bull; long bodied, thick from end to end, on a good set of legs. Travels right out with his head up looking for cows. I think this bull has the combination of low birth, performance and carcass all wrapped in one.

Lot 79-80 B4108 is a goggle eyed real nice looking bull out of B1059. These bulls out of 1059 are all very attractive, they are all very good and thick. They are a great set of young coming two year old bulls. B4103 is an excellent Exclusive son that I think you are really going to like

79 BB ADVANTAGE 4108

Calved 4-3-14 Bull 43502166 Tattoo B4108

CHURCHILL NEON 626S GH NEON 17N
 BB 626 ADVANTAGE 1059 CHURCHILL LADY 346
 43198754 BB MS 4033 LAD 5065 BB 7Z STD LAD 4033
 CL 1 DOMINO 9131J BB MS 32F SANDMAN 0033
 BB MS 9131 DOMINO 7200 CL 1 DOMINO 5131E
 42924703 BB MS 6149 CLASSIC 3271 CL 1 DOMINETTE 4148
 BB MARK CLASSIC 6149
 BB MS 9013Y ADV 9136

Act BW	CED	BW	WW	YW	M	M&G	CEM
75	2.1	2.7	47	78	24	48	2.3
SC	FAT	RI	IMF	BMI	CEZ	BII	CHB
0.5	-0.017	0.36	0.02	\$14	\$16	\$11	\$23

Adj WW 689 Ratio Pigment LE 100% RE 100%

84 BB 994 DOMINO 4118

Calved 4-11-14 Bull 43502175 Tattoo B4118

80 BB EXCLUSIVE 4103

Calved 3-30-14 Bull 43494603 Tattoo B4103

UPS DOMINO 3027
BB EXCLUSIVE 1026
43216267 BB MS 013 SANDMAN 4231

BB MARK DONALD 3007
BB MS 3007 MARK DON 1044
43198575 BB MS 4027 DOMINO 6135

CL 1 DOMINO 9126J 1ET
UPS MISS DIAMOND 1353
TL 32F SANDMAN 013
BB MS 7Z S LAD 8125
BB MARK DONALD 386
BB MS M CLASSIC 8150
BB 1065 DOMINO 4027
BB MS 6149 CLASSIC 1002

Act BW	CED	BW	WW	YW	M	M&G	CEM
79	2.3	3.7	47	76	28	52	1.8
SC	FAT	RI	IMF	BMI	CEZ	BII	CHB
0.8	0.014	0.36	0.15	\$18	\$16	\$15	\$26

Adj WW 689 Ratio 103 Pigment LE 100% RE 100%

Lot 81-89 are big stout bulls that are as good of coming two year old bulls as you can buy. They are stout, heavy boned, deep bodied free moving good bulls.

81 BB 994 DOMINO 4105

Calved 4-1-14 Bull 43502163 Tattoo B4105

CL 1 DOMINO 637S
CL 1 DOMINO 994W 1ET
42982456 CL 1 DOMINETTE 440P

L1 DOMINO 03396
CL 1 DOMINETTE 118L
CL 1 DOMINO 9126J
CL 1 DOMINETTE 974J
LONE STAR DOMINO 75B
LS STAR MARKETTE 66C
BB 9131 DOMINO 1049
BB MS 9208SANDMAN 1155

DHR L1 SELKIRK
BB MISS SELKIRK 5059
42601015 BB MS 1049 DOMINO 3098

Act BW	CED	BW	WW	YW	M	M&G	CEM
83	0.4	4.8	49	75	25	49	-1.7
SC	FAT	RI	IMF	BMI	CEZ	BII	CHB
0.7	-0.015	0.42	-0.01	\$14	\$13	\$13	\$22

Adj WW 680 Ratio 102 Pigment LE 100% RE 100%

82 BB 994 DOMINO 4125

Calved 4-15-14 Bull 43502182 Tattoo B4125

CL 1 DOMINO 637S 1ET
CL 1 DOMINO 994W 1ET
42982456 CL 1 DOMINETTE 440P

L1 DOMINO 03396
CL 1 DOMINETTE 118L
CL 1 DOMINO 9126J
CL 1 DOMINETTE 974J
CL 1 DOMINO 9131J
BB MS 32F SANDMAN 9149
BB WASHINGTON 2041
BB MS PATRIOT 5121

BB 9131 DOMINO 1065
BB MS 1065 DOMINO 5097
42601052 BB MS WASH 8085

Act BW	CED	BW	WW	YW	M	M&G	CEM
80	0.7	4.4	52	89	23	49	-0.9
SC	FAT	RI	IMF	BMI	CEZ	BII	CHB
0.8	0.004	0.40	0.04	\$15	\$14	\$13	\$25

Adj WW 670 Ratio 101

83 BB 994 DOMINO 4115

Calved 4-9-14 Bull 43502172 Tattoo B4115

CL 1 DOMINO 637S 1ET
CL 1 DOMINO 994W 1ET
42982456 CL 1 DOMINETTE 440P

L1 DOMINO 03396
CL 1 DOMINETTE 118L
CL 1 DOMINO 9126J
CL 1 DOMINETTE 974J
CL 1 DOMINO 9131J
BB MS 4209MARKDON9130
CL 1 DOMINO 9131J
BB MS 32F SANDMAN 0033

BB 9131 DOMINO 1083
BB MS 1083 DOMINO 9008
43117027 BB MS 9131 DOMINO 6064

Act BW	CED	BW	WW	YW	M	M&G	CEM
75	1.8	3.6	50	88	24	49	-0.9
SC	FAT	RI	IMF	BMI	CEZ	BII	CHB
0.9	0.014	0.39	0.07	\$17	\$15	\$14	\$24

Adj WW 659 Ratio 99

Lot 88 Adj WW 677 Ratio Pigment LE 80% RE 90 %

CL 1 DOMINO 637S
CL 1 DOMINO 994W 1ET
42982456 CL 1 DOMINETTE 440P

BB 1065 DOMINO 6081
BB MS 6081 DOMINO 8006
43116859 BB MS 0135 MARK DOM 3320
BB MS KERNEL 2007

L1 DOMINO 03396
CL 1 DOMINETTE 118L
CL 1 DOMINO 9126J
CL 1 DOMINETTE 974J
BB 9131 DOMINO 1065
BB MS 2000MARKDON2040
BB 4209 MARK DOM 0135
BB MS KERNEL 2007

Act BW	CED	BW	WW	YW	M	M&G	CEM
80	0.5	4.5	53	86	24	51	-1.1
SC	FAT	RI	IMF	BMI	CEZ	BII	CHB
0.9	0.005	0.39	0.07	\$16	\$13	\$14	\$25

Adj WW 730 Ratio 110 Pigment LE 100% RE 80%

85 BB EXCLUSIVE 4077

Calved 3-15-14 Bull 43494576 Tattoo B4077

UPS DOMINO 3027
BB EXCLUSIVE 1026
43216267 BB MS 013 SANDMAN 4231

CHURCHILL YANKEE ET
BB MS YANKEE 1017
43193481 BB MS MONUMENT 6038

CL 1 DOMINO 9126J 1ET
UPS MISS DIAMOND 1353
TL 32F SANDMAN 013
BB MS 7Z S LAD 8125
GH NEON 17N
CHURCHILL LADY 202
MH MONUMENT 3147
BB MS124HHOMEBLDR0296

Act BW	CED	BW	WW	YW	M	M&G	CEM
81	1.9	4.3	55	90	26	54	2.1
SC	FAT	RI	IMF	BMI	CEZ	BII	CHB
0.6	0.017	0.35	0.43	\$19	\$16	\$14	\$33

Adj WW 688 Ratio 103 Pigment LE 0% RE 80%

86 BB EXCLUSIVE 4081

Calved 3-17-14 Bull 43494580 Tattoo B4081

UPS DOMINO 3027
BB EXCLUSIVE 1026
43216267 BB MS 013 SANDMAN 4231

CJH HARLAND 408
BB MS HARLAND 1014
43189199 BB MS 0257 SANDMAN 3123

CL 1 DOMINO 9126J 1ET
UPS MISS DIAMOND 1353
TL 32F SANDMAN 013
BB MS 7Z S LAD 8125
HH ADVANCE 9005J
CJH L1 DOMINETTE 0064
BB 32F SANDMAN 0257
BB MS PATRIOT 7050

Act BW	CED	BW	WW	YW	M	M&G	CEM
79	3.4	3.6	51	82	26	51	3.2
SC	FAT	RI	IMF	BMI	CEZ	BII	CHB
1.0	0.034	0.30	0.40	\$23	\$18	\$19	\$30

Adj WW 651 Ratio 98 Pigment LE 100% RE 0%

87 BB ADVANTAGE 4119

Calved 4-11-14 Bull 43502176 Tattoo B4119

CHURCHILL NEON 626S
BB 626 ADVANTAGE 1059
43198754 BB MS 4033 LAD 5065

BB 285M DOMINO 6051
BB MS 6051 DOMINO 8074
43116984 BB MS 9131 DOMINO 6164

GH NEON 17N
CHURCHILL LADY 346
BB 7Z STD LAD 4033
BB MS 32F SANDMAN 0033
CL 1 DOMINO 285M
BB MS 1065 DOMIINO 4077
CL 1 DOMINO 9131J
BB MS 59K STD MARK 4148

Act BW	CED	BW	WW	YW	M	M&G	CEM
81	0.1	4.4	57	92	26	54	1.4
SC	FAT	RI	IMF	BMI	CEZ	BII	CHB
0.7	-0.016	0.52	-0.03	\$15	\$13	\$11	\$26

Adj WW 730 Ratio Pigment LE 0% RE 0%

88 BB ADVANTAGE 4151

Calved 5-19-14 Bull 43512124 Tattoo B4151

CHURCHILL NEON 626S
BB 626 ADVANTAGE 1059
43198754 BB MS 4033 LAD 5065

BB MARK DONALD 3007
BB MS 3007 MARK DONALD 9095
43117456 BB MS 285M DOMINO 6111

GH NEON 17N
CHURCHILL LADY 346
BB 7Z STD LAD 4033
BB MS 32F SANDMAN 0033
BB MS MARK DONALD 386
BB MS M CLASSIC 8150
CL 1 DOMINO 285M
BB MS EXPECTATION 4023

Act BW	CED	BW	WW	YW	M	M&G	CEM
75	0.4	3.7	53	86	27	53	1.4
SC	FAT	RI	IMF	BMI	CEZ	BII	CHB
0.7	-0.036	0.64	-0.04	\$15	\$14	\$12	\$26

89 BB 159 DOMINO 4089

Calved 3-21-14 Bull 43494588 Tattoo B4089

CL 1 DOMINO 993W
 CL 1 DOMINO 159Y 1ET
 43216160 CL 1 DOMINETTE 6149S

SR PASSAGE 441
 BB MS 441 MARK DON 3035
 42380371 BB MS WASH 8085

CL 1 DOMINO 637S 1ET
 CL 1 DOMINETTE 5142R
 HH ADVANCE 3113N ET
 CL 1 DOMINETTE 4200P ET
 HR ROBIN HOOD 52F
 BB MS MARK DON 6329
 BB WASHINGTON 2041
 BB MS PATRIOT 5121

Act BW	CED	BW	WW	YW	M	M&G	CEM
75	0.4	3.7	44	74	31	52	1.9
SC	FAT	RI	IMF	BMI	CEZ	BII	CHB
0.9	-0.004	0.17	0.04	\$15	\$15	\$13	\$20

Adj WW 611 Ratio 92 Pigment LE 100% RE 100%

Lot 90 is a very good 1065 bull that is well shaped and an excellent range bull prospect. With a low birth weight of 78 pounds and we used this bull on a group of heifers last year.

90 BB 1065 DOMINO 4069

Calved 3-12-14 Bull 43494567 Tattoo B4069

CL 1 DOMINO 9131J
 BB 9131 DOMINO 1065
 42173637 BB MS 32F SANDMAN 9149

BB 5097 DOMINO 7052
 BB MS 7052 DOMINO 0133
 43128314 BB MS 3007 MARK DON 8109

CL 1 DOMINO 5131E
 CL 1 DOMINETTE 4148
 BP 146D SANDMAN 32F
 BB MS L1 DOMINO 4095
 BB 1083 DOMINO 5097
 BB MS 1065DOMINO5014
 BB MARK DONALD 3007
 BB MS 9131DOMINO5173

Act BW	CED	BW	WW	YW	M	M&G	CEM
78	1.1	3.9	55	80	27	54	1.4
SC	FAT	RI	IMF	BMI	CEZ	BII	CHB
0.4	0.009	0.36	0.03	\$13	\$14	\$9	\$24

Adj WW 879 Ratio 108

Lot 91-100 This group of bulls are all out of Exclusive and 159Y with the exception of lot 98 being out of 1050. He would be a great heifer bull at 73 pound birth weight. These 1050s throughout the sale will be excellent heifer bulls and are old enough to breed lots of heifers. These Exclusive bulls will add IMF to your feedlot cattle. They are a nice pen on uniform coming two year old bulls. You will drive a long ways to find better.

91 BB EXCLUSIVE 4051

Calved 2-27-14 Bull 43480984 Tattoo B4051

UPS DOMINO 3027
 BB EXCLUSIVE 1026
 43216267 BB MS 013 SANDMAN 4231

CHURCHILL YANKEE ET
 BB MS YANKEE 1022
 43198524 BB MISS SELKIRK 5079

CL 1 DOMINO 9126J 1ET
 UPS MISS DIAMOND 1353
 TL 32F SANDMAN 013
 BB MS 7Z S LAD 8125
 GH NEON 17N
 CHURCHILL LADY 202
 DHR L1 SELKIRK
 BB MS 6149 CLASSIC 3215

Act BW	CED	BW	WW	YW	M	M&G	CEM
80	2.8	3.5	45	65	23	45	3.5
SC	FAT	RI	IMF	BMI	CEZ	BII	CHB
0.5	-0.027	0.31	0.42	\$21	\$18	\$18	\$30

Adj WW 736 Ratio 95 Pigment LE 0% RE 0%

92 BB 159 DOMINO 4079

Calved 3-16-14 Bull 43494578 Tattoo B4079

CL 1 DOMINO 993W
 CL 1 DOMINO 159Y 1ET
 43216160 CL 1 DOMINETTE 6159S

BB 9131 DOMINO 1065
 BB MS 1065 DOMINO 8149
 43116933 BB MS 124HHOMEBLDR3067

CL 1 DOMINO 637S 1ET
 CL 1 DOMINETTE 5142R
 HH ADVANCE 3113N ET
 CL 1 DOMINETTE 4200P
 CL 1 DOMINO 9131J
 BB MS 32FSANDMAN 9149
 BP HOME BUILDER 124H
 BB MISS SELKIRK 4083

Act BW	CED	BW	WW	YW	M	M&G	CEM
85	-0.1	5.1	57	84	33	62	1.2
SC	FAT	RI	IMF	BMI	CEZ	BII	CHB
0.7	0.046	0.09	0.05	\$12	\$13	\$8	\$22

Adj WW 802 Ratio 111

Lot 97 Adj WW 734 Ratio Pigment LE 100% RE 50%

93 BB 159 DOMINO 4082

Calved 3-18-14 Bull 43494581 Tattoo B4082

CL 1 DOMINO 993W
 CL 1 DOMINO 159Y 1ET
 43216160 CL 1 DOMINETTE 6159S

BJ L1 DOMINO 2007 ET
 BB MS 2007 BJ DOMINO 0019
 43128130 BB MS 4033 LAD 1216

CL 1 DOMINO 637S 1ET
 CL 1 DOMINETTE 5142R
 HH ADVANCE 3113N ET
 CL 1 DOMINETTE 4200P
 XP L1 DOMINO 01050
 CL 1 DOMINETTE 8184H
 BB 7Z STD LAD 4033
 BB MS L1 DOMINO 5274

Act BW	CED	BW	WW	YW	M	M&G	CEM
80	0.3	4.2	53	87	28	54	0.7
SC	FAT	RI	IMF	BMI	CEZ	BII	CHB
1.0	0.016	0.13	0.10	\$17	\$14	\$14	\$24

Adj WW 819 Ratio

94 BB EXCLUSIVE 4112

Calved 4-6-14 Bull 43502170 Tattoo B4112

UPS DOMINO 3027
 BB EXCLUSIVE 1026
 43216267 BB MS 013 SANDMAN 4231

CHURCHILL YANKEE ET
 BB MS YANKEE 1015
 43193480 BB MS 32F SANDMAN 3255

CL 1 DOMINO 9126J 1ET
 UPS MISS DIAMOND 1353
 TL 32F SANDMAN 013
 BB MS 7Z S LAD 8125
 GH NEON 17N
 CHURCHILL LADY 202
 BP 146D SANDMAN 32F
 BB MS 4033 LAD 6008

Act BW	CED	BW	WW	YW	M	M&G	CEM
78	2.6	3.9	55	87	26	53	3.9
SC	FAT	RI	IMF	BMI	CEZ	BII	CHB
0.7	0.014	0.43	0.45	\$21	\$17	\$17	\$34

Adj WW 825 Ratio 106 Pigment LE 100% RE 100%

95 BB EXCLUSIVE 4094

Calved 3-24-14 Bull 43494594 Tattoo B4094

UPS DOMINO 3027
 BB EXCLUSIVE 1026
 43216267 BB MS 013 SANDMAN 4231

CHURCHILL NEON 626S
 BB MS 626 NEON 1067
 43198618 BB MS 0257 SANDMAN 3173

CL 1 DOMINO 9126J 1ET
 UPS MISS DIAMOND 1353
 TL 32F SANDMAN 013
 BB MS 7Z S LAD 8125
 GH NEON 17N
 CHURCHILL LADY 346
 BB 32F SANDMAN 0257
 BB MS 6330 STAN 9123

Act BW	CED	BW	WW	YW	M	M&G	CEM
84	1.9	4.5	57	105	29	57	3.0
SC	FAT	RI	IMF	BMI	CEZ	BII	CHB
0.9	0.014	0.51	0.37	\$20	\$16	\$15	\$35

Adj WW 784 Ratio 101 Pigment LE 100% RE 50%

96 BB 159 DOMINO 4076

Calved 3-15-14 Bull 43494575 Tattoo B4076

CL 1 DOMINO 993W
 CL 1 DOMINO 159Y 1ET
 43216160 CL 1 DOMINETTE 6159S

BB 4209 MARK DOM 0135
 BB MS 0135 MARK DON 6175
 42777458 BB MS 9131 DOMINO 3181

CL 1 DOMINO 637S 1ET
 CL 1 DOMINETTE 5142R
 HH ADVANCE 3113N ET
 CL 1 DOMINETTE 4200P
 BB MARK DONALD 4209
 BB MS ADV 6004 1ET
 CL 1 DOMINO 9131J
 BB MS LANDMARK 1143

Act BW	CED	BW	WW	YW	M	M&G	CEM
84	0.0	4.7	46	75	28	51	0.4
SC	FAT	RI	IMF	BMI	CEZ	BII	CHB
0.6	0.014	0.12	-0.01	\$11	\$13	\$10	\$18

Adj WW 707 Ratio 91 Pigment LE 100% RE 100%

97 BB 159 DOMINO 4088

Calved 3-21-14 Bull 43494587 Tattoo B4088

CL 1 DOMINO 993W
 CL 1 DOMINO 159Y 1ET
 43216160 CL 1 DOMINETTE 6159S

BB 285M DOMINO 6065
 BB MS 6065 DOMINO 8063
 43116970 BB MS 4036 CLASSIC 6098

CL 1 DOMINO 637S 1ET
 CL 1 DOMINETTE 5142R
 HH ADVANCE 3113N ET
 CL 1 DOMINETTE 4200P
 CL 1 DOMINO 285M
 BB MS 897 ADVANCE 4034
 BB 3022 CLASSIC 4036
 BB MS 9131 DOMINO 4007

Act BW	CED	BW	WW	YW	M	M&G	CEM
82	1.0	3.8	45	65	33	56	1.0
SC	FAT	RI	IMF	BMI	CEZ	BII	CHB
0.8	0.001	0.06	0.02	\$14	\$15	\$12	\$19

98 BB 1050 ADVANCE 4071

Calved 3-13-14 Bull 43494570 Tattoo B4071

UPS DOMINO 3027 CL 1 DOMINO 9126J 1ET
 CX 3027 ADVANCE 1050 UPS MISS DIAMOND 1353
 43242410 MCR HARLANDS MARK 883 CJH HARLAND 408
 MCR MARK DOMINET 4125
 BB MARK DONALD 3007 BB MARK DONALD 386
 BB MS 3007 MARK DON 2017 BB MS M CLASSIC 8150
 43273770 BB MS 626S NEON 8122 CHURCHILL NEON 626S
 BB MS BONANZA 4147

Act BW	CED	BW	WW	YW	M	M&G	CEM
73	3.2	3.3	54	85	31	58	2.6
SC	FAT	RI	IMF	BMI	CEZ	BII	CHB
0.9	-0.008	0.45	0.11	\$19	\$17	\$14	\$28

Adj WW 727 Ratio 107

99 BB EXCLUSIVE 4092

Calved 3-23-14 Bull 43494592 Tattoo B4092

UPS DOMINO 3027 CL 1 DOMINO 9126J 1ET
 BB EXCLUSIVE 1026 UPS MISS DIAMOND 1353
 43216267 BB MS 013 SANDMAN 4231 TL 32F SANDMAN 013
 BB MS 7Z S LAD 8125
 BB 5097 DOMINO 7052 BB 1083 DOMINO 5097
 BB MS 7052 DOMINO 0070 BB MS 1065 DOMINO 5014
 43128237 BB MS 626S NEON 8084 CHURCHILL NEON 626S
 BB MS 9131 DOMINO 40 82

Act BW	CED	BW	WW	YW	M	M&G	CEM
75	3.1	3.6	53	86	29	55	2.8
SC	FAT	RI	IMF	BMI	CEZ	BII	CHB
0.8	-0.006	0.43	0.31	\$20	\$17	\$15	\$31

Adj WW 741 Ratio 103

100 BB EXCLUSIVE 4060

Calved 3-7-14 Bull 43494555 Tattoo B4060

UPS DOMINO 3027 CL 1 DOMINO 9126J 1ET
 BB EXCLUSIVE 1026 UPS MISS DIAMOND 1353
 43216267 BB MS 013 SANDMAN 4231 TL 32F SANDMAN 013
 BB MS 7Z S LAD 8125
 CHURCHILL NEON 626S GH NEON 17N
 BB MS 626 NEON 1055 CHURCHILL LADY 346
 43198598 BB MS 0135 MARK DON 3305 BB 4209 MARK DOM 0135
 BB MS STAN LAD 4112

Act BW	CED	BW	WW	YW	M	M&G	CEM
79	1.7	4.0	49	90	25	50	2.7
SC	FAT	RI	IMF	BMI	CEZ	BII	CHB
0.7	-0.006	0.48	0.14	\$17	\$16	\$13	\$27

Adj WW 734 Ratio 97

Lot 101-115 This is the last pen of two year old bulls and I think you will agree with me that they are really a great set of bulls. Starting with B4085, that is a goggle eyed really good bull out of Exclusive. There are 5 other Exclusive bulls in this group. Three 1050 bulls that would all make great heifer bulls, they have 75, 73, 72 pound birth weights and without a doubt 1050 has been our all time top heifer bull. The daughters, as I already mentioned, have the best udders as a group that we have ever raised. They are a darn good set of bulls to close out the horned Herefords.

101 BB EXCLUSIVE 4085

Calved 3-20-14 Bull 43494584 Tattoo B4085

UPS DOMINO 3027 CL 1 DOMINO 9126J 1ET
 BB EXCLUSIVE 1026 UPS MISS DIAMOND 1353
 43216267 BB MS 013 SANDMAN 4231 TL 32F SANDMAN 013
 BB MS 7Z S LAD 8125SR
 SAGA 239W CJH HARLAND 408
 BB 239W MISS SAGA 1069 SR ROSA 323
 43198628 BB MS 626S NEON 8141 CHURCHILL NEON 626S
 BB MS 9131 DOMINO 5186

Act BW	CED	BW	WW	YW	M	M&G	CEM
79	2.9	4.0	55	93	30	57	2.9
SC	FAT	RI	IMF	BMI	CEZ	BII	CHB
0.9	0.005	0.46	0.33	\$21	\$17	\$16	\$33

Adj WW 690 Ratio 104

Lot 106 Adj WW 698

102 BB EXCLUSIVE 4073

Calved 3-14-14 Bull 43494572 Tattoo B4073

UPS DOMINO 3027 CL 1 DOMINO 9126J 1ET
 BB EXCLUSIVE 1026 UPS MISS DIAMOND 1353
 43216267 BB MS 013 SANDMAN 4231 TL 32F SANDMAN 013
 BB MS 7Z S LAD 8125BB
 H201 BIG ARTHUR 8180 SR BIG ARTHUR H201
 BB MS 8180 BIG ARTHUR 1042 BB MS M CLASSIC 8150
 43198570 BB MS LANDMARK 2156 BP LANDMARK 126H
 BB MS WASH 8007

Act BW	CED	BW	WW	YW	M	M&G	CEM
78	2.2	3.5	46	70	26	49	1.7
SC	FAT	RI	IMF	BMI	CEZ	BII	CHB
0.8	0.026	0.23	0.24	\$18	\$17	\$16	\$24

Adj WW 697 Ratio 105

103 BB 159 DOMINO 4102

Calved 3-28-14 Bull 43494602 Tattoo B4102

CL 1 DOMINO 993W CL 1 DOMINO 637S 1ET
 CL 1 DOMINO 159Y 1ET CL 1 DOMINETTE 5142R
 43216160 CL 1 DOMINETTE 6159S HH ADVANCE 3113N ET
 CL 1 DOMINETTE 4200P
 CHURCHILL NEON 626S GH NEON 17N
 BB MS 626 NEON 0014 CHURCHILL LADY 346
 43128116 BB MS 8009 WASH 2066 BB WASHINGTON 8009
 BB MSCHURCHPATRL 0088

Act BW	CED	BW	WW	YW	M	M&G	CEM
78	1.3	3.8	57	92	33	61	2.1
SC	FAT	RI	IMF	BMI	CEZ	BII	CHB
0.8	-0.006	0.44	0.05	\$15	\$15	\$11	\$28

Adj WW 739 Ratio

104 BB 159 DOMINO 4070

Calved 3-16-14 Bull 43494568 Tattoo B4070

CL 1 DOMINO 993W CL 1 DOMINO 637S 1ET
 CL 1 DOMINO 159Y 1ET CL 1 DOMINETTE 5142R
 43216160 CL 1 DOMINETTE 6159S HH ADVANCE 3113N ET
 CL 1 DOMINETTE 4200P
 CHURCHILL NEON 7127T ET GH NEON 17N
 BB MS 7127 NEON 0065 CHURCHILL LADY 303
 43128232 BB MS 013 SANDMAN 4231 TL 32F SANDMAN 013
 BB MS 7Z S LAD 8125

Act BW	CED	BW	WW	YW	M	M&G	CEM
74	1.7	2.9	45	76	28	51	3.0
SC	FAT	RI	IMF	BMI	CEZ	BII	CHB
0.8	0.012	0.34	0.11	\$17	\$16	\$14	\$22

Adj WW 578 Ratio 87

105 BB 1006 MARK CLASS 4080

Calved 3-16-14 Bull 43494579 Tattoo B4080

NX MARK CLASS 4411 BBH MARK DOMINO 918
 BB 4411 MARK CLASS 1006 ET NX MS CLASSIC 9011
 43218060 BB MS ADV 6001 1ET HH ADVANCE 185A
 BB MS MARK DOM 0253
 BB 9131 DOMINO 1065 CL 1 DOMINO 9131J
 BB MS 1065 DOMINO 6122 BB MS 32F SANDMAN 9149
 42719619 BB MS 4033 LAD 0162 BB 7Z STD LAD 4033
 BB MS 9410 DOM 3340

Act BW	CED	BW	WW	YW	M	M&G	CEM
79	-0.6	4.0	43	66	20	42	0.5
SC	FAT	RI	IMF	BMI	CEZ	BII	CHB
0.4	0.007	0.24	0.02	\$13	\$13	\$9	\$23

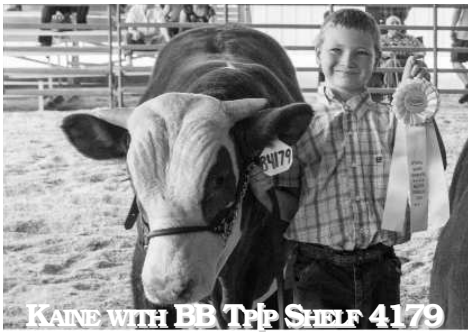
Adj WW 703 Ratio

106 BB 1050 ADVANCE 4137

Calved 4-29-14 Bull 43502195 Tattoo B4137

UPS DOMINO 3027 CL 1 DOMINO 9126J 1ET
 CX 3027 ADVANCE 1050 UPS MISS DIAMOND 1353
 43242410 MCR HARLANDS MARK 883 CJH HARLAND 408
 MCR MARK DOMINET 4125
 BB MARK DONALD 3007 BB MARK DONALD 386
 BB MS 3007 MARK DON 2057 BB MS M CLASSIC 8150
 43302529 BB MS 9131 DOMINO 5173 CL 1 DOMINO 9131J
 BB MS 6149 CLASSIC 3200

Act BW	CED	BW	WW	YW	M	M&G	CEM
75	4.1	2.5	48	72	30	54	2.4
SC	FAT	RI	IMF	BMI	CEZ	BII	CHB
0.9	-0.002	0.38	0.08	\$19	\$18	\$15	\$24



107 BB ADVANTAGE 4148

Calved 5-16-14 Bull 43512120 Tattoo B4148

CHURCHILL NEON 626S GH NEON 17N
 BB 626 ADVANTAGE 1059 CHURCHILL LADY 346
 43198754 BB MS 4033 LAD 5065 BB 7Z STD LAD 4033
 BB MS 32F SANDMAN 0033
 MH MONUMENT 3147 MH DAKOTA 0230
 BB MS 3147 MONUMENT 6067 MH MISS PATRIOT 971
 42718141 BB MS 9105 SANDMAN 2262 BB 32F SANDMAN 9015
 BB MS 804 DOM 5209

Act BW	CED	BW	WW	YW	M	M&G	CEM
74	-0.8	3.6	53	92	22	48	-0.6
SC	FAT	RI	IMF	BMI	CEZ	BII	CHB
0.4	-0.009	0.57	0.05	\$12	\$11	\$9	\$26

Adj WW 626 Ratio

108 BB 1050 ADVANCE 4133

Calved 4-23-14 Bull 43502191 Tattoo B4133

UPS DOMINO 3027 CL 1 DOMINO 9126J 1ET
 CX 3027 ADVANCE 1050 UPS MISS DIAMOND 1353
 43242410 MCR HARLANDS MARK 883 CJH HARLAND 408
 MCR MARK DOMINET 4125
 BOWEN 3027 DOMINO 018 UPS DOMINO 3027
 BB MS 018 DOMINO 2021 BOWEN 3147 BROOK 824
 43294995 BB MS 7052 DOMINO 0047 BB 5097 DOMINO 7052
 BB MS 3007MARK DON8020

Act BW	CED	BW	WW	YW	M	M&G	CEM
72	5.3	1.7	55	81	32	59	3.2
SC	FAT	RI	IMF	BMI	CEZ	BII	CHB
0.9	0.021	0.42	0.21	\$20	\$19	\$15	\$29

Adj WW 750 Ratio

109 BB 1050 ADVANCE 4087

Calved 3-20-14 Bull 43494586 Tattoo B4087

UPS DOMINO 3027 CL 1 DOMINO 9126J 1ET
 CX 3027 ADVANCE 1050 UPS MISS DIAMOND 1353
 43242410 MCR HARLANDS MARK 883 CJH HARLAND 408
 MCR MARK DOMINET 4125
 CHURCHILL NEON 7127T ET GH NEON 17N
 BB MS 7127 NEON 2081 CHURCHILL LADY 303
 43302553 BB MS 1065 DOMINO 5075 BB 9131 DOMINO 1065
 BB MS 4033 LAD 8308

Act BW	CED	BW	WW	YW	M	M&G	CEM
73	3.9	2.8	52	82	26	52	4.0
SC	FAT	RI	IMF	BMI	CEZ	BII	CHB
0.8	0.015	0.45	0.19	\$20	\$18	\$15	\$28

Adj WW 684 Ratio 101

110 BB EXCLUSIVE 4086

Calved 3-20-14 Bull 43494585 Tattoo B4086

UPS DOMINO 3027 L 1 DOMINO 9126J 1ET
 BB EXCLUSIVE 1026 UPS MISS DIAMOND 1353
 43216267 BB MS 013 SANDMAN 4231 TL 32F SANDMAN 013
 BB MS 7Z S LAD 8125
 OT HARLAND 945 CJH HARLAND 408
 BB MS 945 HARLAND 1087 OT MISS L1 DOM 405
 43208553 BB MS YANKEE 9032 CHURCHILL YANKEE ET
 BB MS124HHOMEBLDR 3207

Act BW	CED	BW	WW	YW	M	M&G	CEM
71	3.7	2.8	51	82	26	51	4.0
SC	FAT	RI	IMF	BMI	CEZ	BII	CHB
0.8	0.025	0.41	0.32	\$21	\$18	\$16	\$29

Adj WW 660 Ratio 99

Lot 115 Adj WW 626 Ratio

111 BB 1006 MARK CLASS 4098

Calved 3-25-14 Bull 43494598 Tattoo B4098

NX MARK CLASS 4411 BBH MARK DOMINO 918
 BB 4411 MARK CLASS 1006 ET NX MS CLASSIC 9011
 43218060 BB MS ADV 6001 1ET HH ADVANCE 185A
 BB MS MARK DOM 0253
 BB MARK DONALD 3007 BB MARK DONALD 386
 BB MS 3007 MARK DOAN LD 8046 BB MS M CLASSIC 8150
 43116954 BB MS M DONALD 3121 GVR MARK DON 933
 BB MS 5036 DOM 8176

Act BW	CED	BW	WW	YW	M	M&G	CEM
86	-0.9	4.7	39	62	19	39	-1.2
SC	FAT	RI	IMF	BMI	CEZ	BII	CHB
0.7	-0.039	0.24	0.00	\$15	\$13	\$16	\$19

Adj WW 642 Ratio

112 BB 994 DOMINO 4029

Calved 2-10-14 Bull 43480964 Tattoo B4029

CL 1 DOMINO 637S 1ET L1 DOMINO 03396
 CL 1 DOMINO 994W 1ET CL 1 DOMINETTE 118L
 42982456 CL 1 DOMINETTE 440P CL 1 DOMINO 9126J
 CL 1 DOMINETTE 974J
 BB 4209 MARK DOM 013 5 BB MARK DONALD 4209
 BB MS 0135 MARK DON 6155 BB MS ADV 6004 1ET
 42719646 BB MS 441 MARK DON 3037 SR PASSAGE 441
 BB MS 301 DOM 5190

Act BW	CED	BW	WW	YW	M	M&G	CEM
85	-1.7	5.4	43	77	24	45	-1.7
SC	FAT	RI	IMF	BMI	CEZ	BII	CHB
1.0	-0.002	0.20	0.02	\$15	\$12	\$15	\$19

Adj WW 739 Ratio 91

113 BB EXCLUSIVE 4091

Calved 3-22-14 Bull 43494591 Tattoo B4091

UPS DOMINO 3027 CL 1 DOMINO 9126J 1ET
 BB EXCLUSIVE 1026 UPS MISS DIAMOND 1353
 43216267 BB MS 013 SANDMAN 4231 TL 32F SANDMAN 013
 BB MS 7Z S LAD 8125
 SR SAGA 239W CJH HARLAND 408
 BB MS 239 SAGA 1016 SR ROSA 323
 43179775 BB MS MOUMENT 8050 MH MONUMENT 3147
 BB MS 8009 WASH 2178

Act BW	CED	BW	WW	YW	M	M&G	CEM
78	2.8	3.5	47	81	26	49	1.7
SC	FAT	RI	IMF	BMI	CEZ	BII	CHB
0.8	0.014	0.32	0.27	\$19	\$17	\$16	\$27

Adj WW 604 Ratio 91

114 BB 159 DOMINO 4097

Calved 3-25-14 Bull 43494597 Tattoo B4097

CL 1 DOMINO 993W CL 1 DOMINO 637S 1ET
 CL 1 DOMINO 159Y 1ET CL 1 DOMINETTE 5142R
 43216160 CL 1 DOMINETTE 6159S HH ADVANCE 3113N ET
 CL 1 DOMINETTE 4200P
 BB MARK DONALD 3007 BB MARK DONALD 386
 BB MS 3007 MARK DONA LD 9124 BB MS M CLASSIC 8150
 43117118 BB MS RC DOMINO 2017 RCH DOMINO 9005
 BB MS 4209 MARK DON 9314

Act BW	CED	BW	WW	YW	M	M&G	CEM
73	2.3	2.3	43	66	32	54	1.7
SC	FAT	RI	IMF	BMI	CEZ	BII	CHB
0.8	0.002	0.19	0.12	\$15	\$16	\$13	\$19

Act WW 660 Ratio

115 BB 159 DOMINO 4138

Calved 5-1-14 Bull 43512110 Tattoo B4138

CL 1 DOMINO 993W CL 1 DOMINO 637S 1ET
 CL 1 DOMINO 159Y 1ET CL 1 DOMINETTE 5142R
 43216160 CL 1 DOMINETTE 6159S HH ADVANCE 3113N ET
 CL 1 DOMINETTE 4200P
 CHURCHILL YANKEE ET GH NEON 17N
 BB MS YANKEE 1012 CHURCHILL LADY 202
 43193482 BB MS 1065 DOMINO 5075 BB 9131 DOMINO 1065
 BB MS 4033 LAD 8308

Act BW	CED	BW	WW	YW	M	M&G	CEM
79	1.8	2.9	50	79	31	56	2.7
SC	FAT	RI	IMF	BMI	CEZ	BII	CHB
0.5	0.011	0.24	0.15	\$14	\$15	\$10	\$25



116 HN RAFTSMAN 28X 1406
 Calved 2-26-14 Bull P43480760 Tattoo N1406

HARVIE RAFTSMAN 16R HARVIES LADIES MAN 4L
 BVR RAFTSMAN 028X ET HARVIE MS FIREFLY 51F
 P43154805 CIRCLE-D 832W WILMA 19F CIRCLE DWRANGLER832W
 TWIN J MISS STK 167R
 CL 1 DOMINO 9131J CL 1 DOMINO 5131E
 HN MS 9131J 637 CL 1 DOMINETTE 4148
 P42697225 HN MS 1082 FELT 420 RRR MR FELT 1082
 HN MS NEW IDEA N134

Act BW	CED	BW	WW	YW	M	M&G	CEM
81	1.2	4.5	49	87	18	43	-0.4
SC	FAT	RI	IMF	BMI	CEZ	BII	CHB
0.8	0.001	0.22	0.03	\$16	\$14	\$14	\$23

Act WW 911

I think this son Raftsman 028X is the best polled hereford bull we have ever raised. Raftsman 028X is a straight Canadian bred bull going back to the very popular Harvie bull on the top side of his pedigree and a Circle D cow on the bottom side. 028X sired calves being homozygous polled. This bull has 100% pigment and is perfect marked. He is without doubt the thickest squarest polled bull we have ever had on the ranch. Lots of bone, good feet on well placed legs. This bull weighed 911 actual at weaning. His dam has been a top producer every year and had a good bull in the sale last year. She is a daughter of our super, Cooper bull 9131J and then the grandma is a daughter of 1082 a 3008 granddaughter. He is a outcross for most polled cattle in the states and he is a good one. I think he would have been hard to beat in the show ring. Be sure to look at his video. This is really a powerful bull. He will weigh around a ton on sale day.

Lot 117-120 Here are 4 more Raftsman 028X that I bet you will have a hard time to tell apart. They are big, correct, dark colored with goggle eyes on all of them. We are proud to present these 1/2 and 3/4 brothers that all look alike. They will average very short of a ton a piece. You will drive the wheels off your pickup to find any like them. Hank Nelson says this is a set of bulls to be pound of. Raising them on the coast of Washington and having weaning weight like this with no creep feed just coast grass. This means they are good doers with a special sire and good dams. I hope you will appreciate this set of bulls.

117 HN RAFTSMAN 28X 1407
 Calved 2-27-14 Bull P43480761 Tattoo N1407

HARVIE RAFTSMAN 16R HARVIES LADIES MAN 4L
 BVR RAFTSMAN 028X ET HARVIE MS FIREFLY 51F
 P43154805 CIRCLE-D 832W WILMA 19F CIRCLE DWRANGLER832W
 TWIN J MISS STK 167R
 BB 3007 MARK DONALD 6089 BB MARK DONALD 3007
 HN MS MARK DONALD 6089 1014 BB MS 9131 DOMINO 3004
 P43090831 HN 637 ADVANCE 016 H5 9012 ADV 637 1ET
 BB MS NEW IDEA 8078

Act BW	CED	BW	WW	YW	M	M&G	CEM
79	-0.4	5.4	48	75	14	39	-0.3
SC	FAT	RI	IMF	BMI	CEZ	BII	CHB
0.5	-0.011	0.26	-0.07	\$14	\$13	\$12	\$20

Act WW 781



118 HN RAFTSMAN 28X 1404
 Calved 2-20-14 Bull P43509177 Tattoo N1404

HARVIE RAFTSMAN 16R HARVIES LADIES MAN 4L
 BVR RAFTSMAN 028X ET HARVIE MS FIREFLY 51F
 P43154805 CIRCLE-D 832W WILMA 19F CIRCLE DWRANGLER832W
 TWIN J MISS STK 167R
 RRR MS FELT 6059
 RRR MS FELT 5046
 BB NEW IDEA 7220
 JN MS LITE 07Z 14F

Act BW	CED	BW	WW	YW	M	M&G	CEM
72	1.4	2.7	36	67	12	31	0.5
SC	FAT	RI	IMF	BMI	CEZ	BII	CHB
0.9	-0.006	0.12	0.00	\$18	\$16	\$18	\$16

Act WW 754

119 HN RAFTSMAN 28X 1401
 Calved 2-8-14 Bull P43480756 Tattoo N140

HARVIE RAFTSMAN 16R HARVIES LADIES MAN 4L
 BVR RAFTSMAN 028X ET HARVIE MS FIREFLY 51F
 P43154805 CIRCLE-D 832W WILMA 19F CIRCLE DWRANGLER832W
 TWIN J MISS STK 167R
 RRR MS FELT 6059
 RRR MS FELT 5046
 H5 9012 ADV 637 1ET
 BB MS NEW IDEA 8078

Act BW	CED	BW	WW	YW	M	M&G	CEM
75	0.4	3.8	44	71	16	37	0.5
SC	FAT	RI	IMF	BMI	CEZ	BII	CHB
0.9	0.010	0.09	-0.03	\$17	\$15	\$16	\$17

Act WW 880

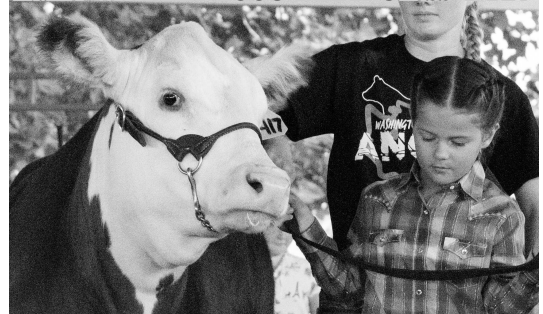
120 HN RAFTSMAN 28X 1421
 Calved 4-6-14 Bull P43509172 Tattoo N1421

HARVIE RAFTSMAN 16R HARVIES LADIES MAN 4L
 BVR RAFTSMAN 028X ET HARVIE MS FIREFLY 51F
 P43154805 CIRCLE-D 832W WILMA 19F CIRCLE DWRANGLER832W
 TWIN J MISS STK 167R
 BAR JZ TRADITION 434V
 GK MADAME EX A54
 WRHSR 82SCENTURION4Y
 BB MISS SELKIRK 7318

Act BW	CED	BW	WW	YW	M	M&G	CEM
68	1.1	3.3	44	63	15	37	0.4
SC	FAT	RI	IMF	BMI	CEZ	BII	CHB
0.4	-0.006	0.22	-0.05	\$14	\$15	\$13	\$18

Act WW 653

EMILY WITH HN 1006 MARK CLASS 1417





121 BB TEN X 5003

Calved 1-9-15 Bull 18153738 Tattoo 5003

MYTTY IN FOCUS
AAR TEN X 7008 SA
15719841 AAR LADY KELTON 5551

ANKONIAN WERNER WILDFIRE96
BB MS FIREFLY 8063
16357436 BB SCOTCH LASS 4078

SAF FOCUS OF ER
MYTTY COUNTESS 9006
SAV ADAPTOR 2213
HSAF LADY KELTON 504B
SAV 8180 TRAVELER 004
FSR ELBA DESIGN S406
NEW DESIGN OF PAR 3
BB SCOTCH LASS 2377

Act BW	CED	BW	WW	YW	M	CEM	
75	8	0.3	61	107	20	9	
\$EN	% IMF	RE	FAT	\$W	\$F	\$G	\$B
-15.41	.87	.50	.011	52.33	68.75	41.60	146.6

Adj WW 939 Ratio 112

We are starting the Angus sale with a full brother to last years top selling Angus bull that sold for \$11,000 for 1/2 interest. This calf is as good or better than his brother, he is definitely a herd bull prospect. He is sired by 10X and out of a Wildfire cow that just does not miss. As we said last year you will drive a long ways to find a better one. We will sell 3/4 interest and full possession.

122 BB TEN X 5011

Calved 2-7-15 Bull 18153727 Tattoo 5011

MYTTY IN FOCUS
AAR TEN X 7008 SA
15719841 AAR LADY KELTON 5551

LD PREDESTINED 714
BB MS CONNECTION 9061
16651403 PL MS CONNECTION P133

SAF FOCUS OF ER
MYTTY COUNTESS 9006
SAV ADAPTOR 2213
HSAF LADY KELTON 504B
GAR PREDESTINED
LD DIXIE ERICA 2053
SAF CONNECTION
BB LADY 9108

Act BW	CED	BW	WW	YW	M	CEM	
80	0.8	1.2	57	106	21	9	
\$EN	% IMF	RE	FAT	\$W	\$F	\$G	\$B
-16.44				45.41	69.79		

Adj WW 903 Ratio 100

Here is another 10X that is thick and deep. As far as I am concerned I believe 10X is the most consistent Angus bull in the country, working on everyone's cows. He sires top heifers and top bulls in every major sale in America. Continuous to lead or near the top in \$B. You can not go wrong with 10X. His dam is a very good Predestined granddaughter. Lots of carcass in this calf.



123 BB HIGH REGARD 5001

Calved 1-2-15 Bull 18134509 Tattoo 5001

GEIS BALOO 13'08
KG HIGH REGARD 2073
17399875 KG MS WIX 0680

BK EQUINOX 507
BB EILEEN 8033
16359778 BB EILEEN 5223

HF KODIAK 5R
KBJ QUEEN 461L
CONNEALY FULL FREIGHT
KG MS WIX 6854
ANKONIAN EQUINOX
B&K LASSIE 330
B/R FRONT RANGE 052
BB MS EILEEN 9033

Act BW	CED	BW	WW	YW	M	CEM	
72	11	0.1	46	82	22	11	
\$EN	% IMF	RE	FAT	\$W	\$F	\$G	\$B
-4.84	.21	.01	.028	42.20	33.72	14.25	66.70

Adj WW 823 Ratio 98

Here is one of the first calves by High Regard the \$70,000 bull from the KG sale in 2013. I was so impressed by his picture with no fitting that I bought some semen on him. He did not disappoint us as this is a very exceptional bull calf upstanding and straight made with outstanding feet and legs. His pedigree is pretty different from anything else around the country. He is an outcross bull that is very attractive.

Lot 124-128 Four of the next five calves are out of Thunderbird 2020 and one is a High Regard. We think this is a very attractive group of bulls that will qualify for first calf heifers, low birth weights from 71 to 79 pounds. The dams of these calves are all 1.9 and down on their birth weight EPD. The 5004 calf is out of a 10X heifer. The next 2 lots are out of J72 daughters a CC&7 son. These will make great yearling bulls to use on heifers and they are very attractive calves.

124 BB THUNDERBIRD 5004

Calved 1-11-15 Bull 18107412 Tattoo 5004

SAV THUNDERBIRD 9061
BB THUNDERBIRD 2020
17459693 BB MS BANDO 8165

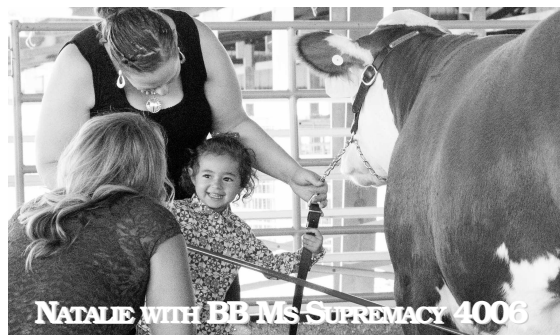
AAR TEN X 7008 SA
BB MS WINSOME 3003
17563502 BB MS WINSOME 1001

SAV FINAL ANSWER 0035
SAV EMBLYNETTE 7411
PL NAPOLEON R503
BB MS BANDO 1376
MYTTY IN FOCUS
AAR LADY KELTON 5551
B/R FRONT RANGE 052
MAR MS WINSOME 5115

Act BW	CED	BW	WW	YW	M	CEM	
79	5	1.9	58	100	22	8	
\$EN	% IMF	RE	FAT	\$W	\$F	\$G	\$B
-14.69				49.52	57.86		

Adj WW 920 Ratio 107





NATALIE WITH BB-MS SUPREMACY 4006

125 BB THUNDERBIRD 5009

Calved 1-26-15 Bull 18107385 Tattoo 5009

SAV THUNDERBIRD 9061 SAV FINAL ANSWER 0035
BB THUNDERBIRD 2020 SAV EMBLYNETTE 7411
17459693 BB MS BANDO 8165 PL NAPOLEON R503

HOOVER CC&7 J72
BB MS QUEEN 3021
17600524 BB 052 QUEEN 5229

BB MS BANDO 1376
SYDGEN CC&7
MS BLACKCAP ELLSTON G278
B/R FRONT RANGE 052
BB MS KRUGERRAND 543

Act BW	CED	BW	WW	YW	M	CEM	
71	9	0.0	52	92	23	10	
\$EN	% IMF	RE	FAT	\$W	\$F	\$G	\$B
-11.9				48.57	47.47		

Adj WW 905 Ratio 105

126 BB THUNDERBIRD 5005

Calved 1-13-15 Bull 18107383 Tattoo 5005

SAV THUNDERBIRD 9061 SAV FINAL ANSWER 0035
BB THUNDERBIRD 2020 SAV EMBLYNETTE 7411
17459693 BB MS BANDO 8165 PL NAPOLEON R503

HOOVER CC&7 J72
BB MS ROSETTA 3012
17510768 PL ROSETTA T936

BB MS BANDO 1376
SYDGEN CC&7
MS BLACKCAP ELLSTON G278
BR MIDLAND
HF ROSETTA EASY 315E

Act BW	CED	BW	WW	YW	M	CEM	
71	4	2.3	49	88	16	8	
\$EN	% IMF	RE	FAT	\$W	\$F	\$G	\$B
1.35				32.15	42.35		

Adj WW 848 Ratio 98

127 BB HIGH REGARD 5012

Calved 1-13-15 Bull Pending Tattoo 5012

GEIS BALOO 13'08
KG HIGH REGARD 2073
17399875 KG MS WIX 0680

BB EQUINOX 507
BB BLACKBIRD 0007
16807681 LD BLACKBIRD 5304

HF KODIAK 5R
KBJ QUEEN 461L
CONNELLY FULL FREIGHT
KG MS WIX 6854
ANKONIAN EQUINOX
B& K LASSIE 330
WCC SPECIAL DSGN L309
LD BLACKBIRD 3104

Act BW	CED	BW	WW	YW	M	CEM	
73							
\$EN	% IMF	RE	FAT	\$W	\$F	\$G	\$B

Adj WW 781 Ratio 93

128 BB THUNDERBIRD 5006

Calved 1-14-15 Bull 18107384 Tattoo 5006

SAV THUNDERBIRD 9061 SAV FINAL ANSWER 0035
BB THUNDERBIRD 2020 SAV EMBLYNETTE 7411
17459693 BB MS BANDO 8165 PL NAPOLEON R503

PL NEW DESIGN 9001
BB MS QUEEN 2029
17554514 PL MS QUEEN T972

BB MS BANDO 1376
B/R NEW DESIGN 036
THREETREES BLACKCAP 3671
GAR PREDESTINED
PL MISS 338 RIGHT TIME P415

Act BW	CED	BW	WW	YW	M	CEM	
75	6	1.4	41	77	16	9	
\$EN	% IMF	RE	FAT	\$W	\$F	\$G	\$B
7.28				27.06	28.34		

Adj WW 773 Ratio 90

Lot 129-136 Here are eight calves that came from my brothers Doug and Don. The boys used my Jac's Ranch bull Jacs Missing Link 9938 better known as Apple Jacks here, a really super Missing Link son out of the top Jac's donor cow. The boys used him to clean up their cows after they Aled them. As would happen he would get his share of the good cows, no exception here. Doug's favorite cow had a bull 425 and Don's favorite cow had a bull 423. As you would guess they know their cows pretty well and they ended up with 2 of the best bulls for the year and they are really good.

129 OCR UPWARD 425

Calved 10-14-14 Bull 18157127 Tattoo 425

OCC MISSING LINK 830M OCC HEADLINER 661H
JACS MISSING LINK 9938 OCC DIXIE ERICA 946K
16818737 JACS PEG 4308 PINECREEKTRAVELER1241107

SITZ UPWARD 307R LHR PEG 1051
CONNEALY ONWARD
OCR PRECIOUS 023 SITZ HENRIETTA PRIDE 81M
16679911 OCR FOREVER LADY B4645 SAV 8180 TRAVELER 004

PLS F019 ROSE K627

Act BW	CED	BW	WW	YW	M	CEM	
78	4	1.9	56	97	29	7	
\$EN	% IMF	RE	FAT	\$W	\$F	\$G	\$B
-24.62	.48	.47	.047	54.49	53.76	23.84	140.6

Adj WW 810 Ratio 107

425, what a bull. He had a 810 pound adjusted weaning weight and a 1750 pound yearling weight at 433 days of age. He has 104 ratio for IMF and 105 ratio for REA. This bull is thick, deep and well balanced from end to end. He has a gorgeous Upward 307R dam that is out of a super 004 cow. This is a bull with a really popular pedigree. 9938 his sire has sired really good daughters with super udders. His bulls are meaty and well balanced with low birth weight. They are all heifer bulls. 425 is a definite herd bull prospect. You call Doug and see what he tells you about his dam, she is the best Angus cow he knows of and he thinks this bull is very good.

130 OCR RETURN 423

Calved 10-10-14 Bull 18157118 Tattoo 423

OCC MISSING LINK 830M OCC HEADLINER 661H
JACS MISSING LINK 9938 OCC DIXIE ERICA 946K
16818737 JACS PEG 4308 PINECREEKTRAVELER1241107

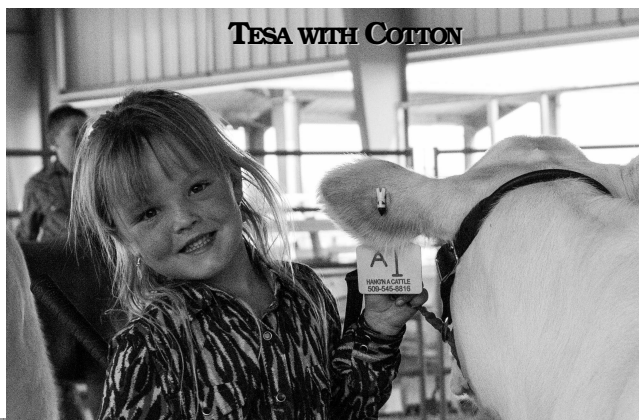
SAV NET WORTH 4200 SAV 8180 TRAVELER 004
OCR PRIDE 010 SAV MAY 2410
16679906 OCR PRIDE B618 HYLINE RIGHT TIME 338

OCC MS TRAVELER B111

Act BW	CED	BW	WW	YW	M	CEM	
78	4	2.1	55	93	26	6	
\$EN	% IMF	RE	FAT	\$W	\$F	\$G	\$B
-17.37	.45	.57	.023	51.42	47.18	27.96	136.2

Adj WW 837 Ratio 111

Now we go to Don's favorite bull who had 837 adjusted weaning weight and 1760 pound 437 day of age actual weight. Don's cow is a really nice looking Net Worth 4200 cow. I think it's just a matter of opinion which is the best cow. They picked the one they liked best as heifers and they have not changed their mind. These two bulls are both very good. This bull is slightly bigger and not quite as pretty looking. They are both herd bull prospects.



TESA WITH COTTON

**KAINE AND KENDRA WITH THE
CHAMPION AND RESERVE BULL**



131 OCR DESIGN 418
Calved 9-27-14 Bull 18157173 Tattoo 418

OCC MISSING LINK 830M OCC HEADLINER 661H
JACS MISSING LINK 9938 OCC DIXIE ERICA 946K
16818737 JACS PEG 4308 PINECREEKTRAVELER1241107
LHR PEG 1051
OCR PRIDE 910 GAR NEW DESIGN 5050
OCR DESIGN MISS 065 OCR INTEGRITY MISS B594
16982287 OCR MS NEW DESIGN B911 BON VIEW NEW DESIGN 1407
OCC MS TRAVELER B102

Act BW	CED	BW	WW	YW	M	CEM	
75	9	-0.4	46	78	26	9	
\$EN	% IMF	RE	FAT	\$W	\$F	\$G	\$B
-9.24				49.20	26.70		

Adj WW 806 Ratio 107

132 OCR GAME DAY 421
Calved 10-8-14 Bull 18157128 Tattoo 421

OCC MISSING LINK 830M OCC HEADLINER 661H
JACS MISSING LINK 9938 OCC DIXIE ERICA 946K
16818737 JACS PEG 4308 PINECREEKTRAVELER1241107
LHR PEG 1051
GDAR GAME DAY 449 BOYD NEW DAY 8005
OCR FOREVER LADY 030 GDAR MS WIX 474
16958915 OCR PRICE 8135 BT CROSSOVER 758N
PLS F019 ROSE K627

Act BW	CED	BW	WW	YW	M	CEM	
73	8	0.6	42	77	21	8	
\$EN	% IMF	RE	FAT	\$W	\$F	\$G	\$B
-5.56	.46	.69	.039	35.87	27.66	31.87	90.81

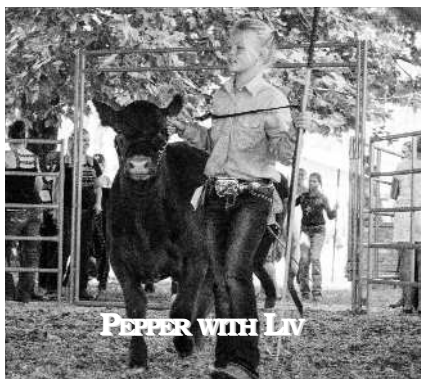
Adj WW 726 Ratio 105

133 OCR DESIGN 427
Calved 11-5-14 Bull 18157133 Tattoo 427

OCC MISSING LINK 830M OCC HEADLINER 661H
JACS MISSING LINK 9938 OCC DIXIE ERICA 946K
16818737 JACS PEG 4308 PINECREEKTRAVELER1241107
LHR PEG 1051
OCR PRIDE 910 GAR NEW DESIGN 5050
OCR PRIDE 125 OCR INTEGRITY MISS B594
17218964 OCR CONANGA 014 SITZ UPWARD 307R
OCR FRONTRANGE MISS B526

Act BW	CED	BW	WW	YW	M	CEM	
77	4	1.7	52	89	28	6	
\$EN	% IMF	RE	FAT	\$W	\$F	\$G	\$B
-18.53	.59	.48	.043	51.68	42.05	31.22	117.6

Adj WW 824



134 OCR GAME DAY 422
Calved 10-8-14 Bull 18157129 Tattoo 422

OCC MISSING LINK 830M OCC HEADLINER 661H
JACS MISSING LINK 9938 OCC DIXIE ERICA 946K
16818737 JACS PEG 4308 PINECREEKTRAVELER1241107
LHR PEG 1051
GDAR GAME DAY 449 BOYD NEW DAY 8005
OCR FOREVER LADY 032 GDAR MS WIX 474
16958898 OCR DESIGN MISS 7115 IRONWOOD NEW LEVEL
OCR FUTURE MISS B584

Act BW	CED	BW	WW	YW	M	CEM	
75	6	2.1	44	78	24	7	
\$EN	% IMF	RE	FAT	\$W	\$F	\$G	\$B
-5.94	.27	.76	.045	40.96	28.05	24.90	74.39

Adj WW 744 Ratio 99

135 OCR DESIGN 428
Calved 11-7-14 Bull 18157132 Tattoo 428

OCC MISSING LINK 830M OCC HEADLINER 661H
JACS MISSING LINK 9938 OCC DIXIE ERICA 946K
16818737 JACS PEG 4308 PINECREEKTRAVELER1241107
LHR PEG 1051
OCR PRIDE 910 GAR NEW DESIGN 5050
OCR RITA 119 OCR INTEGRITY MISS B594
17219032 OCC 12C3 RITA B235 ALBERDA TRAVELER 416
LARKS MS 1B2 12C3

Act BW	CED	BW	WW	YW	M	CEM	
78	4	1.7	48	82	24	5	
\$EN	% IMF	RE	FAT	\$W	\$F	\$G	\$B
-8.09	.36	.59	.016	44.57	32.36	28.77	93.01

Adj WW 805 Ratio 109

136 OCR UPWARD 426
Calved 11-2-14 Bull 18157135 Tattoo 426

OCC MISSING LINK 830M OCC HEADLINER 661H
JACS MISSING LINK 9938 OCC DIXIE ERICA 946K
16818737 JACS PEG 4308 PINECREEKTRAVELER1241107
LHR PEG 1051
OCR UPWARD 03 SITZ UPWARD 307R
OCR MS PRIDE 219 OCR MS NEW DESIGN B511
17530047 OCR TRINA 020 SITZ UPWARD 307R
GRANTS BLACKCAP TIPSYP 186

Act BW	CED	BW	WW	YW	M	CEM	
76	4	2.3	42	80	23	7	
\$EN	% IMF	RE	FAT	\$W	\$F	\$G	\$B
-5.39	.42	.54	.031	31.80	32.93	27.21	114.8

Adj WW 698 Ratio 92

137 BB 9001 NEW DESIGN 4049
Calved 11-20-14 Bull 18049158 Tattoo 4049

B/R NEW DESIGN 036 VDAR NEW TREND 315
PL NEW DESIGN 9001 B/R BLACKCAP EMPRESS 76
16981744 THREETREES BLACKCAP 3671 GAR GRID MAKER
GAR LUCYS BOY 2118
SITZ TRAVELER 8180 GDAR TRAVELER 71
BB BLACKCAP 1010 SITZEVERELDAENTENSE37
16953449 PL BLACKCAP T944 SUMMERCREST HI PRIME29
NER ICC BLACKCAP SF 0192

Act BW	CED	BW	WW	YW	M	CEM	
70	6	1.3	39	74	22	11	
\$EN	% IMF	RE	FAT	\$W	\$F	\$G	\$B
-0.56	.66	.25	.002	31.96	24.46	38.65	78.32

Adj WW 910 Ratio 100

This is the only winter Angus bull calf we have in the sale. At 70 pounds he is a real good prospect for a heifer bull. He is sired by 9001 out of an outstanding 8180 daughter.

Lot 138-142 This is a fantastic set of coming two year old bulls. There is an exceptional 9938 to start this group he has a 70 pound birth weight and should be a great heifer bull. A big, thick 10X bull is lot 139, he is a real good, moderate framed range bull with good EPDs, BW 1.2. The lot 140 bull 4014 is an ET bull that we bought embryos from Jac's Ranch goes back to 616 on the top through 2536, all time top Angus cow and a Gardener Prime Time on the bottom. This bull recorded ultra sound adjusted IMF of 6.38 and 13.8 adjusted RE. That is one of the highest marbling scores we have ever had. The other 2 bulls in this group are really good well made 9938 bulls with 74 and 75 pound birth weight they will make great heifer bulls ready to breed lots of heifers.

138 BB MISSING LINK 4005
Calved 1-23-14 Bull 178140281 Tattoo 4005

OCC MISSING LINK 830M OCC HEADLINER 661H
JACS MISSING LINK 9938 OCC DIXIE ERICA 946K
16818737 JACS PEG 4308 PINECREKTRAVELER124-1107
LHR PEG 1051
SYDGEN CC & 7 SAF CONNECTION
BB PRINCESS 1020 SYDGENFORVERLADY4087
17564369 BB PRINCESS 905 BB 004 TRAVELER 7049
BB PRINCESS 3190

Act BW	CED	BW	WW	YW	M	CEM	
83	2	2.0	44	77	22	4	
SEN	% IMF	RE	FAT	\$W	\$F	\$G	\$B
-2.16	.30	.43	.00	33.47	27.66	24.59	107.2

Adj WW 916 Ratio 98

139 BB TEN X 4007
Calved 2-9-14 Bull 17822276 Tattoo 4007

MYTTY IN FOCUS SAF FOCUS OF ER
AAR TEN X 7008 SA MYTTY COUNTESS 906
15719841 AAR LADY KELTON 5551 SAV ADAPTOR 2213
HSAF LADY KELTON 504B
BR MIDLAND TWIN VALLEY PRECISION E161
PL ROSETTA T936 BR ROYAL LASS 7036-19
16063929 HF ROSETTA EASY 315E GAR SLEEP EASY 1009
ROSETTA 131 OF MC CUMBER

Act BW	CED	BW	WW	YW	M	CEM	
82	8	1.1	46	91	13	9	
SEN	% IMF	RE	FAT	\$W	\$F	\$G	\$B
4.7	.91	.39	0	25.27	49.88	44.40	122.6

Adj WW 864 Ratio 92

140 BB 111 RITO 4014
Calved 3-3-14 Bull 17861392 Tattoo 4014

RITO 616 OF 4B20 6807 DHD TRAVELER 6807
RITO 111 OF 2536 RITO 616 RITA 4B20 OF 0FB1 BANDO
13793825 GAR PRECISION 2536 G A R PRECISION 1680
G A R EXT 2104
N BAR PRIME TIME D806 GARDENS PRIME TIME
JACS TOREBY QUEEN 6262 N BAR MISS EMULOUS A404
15390018 JACS TOREBY QUEEN 0315 PINECREEKTRAVLER1241107
JACS TOREBY QUEEN 5539

Act BW	CED	BW	WW	YW	M	CEM	
82	1	3.1	45	82	22	8	
SEN	% IMF	RE	FAT	\$W	\$F	\$G	\$B
-4.56	.87	.27	.027	32.29	39.17	37.59	132.4

Adj WW 885 Ratio 100

141 BB MISSING LINK 4016
Calved 3-5-14 Bull 17820712 Tattoo 4016

OCC MISSING LINK 830M OCC HEADLINER 661H
JACS MISSING LINK 9938 OCC DIXIE ERICA 946K
16818737 JACS PEG 4308 PINECREKTRAVELER124-1107
LHR PEG 1051
BC 7022 RAVEN 7965 BC MARATHON 7022
BB BLACKBIRD 1013 OCC BLACKBIRD 796F
16952460 LD BLACKBIRD 5304 WCC SPECIAL DESIGN L309
LD BLACKBIRD 3104

Act BW	CED	BW	WW	YW	M	CEM	
74	5	1.3	45	79	19	7	
SEN	% IMF	RE	FAT	\$W	\$F	\$G	\$B
1.55	.40	.48	.019	36.72	29.13	27.91	103.7

Adj WW 870 Ratio 97

142 BB MISSING LINK 4027
Calved 3-26-14 Bull 17895193 Tattoo 4027

OCC MISSING LINK 830M OCC HEADLINER 661H
JACS MISSING LINK 9938 OCC DIXIE ERICA 946K
16818737 JACS PEG 4308 PINECREKTRAVELER124-1107
LHR PEG 1051
WCC SPECIAL DESIGN L309 BON VIEW NEW DESIGN 878
LD BLACKBIRD 5304 N BAR PRIMROSE 2424
15094638 LD BLACKBIRD 3104 BON VIEW BANDO 598
LD BLACKBIRD DB 1404

Act BW	CED	BW	WW	YW	M	CEM	
75	5	0.9	49	83	22	8	
SEN	% IMF	RE	FAT	\$W	\$F	\$G	\$B
-5.38	.41	.21	.036	45.59	33.44	21.83	107.3

Adj WW 901 Ratio 100

Lot 143-154 These are fancy coming 2 year old bulls that should impress anyone. The Lot 148 bull is a bull Dr. Jon Beaver from Illinois bred and he is really a good bull that will be a complete outcross. This is just an out standing set of bulls ready to do a lot of work. You will want to look them over.

143 BB MISSING LINK 4029
Calved 4-1-14 Bull 17903346 Tattoo 4029

OCC MISSING LINK 830M OCC HEADLINER 661H
JACS MISSING LINK 9938 OCC DIXIE ERICA 946K
16818737 JACS PEG 4308 PINECREKTRAVELER124-
1107 LHR PEG 1051
BR MIDLAND TWINVALLEY PRECISION E161
PL ROSETTA T939 BR ROYAL LASS 7036-19
16063982 H F ROSETTA EASY 315E GAR SLEEP EASY 1009
ROSETTA 131 OF MCCUMBER

Act BW	CED	BW	WW	YW	M	CEM	
74	4	2.0	42	72	19	6	
SEN	% IMF	RE	FAT	\$W	\$F	\$G	\$B
5.27	.47	.30	.020	32.88	19.00	30.35	79.00

Adj WW 740 Ratio 107

144 BB MISSING LINK 4036
Calved 4-16-14 Bull 17903352 Tattoo 4036

OCC MISSING LINK 830M OCC HEADLINER 661H
JACS MISSING LINK 9938 OCC DIXIE ERICA 946K
16818737 JACS PEG 4308 PINECREKTRAVELER124-1107
LHR PEG 1051
B/RFUTURE DIRECTION6295 B/R FUTURE DIRECTION 330
BB LASS 9015 B/R MCHENRY BLACKCAP474
16651411 BB LASS 5166 NEW DESIGN OF PAR 3
BB LASS 3047

Act BW	CED	BW	WW	YW	M	CEM	
73	3	1.7	39	66	14	6	
SEN	% IMF	RE	FAT	\$W	\$F	\$G	\$B
16.15				25.95	10.76		

Adj WW 688 Ratio 99

145 BB O'REILLY FACTOR 4028
Calved 3-29-14 Bull 17861178 Tattoo 4028

S A V FINAL ANSWER 0035 SITZ TRAVELER 8180
VIN-MAR O'REILLY FACTOR SAV EMULOUS 8145
16400429 VIN-MAR EDELLA 2827 CIRCLE A 216 LTD 9374
RR EDELLA PURSUIT 5827
BB EQUINOX 8114 ANKONIAN EQUINOX
BB LADY 9043 BB MS ERICA 5014
16700429 BB LADY 5212 YA INTRIGUE 716
DONAMERE LADY 1402

Act BW	CED	BW	WW	YW	M	CEM	
77	4	1.7	51	94	26	7	
SEN	% IMF	RE	FAT	\$W	\$F	\$G	\$B
-17.92	.34	.06	.031	45.29	51.82	21.47	64.34

Adj WW 752 Ratio 108

146 BB MISSING LINK 4034

Calved 4-5-14 Bull 17903350 Tattoo 4034

OCC MISSING LINK 830M OCC HEADLINER 661H
 JACS MISSING LINK 9938 OCC DIXIE ERICA 946K
 16818737 JACS PEG 4308 PINECREEKTRAVELER1241107
 LHR PEG 1051
 B/R FRONT RANGE 052 B/R NEW DESIGN 036
 BB 052 QUEEN 5229 WHITE FENCE PRIDE H1
 15395128 BB MS KRUGERRAND 543 KRUGERANDOFDON-

Act BW	CED	BW	WW	YW	M	CEM
69	6	0.5	46	79	25	8
\$EN	% IMF	RE	FAT	\$W	\$F	\$G
-8.12	.39	.46	.011	46.18	28.45	28.61 97.26

Adj WW 825 Ratio 119

147 BB MISSING LINK 4038

Calved 5-2-14 Bull 17903353 Tattoo 4038

OCC MISSING LINK 830M OCC HEADLINER 661H
 JACS MISSING LINK 9938 OCC DIXIE ERICA 946K
 16818737 JACS PEG 4308 PINECREEKTRAVELER1241107
 LHR PEG 1051
 B/R FRONT RANGE 052 B/R NEW DESIGN 036
 BB MS QUEEN 102 WHITE FENCE PRIDE H1
 16991203 BB MS KRUGERRAND 543 KRUGERANDOFDONAMERE490

Act BW	CED	BW	WW	YW	M	CEM
70	4	1.7	35	66	21	7
\$EN	% IMF	RE	FAT	\$W	\$F	\$G
5.26				26.83	13.38	

Adj WW 672 Ratio 97

148 BVR PRIME CUT 435B

Calved 4-10-14 Bull 18027194 Tattoo 435B

BASIN PRIME CUT 354K SUMMITCRESTPRIMECUT1G42
 BVR PRIME CUT 215Z BASIN HEIRESS 353
 18021463 REMITALL KEEP SAKE 143L SITZ ALLIANCE 6595
 REMITALL KEEP SAKE 103J
 SAV 004 CAPACITY 5234 SAV 8180 TRAVELER 004
 LADY OF PEAK DOT 705W SAV ERICA 1141
 17408333 LADY OF PEAK DOT 468S STEVENSON BRUNO 6371
 LADY OF PEAK DOT 731L

Act BW	CED	BW	WW	YW	M	CEM
80	4	3.0	43	72	26	8
\$EN	% IMF	RE	FAT	\$W	\$F	\$G
-6.05				38.20	18.33	

Adj WW 693 Ratio

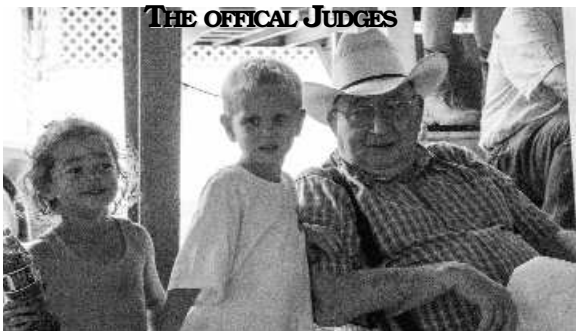
149 BB THUNDERBIRD 4039

Calved 5-10-14 Bull 17903355 Tattoo 4039

SAV THUNDERBIRD 9061 SAV FINAL ANSWER 0035
 BB THUNDERBIRD 2020 SAV EMBLYNETTE 7411
 17459693 BB MS BANDO 8165 PL NAPOLEON R503
 BB MS BANDO 1376
 JACS MISSING LINK 9938 OCC MISSING LINK 830M
 BB LASS 2027 JACS PEG 4308
 17283531 BB LASS 9015 B/RFRUTURE DIRCTION 6295
 BB LASS 5166 KRUGERANDOFDONAMERE490
 DONAMERE QUEEN 901

Act BW	CED	BW	WW	YW	M	CEM
67	5	1.6	46	79	13	8
\$EN	% IMF	RE	FAT	\$W	\$F	\$G
10.77				30.63	28.45	

Adj WW 766 Ratio 100



Lot 154 Adj WW 598 Ratio 86

150 BB THUNDERBIRD 4009

Calved 2-15-14 Bull 17814030 Tattoo 4009

SAV THUNDERBIRD 9061 SAV FINAL ANSWER 0035
 BB THUNDERBIRD 2020 SAV EMBLYNETTE 7411
 17459693 BB MS BANDO 8165 PL NAPOLEON R503
 BB MS BANDO 1376
 JACS MISSING LINK 9938 OCC MISSING LINK 830M
 BB ROSETTA 2012 JACS PEG 4308
 17283523 PL ROSETTA T936 BR MIDLAND
 H F ROSETTA EASY 315E

Act BW	CED	BW	WW	YW	M	CEM
74	5	2.0	33	64	11	8
\$EN	% IMF	RE	FAT	\$W	\$F	\$G
21.67				11.41	11.31	

Adj WW 661 Ratio 82

151 BB MISSING LINK 4026

Calved 3-24-14 Bull 17820716 Tattoo 4026

OCC MISSING LINK 830M OCC HEADLINER 661H
 JACS MISSING LINK 9938 OCC DIXIE ERICA 946K
 16818737 JACS PEG 4308 PINECREEKTRAVELER1241107
 LHR PEG 1051
 PL NAPOLEON R503 BALDRIDGE NAPOLEON N73
 BB MS BANDO 8165 LLF 583 GRIDMAKER 1119
 16357439 BB MS BARDO 1376 ANKONIAN EQUINOX
 DONAMERE BARDO 1501

Act BW	CED	BW	WW	YW	M	CEM
70	6	1.1	41	68	16	7
\$EN	% IMF	RE	FAT	\$W	\$F	\$G
12.05				32.36	12.83	

Adj WW 663 Ratio 96

152 SH BULLET 1401

Calved 4-8-14 Bull 17848765 Tattoo 1401

OCC MISSING LINK 830M OCC HEADLINER 661H
 JACS MISSING LINK 9938 OCC DIXIE ERICA 946K
 16818737 JACS PEG 4308 PINECREEKTRAVELER1241107
 LHR PEG 1051
 FCR FORESIGHT 8130 WOODHILL FORESIGHT
 FCR MS FORESIGHT 1586 FCR MS 1407 DESIGN 2006
 17034806 FCR MS NEW DESIGN 795 FCR NEW DESIGN 2007
 DCR MS NEW TREND 5107

Act BW	CED	BW	WW	YW	M	CEM
75	5	1.0	46	78	22	7
\$EN	% IMF	RE	FAT	\$W	\$F	\$G
-2.7				42.80	26.70	

Act WW 560 Ratio

153 BB MISSING LINK 4037

Calved 4-25-14 Bull 17903358 Tattoo 4037

OCC MISSING LINK 830M OCC HEADLINER 661H
 JACS MISSING LINK 9938 OCC DIXIE ERICA 946K
 16818737 JACS PEG 4308 PINECREEKTRAVELER1241107
 LHR PEG 1051
 B/R FRONT RANGE 052 B/R NEW DESIGN 036
 BB 052 QUEEN 5228 WHITE FENCE PRIDE H1
 15395127 BB MS KRUGERRAND 543 KRUGERANDOFDONAMERE490
 DONAMERE QUEEN 901

Act BW	CED	BW	WW	YW	M	CEM
68	6	0.8	35	66	20	8
\$EN	% IMF	RE	FAT	\$W	\$F	\$G
6.85				27.78	13.38	

Adj WW 660 Ratio 95

154 BB MISSING LINK 4041

Calved 5-24-14 Bull 17903359 Tattoo 4041

OCC MISSING LINK 830M OCC HEADLINER 661H
 JACS MISSING LINK 9938 OCC DIXIE ERICA 946K
 16818737 JACS PEG 4308 PINECREEKTRAVELER1241107
 LHR PEG 1051
 PL EXT T873 N BAR EMULATION EXT
 BB MS BEYONCE 0016 GAR AMBUSH 915
 16651409 BB MS KRUGERRAND 6116 RITZVILLES BVDESIGN 409
 C BAR U DESIGNS 4563

Act BW	CED	BW	WW	YW	M	CEM
66	6	0.8	36	63	19	9
\$EN	% IMF	RE	FAT	\$W	\$F	\$G
10				30.03	7.67	

This was a favorite of our dear friend Grandpa Les Gilmore from Calgary, Alberta. We lost him this last year and he will be greatly missed.

EVERYTHING I NEEDED TO KNOW IN LIFE, I LEARNED FROM A HEREFORD BULL



ALWAYS TAKE A MOMENT TO LIE DOWN, BREATHE THE AIR AND CHEW GRASS. SOONER OR LATER SOMEONE WILL COME ALONG AND MAKE YOU MOVE TO ANOTHER PASTURE.



ON BRANDING DAY BE BIGGER, STRONGER AND TOUGHER LOOKING THAN ANYONE ELSE . . . OTHERWISE THEY MIGHT CASTRATE YOU.



SOMETIMES YOU HAVE TO BE IMMOVABLE. STAND YOUR GROUND NO MATTER WHO TWISTS YOUR TAIL OR PRODS YOU.



KEEP YOUR HORNS SHARPENED. BE PREPARED TO BUTT HEADS. NOT EVERYONE UNDERSTANDS THAT YOU'RE THE BOSS OF YOUR OWN LIFE.



FLIES AND OTHER NUISANCES THAT LAND ON YOUR BACK ARE YOUR PROBLEM. NO ONE WILL FLICK YOUR TAIL FOR YOU.



IT'S GOOD TO ROLL IN THE DIRT. HAVE FUN WHILE YOU DO IT.



DON'T LET ANYTHING STAND IN THE WAY OF YOUR DREAMS. IF YOU SEE A BEAUTIFUL COW OR GREENER GRASS IN ANOTHER PASTURE...GO RIGHT THROUGH THAT FENCE.



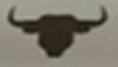
MONOGAMY IS OVERRATED.



DON'T LOOK LIKE HAMBURGER. SOMEONE MIGHT DECIDE TO GRIND YOU.



YOUR PEDIGREE MATTERS. IT'S IMPORTANT TO KNOW WHAT STOCK YOU CAME FROM.



DON'T FORGET YOUR VOICE. HOW ELSE WILL THE COWS HEAR YOUR SWEET MATING CALL OR YOUR COMPETITION KNOW



YOU MEAN BUSINESS? KNOW HOW TO WHISPER AND HOW TO ROAR.

COUNT YOUR BLESSINGS. YOU HAVE FOOD. YOU HAVE UDDERLY WONDERFUL COMPANIONS, AN OPEN SKY AND SHELTER. WHAT ELSE IS THERE?





Cattle Co.

Box 36 Connell, WA 99326

Bill Bennett & Family

(509)234-4361 Cell (509)551-6102

Joe Cell (509)551-6104

Leslie Cell (509)551-6622

Jay Cell (509)551-6101

bccattle@bossq.com

www.bccattle.com

First Class

