



BB 239 Saga 3081



BB Advantage 3143



BB 159 Domino 3159



BB Ms Advantage 4120
BB Ms 1050 Advance 4012



BB Missing Link 3049

BT Cattle Co.

ANNUAL PRODUCTION SALE

November 21, 2015 • 11 AM

**Mid-Tex Livestock Auction
Navasota, Texas**

Call or email for sale catalog

SELLING

- 66 Hereford Bulls • 19 Angus Bulls
- 2 F1 Braford Bulls • 8 Charolais Bulls
- 40 Bred & Open Hereford Heifers

*Guest consignor Bayvue Farms
selling 8 Charolais bulls*



BB 1018 Domino 3126



MC Doc Duke Polled 43B



3841 FM 2782 • Nacogdoches, Texas
Terry Tolbert (936) 371-9218
Joe Bennett (509) 551-6104
btcattleco@gmail.com

Bayvue Farms

2482 Fowler Road • Herman, Missouri
(573) 694-2697

www.bayvuefarms.com • bayvuefarms@gmail.com

BT Cattle Co

Production Sale

Saturday, November 21, 2015

Sale Begins @ 11:00 am

Mid-Tex Livestock Auction Navasota, Texas

Auctioneer: Rick Machado

Cell Phone.....805-501-3210

Sale Representatives

Jim BannerSouthern Livestock(210)867-6862

EC LarkinGulf Coast Cattlemen(210)240-7938

Jack ChastainTexas Hereford(817)831-3161

Phil Stoll.....Weekly Livestock Reporter..(817)366-7332

Airlines

To College Station: Most major airlines

To Houston: All National airlines

Motels

Navasota

Comfort Inn & Suites.....(936) 825-9464

Best Western Inn.....(936) 870-4100

Super 8(936) 825-7775

College Station 20 Miles, has a number of excellent ones

SALE DAY PHONE NUMBER:

Joe Bennett.....(509)551-6104

Terry Tolbert.....(936)371-9218

Steve Swanson.....(573)694-2697

John Atkinson.....(979)482-2018

Mid Tex Livestock Auction.....(936)825-3970

Terms and Conditions

Terms of the sale are cash only. All cattle are to be paid for during or immediately after the sale and will not be released until after settlement has been made.

Herd Health

Health certificate and brand clearances will be available. All cattle will meet requirements for immediate interstate shipment. All bulls will be fertility and Trich tested within 30 days of the sale. All heifers have been pregnancy tested.

Breeding Guarantee

Bulls sold in this sale are fertility tested and are guaranteed by the owners to be breeders, provided they are properly handled and cared for by the purchaser. Bulls failing to breed after a trial of six months may be returned to the seller if they are in good condition. If the bull proves a non-breeder, the bull will be replaced, or credit will be issued for the next year's sale. Seller is not liable for bulls lost due to injury or death.

Announcements

All announcements made from the auction block on sale day will take precedence over statements in the catalog or other advertising. We reserve the right to withdraw any sale lot not meeting our specification prior to sale time.

Liability

All persons who attend the sale do at their own risk. Neither the owners, Mid Tex Livestock Auction, nor any other persons connected with the sale assume liability, legal or otherwise, for accidents or loss of property.

Absentee Bids

If anyone wishes to bid and cannot attend the sale we would accept phone bids. Your bids will be handled as directed by you and in your best interest.

WELCOME

We are very excited with the bulls and heifers we are offering in our second production sale. We have a great set of Hereford and Angus Bulls, they are big, stout, good footed bulls that are ready to go out and work for you. The Hereford heifers are a fancy set of females that will be a great addition to any herd.

This year we have Bayvue Farms from Herman, Missouri as a guest consigner with some really good Charolais bulls.

Bulls and heifers will be available to view at Mid Tex Livestock Auction from Thursday November 19th thru Saturday November 21nd.

Thank you for your interest in our program. We look forward to seeing you on sale day.

Sincerely,
BT Cattle Co
Terry Tolbert and Family
Joe Bennett and Family

HEREFORD BULLS

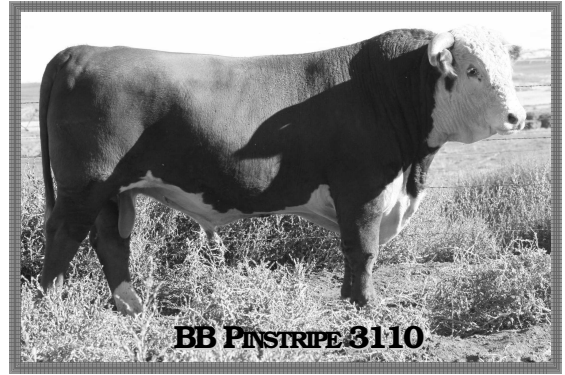


BB 239 SAGA 3081

1 BB 239 SAGA 3081
 Calved 3-28-2013 Bull 43390213 Tattoo B3081

CJH HARLAND 408 SR SAGA 239W 43017219 SR ROSA 323
 CHURCHILL NEON 7127T ET BB MS 7127 NEON 0027 43128154 BB MS 4209 MARK DON 2170
 HH ADVANCE 9005J CJH L1 DOMINETTE 0064 CTY BONANZA 01K SR SABRINA 982
 GH NEON 17N CHURCHILL LADY 303 BB MARK DONALD 4209 BB MS RED STAN 6041

Act BW	CED	BW	WW	YW	M	M&G	CEM
80	0.7	3.7	49	79	22	46	2.7
SC	FAT	RI	IMF	BMI	CEZ	BII	CHB
0.8	-0.017	0.50	-0.07	\$17	\$15	\$14	\$22

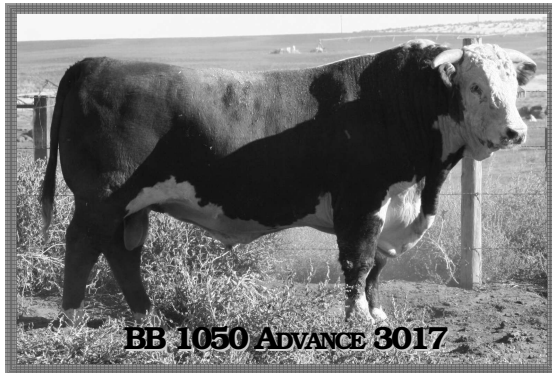


BB PINSTRIPE 3110

4 BB PINSTRIPE 3110
 Calved 4-25-2013 Bull 43402181 Tattoo B3110

CHURCHILL YANKEE ET CHURCHILL PINSTRIPE 9124W ET 42992946 CHURCHILL LADY 404
 GVR MARK DON 933 BB MS 933 MARK DON 1078 42173811 BB MS L1 DOMINO 2084
 GH NEON 17N CHURCHILL LADY 202 CL 1 DOMINO 9126J 1ET CHURCHILL LADY 1192 MHR L1 MARK DON 35T STARLITE 504 BB L1 DOM 5376 1ET BB MISS DOMINO 5158

Act BW	CED	BW	WW	YW	M	M&G	CEM
82	0.0	3.3	49	80	25	49	1.3
SC	FAT	RI	IMF	BMI	CEZ	BII	CHB
0.4	-0.027	0.46	0.17	\$15	\$13	\$12	\$27



BB 1050 ADVANCE 3017

2 BB 1050 ADVANCE 3017
 Calved 2-24-2013 Bull 43400029 Tattoo B3017

UPS DOMINO 3027 CX 3027 ADVANCE 1050 43242410 MCR MARKETTE 883ET
 OT HARLAND 945 BB MS 945 HARLAND 1062 43198605 BB MS MARK DONALD 9041
 CL 1 DOMINO 9126J 1ET UPS MISS DIAMOND 1353 CJH HARLAND 408 MCR MARK DOMINET 4125 CJH HARLAND 408 OT MISS L1 DOM 405 BB MARK DONALD 3007 BB MS 32F SANDMAN 0028

Act BW	CED	BW	WW	YW	M	M&G	CEM
81	3.9	3.0	51	75	31	56	3.4
SC	FAT	RI	IMF	BMI	CEZ	BII	CHB
0.9	0.031	0.26	-0.04	\$16	\$18	\$13	\$20

3 BB 239 SAGA 3029
 Calved 3-7-2013 Bull 43390024 Tattoo B3029

CJH HARLAND 408 SR SAGA 239W 43017219 SR ROSA 323
 BB 9131 DOMINO 1065 BB MS 1065 DOMINO 4015 42470913 BB MS 4290 MARK DON 1077
 HH ADVANCE 9005J CJH L1 DOMINETTE 0064 CTY BONANZA 01K SR SABRINA 982
 CL 1 DOMINO 9131J BB MS 32 SANDMAN9149 BB MARK DONALD 4209 BB MS 4177 6191
 CL 1 DOMINO 9126J UPS DOMINO 3027 42426386 UPS MISS DIAMOND 1353
 NX MARK DONALD 6007 R/J MS MARK 1036 43186205 MDA MS MARK 2055 ET

Act BW	CED	BW	WW	YW	M	M&G	CEM
80	1.4	3.3	48	82	20	44	2.5
SC	FAT	RI	IMF	BMI	CEZ	BII	CHB
0.8	-0.005	0.39	-0.02	\$17	\$16	\$14	\$22



BB 159 DOMINO 3159

5 BB 159 DOMINO 3159
 Calved 6-23-2013 Bull 43426928 Tattoo B3159

CL 1 DOMINO 993W CL 1 DOMINO 637 1ET CL 1 DOMINETTE 5142R CL 1 DOMINO 159Y 1 ET 43216160 CL 1 DOMINETTE 6159S
 BB 5097 DOMINO 7052 BB MS 7052 DOMINO 0113 43128283 BB MS 5132 MARK DON 8031
 CL 1 DOMINO 637 1ET CL 1 DOMINETTE 5142R HH ADVANCE 3113N 1ET CL 1 DOMINETTE 4200P BB 1083 DOMINO 5097 BB MS 1065 DOMINO 5014 BB 3007 MARK DON 5132 BB MS 3162 CLASSIC 5205

Act BW	CED	BW	WW	YW	M	M&G	CEM
73	1.9	2.3	47	68	30	53	1.6
SC	FAT	RI	IMF	BMI	CEZ	BII	CHB
0.8	0.010	0.21	0.04	\$15	\$16	\$13	\$20

6 BB 3027 DOMINO 3505
 Calved 2-19-2013 Bull Unregistered Tattoo 3505

CL 1 DOMINO 9126J HH ADVANCE 767G 1 ET CL 1 DOMINETTE 490 SH DIAMOND 881 UPS MS MILEHIGH 8330 OXH MARK DOMINO 0125 NX MS MARK ARTHUR 2411 BB MARK DONALD 386 SGJ MARKETTE 9623

Act BW	CED	BW	WW	YW	M	M&G	CEM
75							
SC	FAT	RI	IMF	BMI	CEZ	BII	CHB

HEREFORD BULLS

7 BB PINSTRIPE 3119

Calved 5-6-2013 Bull 43412107 Tattoo B3119

CHURCHILL YANKEE ET
CHURCHILL PINSTRIPE 9124W ET
42992946 CHURCHILL LADY 404

MH MONUMENT 3147
BB MS 3147 MONUMENT 6067
42718141 BB MS 9015 SANDMAN 2262

GH NEON 17N
CHURCHILL LADY 202
CL 1 DOMINO 9126J 1ET
CHURCHILL LADY 1192
MH DAKOTA 0230
MH MISS PATRIOT 971
BB 32F SANDMAN 9015
BB MS 804 DOM 5209

Act BW	CED	BW	WW	YW	M	M&G	CEM
81	0.2	3.5	52	89	21	47	-0.8
SC	FAT	RI	IMF	BMI	CEZ	BII	CHB
0.4	0.011	0.38	0.24	\$14	\$13	\$11	\$28



8 BB ADVANTAGE 3143

Calved 5-19-2013 Bull 43412403 Tattoo B3143

CHURCHILL NEON 626S
BB 626 ADVANTAGE 1059
43198754 BB MS 4033 LAD 5065

BB 9131 DOMINO 1083
BB MS 1083 DOMINO 9085
43117214 BB MS3007 MARK DON6228
BBMS124H HOME BLDR3241

GH NEON 17N
CHURCHILL LADY 346
BB 7Z STD LAD 4033
BB MS 32F SANDMAN 0033
CL 1 DOMINO 9131J
BB MS4209 MARK DON9130
BB MARK DONALD 3007

Act BW	CED	BW	WW	YW	M	M&G	CEM
70	1.6	2.4	47	82	25	48	2.1
SC	FAT	RI	IMF	BMI	CEZ	BII	CHB
0.6	-0.007	0.49	0.02	\$15	\$15	\$12	\$23

9 BB PINSTRIPE 3133

Calved 5-8-2013 Bull 43412160 Tattoo B3133

CHURCHILL YANKEE ET
CHURCHILL PINSTRIPE 9124W ET
42992946 CHURCHILL LADY 404

BB 9131 DOMINO 1065
BB MS 1065 DOMINO 7029
42854843 BB MS0135MARK DOM 3320

GH NEON 17N
CHURCHILL LADY 202
CL 1 DOMINO 9126J 1E T
CHURCHILL LADY 1192
CL 1 DOMINO 9131J
BB MS 32F SANDMAN 9149
BB 4209 MARK DOM 0135
BB MS KERNEL 2007

Act BW	CED	BW	WW	YW	M	M&G	CEM
80	0.4	4.5	60	97	25	55	1.6
SC	FAT	RI	IMF	BMI	CEZ	BII	CHB
0.5	0.009	0.38	0.20	\$15	\$13	\$10	\$31

10 BB 1018 DOMINO 3122

Calved 5-6-2013 Bull 43412125 Tattoo B3122

UPS DOMINO 3027
BB 3027 DOMINO 1018
43193486 BB MS MONUMENT 6007

CL 1 DOMINO 9131J
BB MS 9131 DOMINO 5162
42601163 BB MS M DONALD 3121

CL 1 DOMINO 9126J 1ET
UPS MISS DIAMOND 1353
MH MONUMENT 3147
BB MS 32F SANDMAN 0028
CL 1 DOMINO 5131E
CL 1 DOMINETTE 4148
GVR MARK DON 993
BB MS 5036 DOM 8176

Act BW	CED	BW	WW	YW	M	M&G	CEM
81	2.3	4.3	45	86	24	47	0.3
SC	FAT	RI	IMF	BMI	CEZ	BII	CHB
0.7	-0.001	0.27	0.11	\$15	\$15	\$12	\$24

11 BB 1018 DOMINO 3123

Calved 5-6-2013 Bull 43412126 Tattoo B3123

UPS DOMINO 3027
BB 3027 DOMINO 1018
43193486 BB MS MONUMENT 6007

CL 1 DOMINO 9131J
BB MS 9131 DOMINO 7203
42924705 BB MS HOMEBLDR 2102

CL 1 DOMINO 9126J 1ET
UPS MISS DIAMOND 1353
MH MONUMENT 3147
BB MS 32F SANDMAN0028
CL 1 DOMINO 5131E
CL 1 MONINETTE 4148
BP HOME BUILDER 124H
BB MS 32F SANDMAN9081

Act BW	CED	BW	WW	YW	M	M&G	CEM
74	3.3	3.8	54	92	27	54	1.3
SC	FAT	RI	IMF	BMI	CEZ	BII	CHB
0.7	0.011	0.33	0.17	\$16	\$16	\$12	\$28

12 BB ADVANTAGE 3142

Calved 5-17-2013 Bull unregistered Tattoo B3142

CHURCHILL NEON 626S
BB 626 ADVANTAGE 1059
43198754 BB MS 4033 LAD 5065

BB MARK DONALD 3007
BB MS 3007 MARK DONALD 9090
43117215 BB MS 9131 DOMINO 3062

GH NEON 17N
CHURCHILL LADY 346
BB 7Z STD LAD 4033
BB MS 32F SANDMAN 0033
BB MARK DONALD 386
BB MS M CLASSIC 8150
CL 1 DOMINO 9131J
BB MS 32F SANDMAN 1057

Act BW	CED	BW	WW	YW	M	M&G	CEM
73							
SC	FAT	RI	IMF	BMI	CEZ	BII	CHB



13 BB 1018 DOMINO 3126

Calved 5-7-2013 Bull 43412131 Tattoo B3126

UPS DOMINO 3027
BB 3027 DOMINO 1018
43193486 BB MS MONUMENT 6007

CHURCHILL NEON 626S
BB MS 626S NEON 8111
43116717 BB MS RC DOMINO 4053

CL 1 DOMINO 9126J 1ET
UPS MISS DIAMOND 1353
MH MONUMENT 3147
BB MS 32F SANDMAN 0028
GH NEON 17N
CHURCHILL LADY 346
RCH DOMINO 9005
BB CHURCH PATROL1061

Act BW	CED	BW	WW	YW	M	M&G	CEM
78	3.0	3.6	48	94	26	50	1.8
SC	FAT	RI	IMF	BMI	CEZ	BII	CHB
0.6	-0.015	0.39	0.10	\$15	\$16	\$11	\$27

14 BB 1018 DOMINO 3118

Calved 5-6-2013 Bull 43412105 Tattoo B3118

UPS DOMINO 3027
BB 3027 DOMINO 1018
43193486 BB MS MONUMENT 6007

CL 1 DOMINO 285M
BB MS 285M DOMINO 6053
42684621 BB MS DONANZA 4109

CL 1 DOMINO 9126J 1ET
UPS MISS DIAMOND 1353
MH MONUMENT 3147
BB MS 32F SANDMAN 0028
CL 1 DOMINO 9126J 1ET
CL 1 DOMINETTE 8184H
CTY DONANZA 01K
BB MS 32F SANDMAN 1055

Act BW	CED	BW	WW	YW	M	M&G	CEM
82	2.0	4.3	55	92	23	51	0.9
SC	FAT	RI	IMF	BMI	CEZ	BII	CHB
0.8	-0.009	0.35	0.08	\$17	\$15	\$14	\$28

HEREFORD BULLS

15 BB EXCLUSIVE 3154

Calved 6-10-2013 Bull 43417714 Tattoo B3154

UPS DOMINO 3027
BB EXCLUSIVE 1026
43216267 BB MS 013 SANDMAN 4231

BJ L1 DOMINO 2637
BB MS 2637 BJ DOMINO 0055
43128212 BB MS 9131 DOMINO 7203

CL 1 DOMINO 9126J 1ET
UPS MISS DIAMOND 1353
TL 32F SANDMAN 013
BB MS 7Z S LAD 8125
XP L1 DOMINO 01050
BJ L1 DOMINETTE 2069
CL 1 DOMINO 9131J
BB MS HOME BLDR2102

Act BW	CED	BW	WW	YW	M	M&G	CEM
72	3.3	2.7	47	74	25	48	2.1
SC	FAT	RI	IMF	BMI	CEZ	BII	CHB
0.9	0.026	0.28	0.35	\$21	\$18	\$18	\$27

16 BB 1018 DOMINO 3146

Calved 5-24-2013 Bull 43412405 Tattoo B3146

UPS DOMINO 3027
BB 3027 DOMINO 1018
43193486 BB MS MONUMENT 6007

BB 7Z STD LAD 4033
BB MS 4033 LAD 5113
42601067 BB MS HI TECH 3247

CL 1 DOMINO 9126J 1ET
UPS MISS DIAMOND 1353
MH MONUMENT 3147
BB MS 32F SANDMAN 0028
COMMANDER STD LAD 7Z
BB MS L1 DOMINO 9490
BB HI TECH 8205 1ET
BB MS L1 DOM 0104

Act BW	CED	BW	WW	YW	M	M&G	CEM
75	2.1	4.0	44	85	20	42	1.8
SC	FAT	RI	IMF	BMI	CEZ	BII	CHB
0.7	-0.021	0.24	-0.01	\$15	\$16	\$13	\$22

17 BB 1018 DOMINO 3153

Calved 6-9-2013 Bull 43417713 Tattoo B3153

UPS DOMINO 3027
BB 3027 DOMINO 1018
43193486 BB MS MONUMENT 6007

CL 1 DOMINO 9131J
BB MS 9131 DOMINO 4265
42582476 BB MS PATRIOT 6023

CL 1 DOMINO 9126J 1ET
UPS MISS DIAMOND 1353
MH MONUMENT 3147
BB MS 32F SANDMAN 0028
CL 1 DOMINO 5131E
CL 1 DOMINETTE 4148
BB PATRIOT 0293
BB MS 9410 DOM 2052

Act BW	CED	BW	WW	YW	M	M&G	CEM
72	3.7	2.7	47	77	28	52	0.6
SC	FAT	RI	IMF	BMI	CEZ	BII	CHB
0.6	0.005	0.24	0.12	\$15	\$16	\$12	\$24

18 BB 1018 DOMINO 3128

Calved 5-7-2013 Bull 43412135 Tattoo B3128

UPS DOMINO 3027
BB 3027 DOMINO 1018
43193486 BB MS MONUMENT 6007

BB 9131 DOMINO 1065
BB MS 1065 DOMINO 6150 ET
42719945 BB MS M CLASSIC 8150

CL 1 DOMINO 9126J 1ET
UPS MISS DIAMOND 1353
MH MONUMENT 3147
BB MS 32F SANDMAN 0028
CL 1 DOMINO 9131J
BB MS 32F SANDMAN 9149
NX MARK CLASS 4411
BB MS DOM 3001 1ET

Act BW	CED	BW	WW	YW	M	M&G	CEM
79	2.9	3.8	54	93	26	53	1.2
OSC	FAT	RI	IMF	BMI	CEZ	BII	CHB
0.7	-0.005	0.44	0.05	\$16	\$16	\$11	\$27

19 BB 1018 DOMINO 3138

Calved 5-11-2013 Bull 43412382 Tattoo B3138

UPS DOMINO 3027
BB 3027 DOMINO 1018
43193486 BB MS MONUMENT 6007

BB 9131 DOMINO 1065
BB MS 1065 DOMINO 7126
42822862 BB MS LIBERTY 7206

CL 1 DOMINO 9126J 1ET
UPS MISS DIAMOND 1353
MH MONUMENT 3147
BB MS 32F SANDMAN 0028
CL 1 DOMINO 9131J
BB MS 32F SANDMAN 9149
BB PATRIOT 3025
BB MISS DOMINO 3190

Act BW	CED	BW	WW	YW	M	M&G	CEM
73	2.5	3.6	54	91	27	54	1.0
SC	FAT	RI	IMF	BMI	CEZ	BII	CHB
0.7	0.006	0.40	0.10	\$16	\$15	\$12	\$27

20 BB PINSTRIPE 3157

Calved 6-17-2013 Bull 43417717 Tattoo B3157

CHURCHILL YANKEE ET
CHURCHILL PINSTRIPE 9124W ET
42992946 CHURCHILL LADY 404

BB MARK DONALD 3007
BB MS 3007 MARK DONA LD 7063
43021959 BB MS WASH 8101

GH NEON 17N
CHURCHILL LADY 202
CL 1 DOMINO 9126J 1ET
CHURCHILL LADY 1192
BB MARK DONALD 386
BB MS M CLASSIC 8150
BB WASHINGTON 2041
BB MS HI TECH 3247

Act BW	CED	BW	WW	YW	M	M&G	CEM
74	1.8	2.6	44	77	26	48	2.0
SC	FAT	RI	IMF	BMI	CEZ	BII	CHB
0.6	-0.025	0.36	0.11	\$16	\$16	\$13	\$24

21 BB 159 DOMINO 3121

Calved 5-6-2013 Bull 43412124 Tattoo B3121

CL 1 DOMINO 993W
CL 1 DOMINO 159Y 1ET
43216160 CL 1 DOMINETTE 6129S

CHURCHILL NEON 7127T ET
BB MS 7127 NEON 0106
43128275 BB MS 767G ADVANCE 6077

CL 1 DOMINO 637S 1ET
CL 1 DOMINETTE 5142R
HH ADVANCE 3113N 1ET
CL 1 DOMINETTE 4200
GH NEON 17N
CHURCHILL LADY 303
HH ADVANCE 767G 1ET
BB MS 4033 LAD 4063

Act BW	CED	BW	WW	YW	M	M&G	CEM
80	1.9	3.6	51	79	31	56	2.4
SC	FAT	RI	IMF	BMI	CEZ	BII	CHB
0.8	0.010	0.28	0.01	\$15	\$16	\$12	\$22

22 BB 1018 DOMINO 3108

Calved 4-24-2013 Bull 43402179 Tattoo B3108

UPS DOMINO 3027
BB 3027 DOMINO 1018
43193486 BB MS MONUMENT 6007

BP HOME BUILDER 124H
BB MS 124H HOME BLDR 3207
42415061 BB MISS KERNEL 1496

CL 1 DOMINO 9126J 1ET
UPS MISS DIAMOND 1353
MH MONUMENT 3147
BB MS 32F SANDMAN 0028
HH HOME BUILDER
GH COSMO LASS 69E
BB KERNEL 8100
BB MS HI TECH 9296

Act BW	CED	BW	WW	YW	M	M&G	CEM
85	1.0	4.6	46	83	27	50	1.3
SC	FAT	RI	IMF	BMI	CEZ	BII	CHB
0.6	-0.005	0.21	0.03	\$13	\$14	\$10	\$22

23 BB 3027 DOMINO 3097

Calved 4-14-2013 Bull 43402168 Tattoo B3097

CL 1 DOMINO 9126J 1ET
UPS DOMINO 3027
42426386 UPS MISS DIAMOND 1353

BB 9131 DOMINO 1065
BB MS 1065 DOMINO 5097
42601052 BB MS WASH 8085

HH ADVANCE 767G 1ET
CL 1 DOMINETTE 490
SH DIAMOND 881
UPS MS MILEHIGH 8330
CL 1 DOMINO 9131
BB MS 32F SANDMAN 9149
BB WASHINGTON 2041
BB MS PATRIOT 5121

Act BW	CED	BW	WW	YW	M	M&G	CEM
80	6.4	1.9	48	78	28	52	4.3
C	FAT	RI	IMF	BMI	CEZ	BII	CHB
0.7	0.001	0.34	0.17	\$19	\$20	\$14	\$27

24 BB H201 BIG ARTHUR 3085

Calved 4-2-2013 Bull 43401840 Tattoo B3085

MARK ARTHUR 775
SR BIG ARTHUR H201
16118098 MISS MARK DOMINO 767

NX MARK CLASS 4411
BB MS M CLASSIC 8150
41034696 BB MS DOM 3001 1ET

TT MCK ARTHUR 405
SB MISS MARK 88
MARK DONALD B0112
PRINCESS DOMINO 544
BBH MARK DOMINO 918
NX MS CLASSIC 9011
BB L1 DOM 9410 4ET
BB MS DOM 8013 1ET

Act BW	CED	BW	WW	YW	M	M&G	CEM
85	0.1	1.7	29	42	24	38	-1.2
SC	FAT	RI	IMF	BMI	CEZ	BII	CHB
0.7	-0.003	0.17	-0.09	\$13	\$14	\$15	\$9

HEREFORD BULLS

25 BB PINSTRIPE 3150

Calved 6-4-2013 Bull 43426923 Tattoo B3150

CHURCHILL YANKEE ET
CHURCHILL PINSTRIPE 9124W ET
42992946 CHURCHILL LADY 404

MH MONUMENT 3147
BB MS 3147 MONUMENT 7051
43021946 BB MS 9131 DOMINO 3137

GH NEON 17N
CHURCHILL LADY 202
CL 1 DOMINO 9126J 1ET
CHURCHILL LADY 1192
MH DAKOTA 0230
MH MISS PATRIOT 971
CL 1 DOMINO 9131J
BB MS 32F SANDMAN 1001

Act BW	CED	BW	WW	YW	M	M&G	CEM
74	1.5	2.6	44	77	23	45	-0.4
SC	FAT	RI	IMF	BMI	CEZ	BII	CHB
0.2	0.011	0.24	0.20	\$12	\$14	\$9	\$24

26 BB 1015 HARLAND 3067

Calved 3-23-2013 Bull 43390075 Tattoo B3067

CJH HARLAND 408
BB HARLAND 1015
43189197 BB MS 626S NEON 9020

BB H201 BIG ARTHUR 8180
BB MS 8180 BIG ARTHUR 1071
43208536 BB MS 3147 MONUMENT 7013

HH ADVANCE 9005J
CJH L1 DOMINETTE 0064
CHURCHILL NEON 626S
BB MS 285M DOMINO 6102
SR BIG ARTHUR H201
BB MS M CLASSIC 8150
MH MONUMENT 3147
BB MS 124H H BULD 3216

Act BW	CED	BW	WW	YW	M	M&G	CEM
77	1.4	3.0	50	87	25	50	0.8
SC	FAT	RI	IMF	BMI	CEZ	BII	CHB
0.9	0.000	0.39	0.14	\$18	\$15	\$15	\$26

27 BB PINSTRIPE 3069

Calved 3-23-2013 Bull 43390076 Tattoo B3069

CHURCHILL YANKEE ET
CHURCHILL PINSTRIPE 9124W ET
42992946 CHURCHILL LADY 404

BB MARK DONALD 3007
BB MS 3007 MARK DONALD 6043
42684257 BB MS 013 SANDMAN 2263

GH NEON 17N
CHURCHILL LADY 202
CL 1 DOMINO 9126J 1ET
CHURCHILL LADY 1192
BB MARK DONALD 386
BB MS M CLASSIC 8150
TL 32F SANDMAN 013
BB MS 1476 STAN 7224

Act BW	CED	BW	WW	YW	M	M&G	CEM
81	1.4	2.9	43	74	27	48	1.5
SC	FAT	RI	IMF	BMI	CEZ	BII	CHB
0.5	-0.019	0.31	0.18	\$15	\$15	\$12	\$24

28 BB 1018 DOMINO 3131

Calved 5-7-2013 Bull 43412138 Tattoo B3131

UPS DOMINO 3027
BB 3027 DOMINO 1018
43193486 BB MS MONUMENT 6007

BB 7Z STD LAD 4033
BB MS 4033 LAD 4022
42470925 BB MS 32F SANDMAN 0004

CL 1 DOMINO 9126J 1ET
UPS MISS DIAMOND 1353
MH MONUMENT 3147
BB MS 32F SANDMAN 0028
COMMARNDER STD LAD7Z
BB MS L1 DOMINO 9490
BP 146D SANDMAN 32F
BB MS SELKIRK 1287

Act BW	CED	BW	WW	YW	M	M&G	CEM
75	2.6	3.9	50	81	21	46	2.3
SC	FAT	RI	IMF	BMI	CEZ	BII	CHB
0.6	-0.017	0.45	-0.04	\$16	\$16	\$12	\$24

29 BB 1018 DOMINO 3124

Calved 5-6-2013 Bull 43412127 Tattoo B3124

UPS DOMINO 3027
BB 3027 DOMINO 1018
43193486 BB MS MONUMENT 6007

CL 1 DOMINO 9131J
BB MS 9131 DOMINO 7203
42924705 BB MS 124H HBLDR 2102

CL 1 DOMINO 9126J 1ET
UPS MISS DIAMOND 1353
MH MONUMENT 3147
BB MS 32F SANDMAN 0028
CL 1 DOMINO 5131E
CL 1 DOMINETTE 4148
BP HOME BUILDER 124H
BB MS 32F SANDMAN 9081

Act BW	CED	BW	WW	YW	M	M&G	CEM
73	3.4	3.3	45	81	27	50	1.4
SC	FAT	RI	IMF	BMI	CEZ	BII	CHB
0.6	0.006	0.22	0.16	\$15	\$16	\$12	\$24

30 BB 1081 ROCK SOLD 3149

Calved 6-2-2013 Bull 43417711 Tattoo B3149

CHURCHILL NEON 7127T ET
BB 7127 ROCK SOLID 1081
43198792 BB MS YANKEE 8012

CL 1 DOMINO 9131J
BB MS 9131 DOMINO 7200
42924703 BB MS 6149 CLASSIC 3271

GH NEON 17N
CHURCHILL LADY 303
CHURCHILL YANKEE ET
BB MS ADV 5353 1ET
CL 1 DOMINO 5131E
CL 1 DOMINETTE 4148
BB MARK CLASSIC 6149
BB MS 9013Y ADV 9136

Act BW	CED	BW	WW	YW	M	M&G	CEM
75	1.6	3.0	43	69	21	43	1.5
SC	FAT	RI	IMF	BMI	CEZ	BII	CHB
0.4	-0.001	0.16	0.12	\$14	\$15	\$12	\$21

31 BB PINSTRIPE 3148

Calved 5-27-2013 Bull 43412408 Tattoo B3148

CHURCHILL YANKEE ET
CHURCHILL PINSTRIPE 9124W ET
42992946 CHURCHILL LADY 404

BB MARK DONALD 3007
BB MS 3007 MARK DONALD 6228
42762513 BB MS 124H H BLDR 3241

GH NEON 17N
CHURCHILL LADY 202
CL 1 DOMINO 9126J 1ET
CHURCHILL LADY 1192
BB MARK DONALD 386
BB MS M CLASSIC 8150
BP HOME BUILDER 124H
BB MS M PLAN 6284

Act BW	CED	BW	WW	YW	M	M&G	CEM
74	1.5	3.0	52	85	25	51	1.6
SC	FAT	RI	IMF	BMI	CEZ	BII	CHB
0.7	-0.002	0.40	0.18	\$17	\$15	\$14	\$28

32 BB 3007 MARK DONALD 3180

Calved 12-9-2013 Bull 43450949 Tattoo B3180

BB MARK DONALD 386
BB MARK DONALD 3007
42364214 BB MS M CLASSIC 8150

BB 9131 DOMINO 1065
BB MS 1065 DOMINO 7049
43021943 BB MS M DONALD 3121

BB MARK DONALD 549
LADY SELKIRK J770
NX MARK CLASS 4411
BB MS DOM 3001 IET
CL 1 DOMINO 9131J
BB MS 32F SANDMAN 9149
GVR MARK DON 933
BB MS 5036 DOM 8176

Act BW	CED	BW	WW	YW	M	M&G	CEM
72	0.4	4.1	48	78	27	51	0.0
SC	FAT	RI	IMF	BMI	CEZ	BII	CHB
0.8	-0.039	0.45	0.12	\$17	\$14	\$15	\$27

33 BB 1050 ADVANCE 3182

Calved 12-10-2013 Bull 43450951 Tattoo B3182

UPS DOMINO 3027
CX 3027 ADVANCE 1050
43242410 MCR HARLAND MARKETE 883

BB 5097 DOMINO 7052
MS 7052 DOMINO 1115
43218933 BB MS 1083 DOMINO 5040

CL 1 DOMINO 9126J 1ET
UPS MISS DIAMOND 1353
CJH HARLAND 408
MCR MARK DOMINET 4125
BB 1083 DOMINO 5097 BB
BB MS 1065 DOMINO 5014
BB 9131 DOMINO 1083
BB MS 013 SANDMAN 2263

Act BW	CED	BW	WW	YW	M	M&G	CEM
70	4.6	1.1	39	49	29	48	3.1
SC	FAT	RI	IMF	BMI	CEZ	BII	CHB
0.7	0.000	0.18	0.25	\$20	\$20	\$18	\$22

34 BB 1001 SUPREMACY 4027

Calved 2-8-2014 Bull 43480962 Tattoo B4027

PHR MARK BUSHMAN 4
BB SUPREMACY 1001 ET
43187073 BB MS MARK 5100

CHURCHILL NEON 626S
BB MS 626 NEON 1070
43208535 BB MS 4209 MARK DON 2170

COURT BUSHMAN 17R
HH MISS MARK A1
SR BIG ARTHUR H201
BB MS M CLASSIC 8150
GH NEON 17N
CHURCHILL LADY 346
BB MARK DONALD 4209
BB MS RED STAN 6041

Act BW	CED	BW	WW	YW	M	M&G	CEM
85	-1.7	4.7	43	69	19	41	0.1
SC	FAT	RI	IMF	BMI	CEZ	BII	CHB
0.5	-0.027	0.35	-0.19	\$11	\$12	\$11	\$16

HEREFORD BULLS

35 BB SUPREMACY 4037

Calved 2-15-2014 Bull 43480971 Tattoo B4037

PHR MARK BUSHMAN 4 COURT BUSHMAN 17R
 BB SUPREMACY 1001 ET HH MISS MARK A1
 43187073 BB MS MARK 5100 SR BIG ARTHUR H201
 CHURCHILL LADY 7127T ET BB MS M CLASSIC 8150
 BB MS 7127 NEON 1032 GH NEON 17N
 43198555 BB MS 626S NEON 8009 CHURCHILL LADY 303
 CHURCHILL NEON 626S
 BB MS 4033 LAD 4022

Act BW	CED	BW	WW	YW	M	M&G	CEM
82	-0.2	4.3	38	62	17	36	1.4
SC	FAT	RI	IMF	BMI	CEZ	BII	CHB
0.5	-0.038	0.36	-0.11	\$14	\$14	\$14	\$16

36 BB SURPEMACY 4014

Calved 2-17-2014 Bull 43472247 Tattoo B4014

PHR MARK BUSHMAN 4 COURT BUSHMAN 17R
 BB SUPREMACY 1001 ET HH MISS MARK A1
 43187073 BB MS MARK 5100 SR BIG ARTHUR H201
 CX 4011 ADVANCE 0802 C 212 DOMINO 4011 ET
 BB MS 802 ADVANCE 0163 CX MISS 233 ADVANCE 0530
 43171620 BB MS 1065 DOMINO 8163 BB 9131 DOMINO 1065
 BB MS 6149 CLASSIC 1204

Act BW	CED	BW	WW	YW	M	M&G	CEM
84	0.5	4.0	38	55	20	39	-0.2
SC	FAT	RI	IMF	BMI	CEZ	BII	CHB
0.6	-0.005	0.10	-0.03	\$14	\$14	\$14	\$15

37 BB 1003 MARK CLASS 4007

Calved 1-8-2014 Bull 43472159 Tattoo B4007

NX MARK CLASS 4411 BBH MARK DOMINO 918
 BB 4411 MARK CLASS 1003 ET NX MS CLASSIC 9011
 43218057 BB MS ADV 6001 1ET HH ADVANCE 185A
 CHURCHILL NEON 626S BB MS MARK DOM 0253
 BB MS 6626 NEON 0025 GH NEON 17N
 43128140 BB MS LANDMARK 2156 CHURCHILL LADY 346
 BP LANDMARK 126H
 BB MS WASH 8007

Act BW	CED	BW	WW	YW	M	M&G	CEM
82	0.2	3.1	38	57	22	41	0.5
SC	FAT	RI	IMF	BMI	CEZ	BII	CHB
0.5	-0.021	0.07	0.04	\$14	\$14	\$14	\$17

38 BT 8053 YANKEE 3274

Calved 11-15-2013 Bull 43628110 Tattoo 3274

CHURCHILL YANKEE ET GH NEON 17N
 BB YANKEE 8053 CHURCHILL LADY 202
 43113977 BB MS 9131 DOMINO 3004 CL 1 DOMINO 9131J
 BB MS 32F SANDMAN 0293
 CX ADVANCE 112 H5 500 ADVANCE 897
 BB MS 112 ADVANCE 9091 CX MS MARK DOM 548
 43140141 BB MS 8148 MARK DOM 5122 PPF MARK DOMINO 8148
 BB MS 5036 DOM 8176

Act BW	CED	BW	WW	YW	M	M&G	CEM
76	0.3	4.2	52	80	20	46	1.9
SC	FAT	RI	IMF	BMI	CEZ	BII	CHB
0.6	0.018	0.36	0.23	\$17	\$14	\$14	\$27

39 BT 0011 NEON 3223

Calved 10-20-2013 Bull 43628085 Tattoo 3223

CHURCHILL NEON 626S GH NEON 17N
 BB 626 NEON 0011 CHURCHILL LADY 346
 43128328 BB MS 441 MARK DON 3035 SR PASSAGE 441
 BB MS WASH 8085
 BB 4209 MARK DOM 0135 BB MARK DONALD 4209
 BB MS 0135 MARK DON 6170 BB MS ADV 6004 1ET
 42719659 BB MS 9131 DOMINO 3118 CL 1 DOMINO 9131J
 BB MS 32F SANDMAN 1074

Act BW	CED	BW	WW	YW	M	M&G	CEM
78	-2.1	5.8	52	89	21	47	0.8
SC	FAT	RI	IMF	BMI	CEZ	BII	CHB
0.6	-0.023	0.40	0.01	\$14	\$11	\$11	\$25

40 BT 0011 NEON 3251

Calved 10-24-2013 Bull 43628109 Tattoo 3251

CHURCHILL NEON 626S GH NEON 17N
 BB 626 NEON 0011 CHURCHILL LADY 346
 43128328 BB MS 441 MARK DON 3035 SR PASSAGE 441
 BB MS WASH 8085
 BB 1083 DOMINO 5059 BB 9131 DOMINO 1083
 BB MS 5059 DOMINO 7085 BB MS 9015 SANDMAN 2220
 42822826 BB MS 1065 DOMINO 5154 BB 9131 DOMINO 1065
 BB MS ADVANCER 6154

Act BW	CED	BW	WW	YW	M	M&G	CEM
78	-1.2	5.3	57	96	24	52	1.7
C	FAT	RI	IMF	BMI	CEZ	BII	CHB
0.7	-0.013	0.49	0.09	\$16	\$12	\$12	\$29

41 BT 0011 NEON 3214

Calved 10-15-2013 Bull 43628077 Tattoo 3214

CHURCHILL NEON 626S GH NEON 17N
 BB 626 NEON 0011 CHURCHILL LADY 346
 43128328 BB MS 441 MARK DON 3035 SR PASSAGE 441
 BB MS WASH 8085
 BB 4209 MARK DOM 0135 BB MARK DONALD 4209
 BB MS 0135 MARK DOM 7158 BB MS ADV 6004 1ET
 43022200 BB MS CHURCH PATROL 9029 CHURCHILL PATRO 630
 BB MS M DONALD 6267

Act BW	CED	BW	WW	YW	M	M&G	CEM
81	-2.7	6.1	51	91	19	44	0.4
SC	FAT	RI	IMF	BMI	CEZ	BII	CHB
0.7	-0.026	0.37	0.09	\$15	\$11	\$13	\$26

42 BT 8053 YANKEE 3233

Calved 10-10-2013 Bull 43628079 Tattoo 3233

CHURCHILL YANKEE ET GH NEON 17N
 BB YANKEE 8053 CHURCHILL LADY 202
 43113977 BB MS 9131 DOMINO 3004 CL 1 DOMINO 9131J
 BB MS 32F SANDMAN 0293
 BB 32F SANDMAN 0257 BP 146D SANDMAN 32F
 BB MS 0257 SANDMAN 6213 BB MS LIBERTY 7096
 42762498 BB MS 6149 CLASSIC 0199 BB MARK CLASSIC 6149
 BB MS ADVANCER 6077

Act BW	CED	BW	WW	YW	M	M&G	CEM
77	-0.3	4.7	52	87	18	44	1.9
SC	FAT	RI	IMF	BMI	CEZ	BII	CHB
0.5	-0.007	0.43	0.12	\$15	\$13	\$12	\$27

43 BT 0011 NEON 3257

Calved 10-28-2013 Bull 43628103 Tattoo 3257

CHURCHILL NEON 626S GH NEON 17N
 BB 626 NEON 0011 CHURCHILL LADY 346
 43128328 BB MS 441 MARK DON 3035 SR PASSAGE 441
 BB MS WASH 8085
 BB 4209 MARK DON 0135 BB MARK DONALD 4209
 BB MS 0135 MARK DON 7157 BB MS ADV 6004 1ET
 43022198 BB MS 4033 LAD 1226 BB 7Z STD LAD 4033
 BB MS SANDMAN 4210

Act BW	CED	BW	WW	YW	M	M&G	CEM
77	-2.1	5.4	48	88	21	45	1.2
SC	FAT	RI	IMF	BMI	CEZ	BII	CHB
0.6	-0.030	0.36	0.03	\$14	\$12	\$12	\$24

44 BT 8053 YANKEE 3247

Calved 10-25-2013 Bull 43628080 Tattoo 3247

CHURCHILL YANKEE ET GH NEON 17N
 BB YANKEE 8053 CHURCHILL LADY 202
 43113977 BB MS 9131 DOMINO 3004 CL 1 DOMINO 9131J
 BB MS 32F SANDMAN 0293
 BB MARK DONALD 3007 BB MARK DONALD 386
 BB MS 3007 MARK DONALD 7078 BB MS M CLASSIC 8150
 43021968 BB MS 4209 MARK DON 2137 BB MARK DONALD 4209
 BB MISS SELKIRK 5111

Act BW	CED	BW	WW	YW	M	M&G	CEM
78	0.1	4.0	50	77	20	45	1.2
SC	FAT	RI	IMF	BMI	CEZ	BII	CHB
0.5	-0.002	0.40	0.10	\$16	\$14	\$13	\$25

HEREFORD BULLS

45 BT 8053 YANKEE 3216

Calved 10-15-2013 Bull 43628087 Tattoo 3216

CHURCHILL YANKEE ET
BB YANKEE 8053
43113977 BB MS 9131 DOMINO 3004

CHURCHILL YANKEE
BB MS YANKEE 9030
43121839 BB MS 1020 MARK ADV 3076

GH NEON 17N
CHURCHILL LADY 202
CL 1 DOMINO 9131J
BB MS 32F SANDMAN 0293
GH NEON 17N
CHURCHILL LADY 202
BB MARK DONALD 1020
BB MS 9131 DOMINO 1036

Act BW	CED	BW	WW	YW	M	M&G	CEM
77	0.6	4.2	58	90	18	46	2.5
SC	FAT	RI	IMF	BMI	CEZ	BII	CHB
0.4	-0.006	0.43	0.24	\$17	\$14	\$12	\$31

46 BT 0011 NEON 3262

Calved 11-15-2013 Bull 43628084 Tattoo 3262

CHURCHILL NEON 626S
BB 626 NEON 0011
43128328 BB MS 441 MARK DON 3035

BB 6149 MR CLASSIC 3169
BB MS 3169 CLASSIC 7120
42822858 BB MS 2000 MARK DON 2091

GH NEON 17N
CHURCHILL LADY 346
SR PASSAGE 441
BB MS WASH 8085
BB MARK CLASSIC 6149
BB MS WASH 0084
MARK DONALD 2000
BB MS STD LAD 4011

Act BW	CED	BW	WW	YW	M	M&G	CEM
77	-2.6	5.5	46	82	20	43	1.5
SC	FAT	RI	IMF	BMI	CEZ	BII	CHB
0.6	-0.069	0.53	0.00	\$15	\$12	\$14	\$25

47 BT 8053 YANKEE 3226

Calved 10-20-2013 Bull 43628075 Tattoo 3226

CHURCHILL YANKEE ET
BB YANKEE 8053
43113977 BB MS 9131 DOMINO 3004

CX 897 ADVANCE 0326
BB MS 326 ADVANCE 7104
42852199 BB MS 9208 SANDMAN 2229

GH NEON 17N
CHURCHILL LADY 202
CL 1 DOMINO 9131J
BB MS 32F SANDMAN 0293
H5 500 ADVANCE 897
CX MISS MARK DOM 548
BB 32F SANDMAN 9208
BB MS ADVANCER 6136

Act BW	CED	BW	WW	YW	M	M&G	CEM
79	0.1	4.2	56	89	19	47	2.3
SC	FAT	RI	IMF	BMI	CEZ	BII	CHB
0.5	0.013	0.54	0.10	\$16	\$14	\$12	\$27

48 BT 0011 NEON 3230

Calved 11-2-2013 Bull 43628076 Tattoo 3230

CHURCHILL NEON 626S
BB 626 NEON 0011
43128328 BB MS 441 MARK DON 3035

BB 4209 MARK DOM 0135
BB MS 0135 MARK DON 6180
42726275 BB MS 9208 SANDMAN 3233

GH NEON 17N
CHURCHILL LADY 346
SR PASSAGE 441
BB MS WASH 8085
BB MARK DONALD 4209
BB MS ADV 6004 1 ET
BB 32F SANDMAN 9208
BB MS M CLASSIC 6195

Act BW	CED	BW	WW	YW	M	M&G	CEM
79	-2.5	5.7	52	94	20	46	0.7
SC	FAT	RI	IMF	BMI	CEZ	BII	CHB
0.7	-0.032	0.49	0.00	\$14	\$11	\$12	\$26

49 BT 0011 NEON 3235

Calved 11-20-2013 Bull 43628102 Tattoo 3235

CHURCHILL NEON 626S
BB 626 NEON 0011
43128328 BB MS 441 MARK DON 3035

BB 9131 DOMINO 1065
BB MS 1065 DOMINO 8066
43116976 BB MS 767G ADVANCE 4078

GH NEON 17N
CHURCHILL LADY 346
SR PASSAGE 441
BB MS WASH 8085
CL 1 DOMINO 9131J
BB MS 32F SANDMAN 9149
HH ADVANCE 767G 1ET
BB MS 32F SANDMAN 0109

Act BW	CED	BW	WW	YW	M	M&G	CEM
78	0.3	4.6	58	98	26	54	2.1
SC	FAT	RI	IMF	BMI	CEZ	BII	CHB
0.7	-0.011	0.47	0.08	\$15	\$14	\$11	\$29

50 CR HARLAND NEON 437

Calved 12-28-2013 Bull 43512923 Tattoo 437

CJH HARLAND 408
SR SAGA 320X
43105156 SR FUTURA 619

UPS NEON 6198
CR MS NEON SAND 0297
43272129 CR SANDLADY 532D

HH ADVANCE 9005J
CJH L1 DOMINETTE 0064
RH FUTURA KING LAD 63M
SR MARVEL 978
GH NEON 17N
UPS MS HOMEBUILDER 0838
BB 32F SANDMAN 0226
CR MS HARD DRIVE H040

Act BW	CED	BW	WW	YW	M	M&G	CEM
		4.3	46	72	16	39	
SC	FAT	RI	IMF	BMI	CEZ	BII	CHB
0.7	0.017	0.23	0.12				

51 BT 0011 NEON 3264

Calved 11-30-2013 Bull 43628105 Tattoo 3264

CHURCHILL NEON 626S
BB 626 NEON 0011
43128328 BB MS 441 MARK DON 3035

DHR L1 SELKIRK
BB MS 735 SELKIRK 6097
42718164 BB MS 9131 DOMINO 4136

GH NEON 17N
CHURCHILL LADY 346
SR PASSAGE 441
BB MS WASH 8085
LONESTAR DOMINO 75B
LS STAR MARKETTE 66C
CTY BONANZA 01K
BB MS WASH 8101

Act BW	CED	BW	WW	YW	M	M&G	CEM
78	-0.5	4.4	50	87	24	49	1.4
SC	FAT	RI	IMF	BMI	CEZ	BII	CHB
0.7	-0.048	0.40	-0.13	\$13	\$13	\$11	\$23

52 BT 8053 YANKEE 3261

Calved 10-15-2013 Bull 43628091 Tattoo 3261

CHURCHILL YANKEE ET
BB YANKEE 8053
43113977 BB MS 9131 DOMINO 3004

BB 9131 DOMINO 1065
BB MS 1065 DOMINO 6093
42718161 BB MS 4033 LAD 1226

GH NEON 17N
CHURCHILL LADY 202
CL 1 DOMINO 9131J
BB MS 32F SANDMAN 0293
CL 1 DOMINO 9131J
BB MS 32F SANDMAN 9149
BB 7Z STD LAD 4033
BB MS SANDMAN 4210

Act BW	CED	BW	WW	YW	M	M&G	CEM
77	0.8	4.4	56	89	20	48	2.5
SC	FAT	RI	IMF	BMI	CEZ	BII	CHB
0.3	0.002	0.41	0.12	\$14	\$14	\$10	\$28

53 BT 1018 DOMINO 3258

Calved 11-5-2013 Bull 43628100 Tattoo 3258

UPS DOMINO 3027
BB 3027 DOMINO 1018
43193486 BB MS MONUMENT 6007

BB 1065 DOMINO 5105
BB MS 5105 DOMINO 8184
43117041 BB MS 6149 CLASSIC 2196

CL 1 DOMINO 9126J 1ET
UPS MISS DIAMOND 1353
MH MONUMENT 3147
BB MS 32F SANDMAN 0028
BB 9131 DOMINO 1065
BB MS 6149 CLASSIC 1204
BB MARK CLASSIC 6149
BB MS 637 ADV 9265

Act BW	CED	BW	WW	YW	M	M&G	CEM
80	1.7	4.6	48	85	22	46	1.0
SC	FAT	RI	IMF	BMI	CEZ	BII	CHB
0.6	-0.009	0.26	0.08	\$15	\$15	\$12	\$24

54 BT 8053 YANKEE 3234

Calved 10-7-2013 Bull 43628090 Tattoo 3234

CHURCHILL YANKEE ET
BB YANKEE 8053
43113977 BB MS 9131 DOMINO 3004

CL 1 DOMINO 9131J
BB MS 9131 DOMINO 7132
42822867 BB MS 013 SANDMAN 2251

GH NEON 17N
CHURCHILL LADY 202
CL 1 DOMINO 9131J
BB MS 32F SANDMAN 0293
CL 1 DOMINO 5131E
CL 1 DOMINETTE 4148
TL 32F SANDMAN 013
BB MS KERNEL 2007

Act BW	CED	BW	WW	YW	M	M&G	CEM
77	1.2	4.6	55	86	20	48	1.4
SC	FAT	RI	IMF	BMI	CEZ	BII	CHB
0.5	0.013	0.32	0.13	\$15	\$14	\$11	\$26

HEREFORD BULLS

55 BT 0011 NEON 3253

Calved 11-22-2013 Bull 43628107 Tattoo 3253

CHURCHILL NEON 626S
BB 626 NEON 0011
43128328 BB MS 441 MARK DON 3035

BB 4209 MARK DOM 0135
BB MS 0135 MARK DOM 7180
43022201 BB MS 7Z S LAD 6010

GH NEON 17N
CHURCHILL LADY 346
SR PASSAGE 441
BB MS WASH 8085
BB MARK DONALD 4209
BB MS ADV 6004 1ET
COMMANDER STD LAD 7Z
BB MS POWER 2239

Act BW	CED	BW	WW	YW	M	M&G	CEM
76	-2.9	5.9	55	98	19	47	1.1
SC	FAT	RI	IMF	BMI	CEZ	BII	CHB
0.8	-0.026	0.50	0.06	\$16	\$11	\$13	\$28

56 BT 0011 NEON 3241

Calved 10-16-2013 Bull 43628078 Tattoo 3241

CHURCHILL NEON 626S
BB 626 NEON 0011
43128328 BB MS 441 MARK DON 3035

BB 1065 DOMINO 4027
BB MS 4027 DOMINO 7109
42822847 BB MS RC DOMINO 2025

GH NEON 17N
CHURCHILL LADY 346
SR PASSAGE 441
BB MS WASH 8085
BB 9131 DOMINO 1065
BB MS124HHOMEBLDR0272
RCH DOMINO 9005
BB MS HARD DRIVE 9290

Act BW	CED	BW	WW	YW	M	M&G	CEM
77	-0.7	5.0	49	94	23	48	1.7
SC	FAT	RI	IMF	BMI	CEZ	BII	CHB
0.6	-0.003	0.26	0.07	\$13	\$13	\$10	\$24

57 BT 8053 YANKEE 3290

Calved 10-27-2014 Bull 4 Tattoo 3247

CHURCHILL YANKEE ET
BB YANKEE 8053
43113977 BB MS 9131 DOMINO 3004

CHURCHILL NEON 626S
BB MS 626S NEON 9083
43117212 BB MS 9131 DOMINO 1036

GH NEON 17N
CHURCHILL LADY 202
CL 1 DOMINO 9131J
BB MS 32F SANDMAN 0293
GH NEON 17N
CHURCHILL LADY 346
CL 1 DOMINO 9131J
BB MS HARD DRIVE 9146

Act BW	CED	BW	WW	YW	M	M&G	CEM
76	0.1	5.1	61	105	23	54	1.8
SC	FAT	RI	IMF	BMI	CEZ	BII	CHB
0.5	-0.007	0.57	0.15	\$15	\$13	\$9	\$33

58 BT 0011 NEON 3229

Calved 11-10-2013 Bull 43628089 Tattoo 3229

CHURCHILL NEON 626S
BB 626 NEON 0011
43128328 BB MS 441 MARK DON 3035

BB 9131 DOMINO 1083
BB MS 1083 DOMINO 7169
43022001 BB MS 9006 SANDMAN 4165

GH NEON 17N
CHURCHILL LADY 346
SR PASSAGE 441
BB MS WASH 8085
CL 1 DOMINO 9131J
BB MS4209 MARK DON9130
BB 32F SANDMAN 9006
BB MS BJ DOMINO 1101

Act BW	CED	BW	WW	YW	M	M&G	CEM
80	-0.6	4.8	54	96	24	51	1.4
SC	FAT	RI	IMF	BMI	CEZ	BII	CHB
0.7	-0.006	0.46	0.13	\$16	\$13	\$12	\$28

59 BT 0048 NEON 3232

Calved 11-7-2013 Bull 43628108 Tattoo 3232

CHURCHILL NEON 626S
BB 626 NEON 0048
43128366 BB MS 441 MARK DON 3037

BB 1065 DOMINO 5105
BB MS 5105 DOMINO 8175
43117031 BB MS LANDMARK 1108

GH NEON 17N
CHURCHILL LADY 346
SR PASSAGE 441
BB MS 301 DOM 5190
BB 9131 DOMINO 1065
BB MS 6149 CLASSIC 1204
BP LANDMARK 126H
BB MS ADV 6004 1ET

Act BW	CED	BW	WW	YW	M	M&G	CEM
78	-1.11	4.8	50	86	22	47	1.3
SC	FAT	RI	IMF	BMI	CEZ	BII	CHB
0.7	-0.015	0.30	0.09	\$15	\$13	\$13	\$25

60 BT 8053 YANKEE 3215

Calved 10-10-2013 Bull 43628082 Tattoo 3215

CHURCHILL YANKEE ET
BB YANKEE 8053
43113977 BB MS 9131 DOMINO 3004

BB 6149 MO CLASSIC 3206
BB MS 3206 CLASSIC 6148
42826282 BB MS CL1 DOM 4076

GH NEON 17N
CHURCHILL LADY 202
CL 1 DOMINO 9131J
BB MS 32F SANDMAN 0293
BB MARK CLASSIC 6149
BB MS4209MARK DON0039
CL 1 DOMINO 1061
BB MS MARK DON 2142

Act BW	CED	BW	WW	YW	M	M&G	CEM
78	-0.6	4.4	49	79	18	42	0.9
SC	FAT	RI	IMF	BMI	CEZ	BII	CHB
0.5	-0.003	0.39	0.13	\$16	\$13	\$13	\$24

61 BT 8053 YANKEE 3221

Calved 10-11-2013 Bull 43628081 Tattoo 3221

CHURCHILL YANKEE ET
BB YANKEE 8053
43113977 BB MS 9131 DOMINO 3004

BB MS BJ DOMINO 9118
43117109 BB MS 5116 ADVANCER 7111

GH NEON 17N
CHURCHILL LADY 202
CL 1 DOMINO 9131J
BB MS 32F SANDMAN 0293
XP L1 DOMINO 01050
BJ L1 DOMINETTE 2069
BB MARK ADVANCER 5116
BB MS 3007 MARK DON5116

Act BW	CED	BW	WW	YW	M	M&G	CEM
78	-0.5	4.2	52	81	14	43	1.0
SC	FAT	RI	IMF	BMI	CEZ	BII	CHB
0.6	0.002	0.38	0.14	\$17	\$14	\$15	\$26

POLLED HEREFORD BULLS



62 HN RAFTSMAN 28X 1308

Calved 2-25-2013 Bull 43388524 Tattoo 1308

HARVIE RAFTSMAN 16R
BVR RAFTSMAN 028X ET
43154805 CIRCLE-D 832W WILMA 19F

RRH MR FELT 1082
HN MS 1082 607
42680920 HN 637 ADVANCE 016

HARVIE LADIES MAN 4L
HARVIE MS FIREFLY 51F
CIRCLE-D WRANGLER 832W
TWIN J MS STK 167R
RRH MS FELT 6059
RRH MS FELT 5046
H5 9012 ADV 637 1ET
BB MS NEW IDEA 8078

Act BW	CED	BW	WW	YW	M	M&G	CEM
79	0.2	3.8	42	67	16	37	0.5
SC	FAT	RI	IMF	BMI	CEZ	BII	CHB
0.8	-0.001	0.12	-0.10	\$16	\$15	\$15	\$16

63 HN RAFTSMAN 28X 1304

Calved 2-19-2013 Bull 43388513 Tattoo 1304

HARVIE RAFTSMAN 16R
BVR RAFTSMAN 028X ET
43154805 CIRCLE-D 832W WILMA 19F

BB 3007 MARK DON 6089
HN BB MARK DON 6089 1014
43090831 HN 637 ADVANCE 016

HARVIE LADIES MAN 4L
HARVIE MS FIREFLY 51F
CIRCLE-D WRANGLER 832W
TWIN J MS STK 167R
BB MARK DONALD 3007
BB MS 9131 DOMINO 3004
H5 9012 ADV 637 1 ET
BB MS NEW IDEA 8078

Act BW	CED	BW	WW	YW	M	M&G	CEM
75	0.3	4.3	42	67	15	36	0.2
C	FAT	RI	IMF	BMI	CEZ	BII	CHB
0.5	-0.011	0.19	-0.07	\$14	\$14	\$13	\$17

POLLED HEREFORD BULLS

64 HN RAFTSMAN 28X 1319
Calved 3-31-13 Bull 43388521 Tattoo 1319

HARVIE RAFTSMAN 16R HARVIE LADIES MAN 4L
BVR RAFTSMAN 028X ET HARVIE MISS FIREFLY 51F
43154805 CIRCLE-D 832W WILMA 19F CIRCLE-D WRANGLER 832W
TWIN J MISS STK 167R
HCC NAVIGATOR 4N REMITALL ONLINE 122L
HN MS 4N 627 HAROLDSON'S SARAG 22J
42697235 HN MS 9061 PATROL 313 BB CHURCH PATROL 9061
BB MS CENTURION 7141

Act BW	CED	BW	WW	YW	M	M&G	CEM
60	2.7	0.6	30	53	16	31	2.1
SC	FAT	RI	IMF	BMI	CEZ	BII	CHB
0.5	-0.001	0.09	-0.04	\$15	\$17	\$14	\$12

65 BVR COWBOY 352A
Calved 10-5-2013 Bull 43456710 Tattoo 352A

CHURCHILL RANCHER 592R MH DAKOTA 0230
M6 CISCOS BUCKAROO 155 ET CHURCHILL LADY 202
43178502 M6 MS 122L CSCO LADY 7176P REMITALL ONLINE 1226
SHF MISS M326 R13
BVR PREMIER 702T GHC PREMIER 152M
BVR LORELI 919W OXH LONA 1245
43150791 BVR SARAH 704T HCC BFH 8006 PARADIGM
OXH KRIS 4030

Act BW	CED	BW	WW	YW	M	M&G	CEM
86	0.9	4.2	60	91	26	56	2.7
SC	FAT	RI	IMF	BMI	CEZ	BII	CHB
1.1	0.009	0.50	0.20	\$22	\$16	\$18	\$31

66 BB 028X RAFTSMAN 3170
Calved 11-16-2013 Bull 43450956 Tattoo 3170

HARVIE RAFTSMAN 16R HARVIE LADIES MAN 4L
BVR RAFTSMAN 028X ET HARVIE MS FIREFLY 51F
43154805 CIRCLE-D 832W WILMA 19F CIRCLE-D WRANGLER 832W
TWIN J MS STK 167R
SR COMPASS 1117 CJH HARLAND 408
BB MS 1117 COMPASS 0132 SR MANDY 0101
43128313 BB MS 735 SELFKIRK 6071 DHR L1 SELKIRK

Act BW	CED	BW	WW	YW	M	M&G	CEM
75	1.2	3.8	44	68	21	43	1.0
SC	FAT	RI	IMF	BMI	CEZ	BII	CHB
0.6	0.036	0.01	-0.03	\$13	\$15	\$11	\$15

ANGUS BULLS

67 BB MISSING LINK 3035
Calved 4-20-2013 Bull 17554526 Tattoo 3035

OCC Missing Link 830M OCC Headliner 661H
JACS Missing Link 9938 OCC Dixie Erica 946K
16818737 JACS Peg 4308 Pine Creek Traveler 124-1107
L H R Peg 1051
BB 4008 Krugerrand 7158 BB Krugerrand 4008
BB LADY 5157 BB MS Pride 3047
15145490 BB Lady 1319 Ankonian Ext 224
Cox Hi Lady 6110

Act BW	CED	BW	WW	YW	M	M&G	CEM
79	2	1.8	41	68	20		5
\$EN	% IMF	RE	FAT	\$W	\$F	\$G	\$B
5.80	0.28	0.21	0.031	35.04	12.83	20.41	66.20



BB MISSING LINK 3028

ANGUS BULLS

68 BB MISSING LINK 3028
Calved 3-24-2013 Bull 17744436 Tattoo 3028

OCC Missing Link 830M OCC Headliner 661H
JACS Missing Link 9938 OCC Dixie Erica 946K
16818737 JACS Peg 4308 Pine Creek Traveler 124-1107
L H R Peg 1051
PL EXT T873 N BAR EMULATION EXT
BB MS BEYONCE 0016 GAR AMBUSH 915
16651409 BB MS KRUGERRAND 6116 RITZVILLES BVDESIGN 409
C BAR U DESIGNS 4563

Act BW	CED	BW	WW	YW	M	M&G	CEM
72	6	0.6	48	77	21		9
\$EN	% IMF	RE	FAT	\$W	\$F	\$G	\$B
-0.56				46.51	23.61		

69 BB DHK 9001 DESIGN T73
Calved 3-20-2013 Bull 17742898 Tattoo T73

B/R NEW DESIGN 036 VDAR NEW TREND 315
PL NEW DESIGN 9001 B/R BLACKCAPEMPRESS76
16981744 THREE TREES BLACKCAP3671 GAR GRID MAKER
GAR LUCYS BOY 2118
PL NAPOLEON R503 BALDRIDGE NAPOLEON 73
DAVIS HOLLOW QUEEN T310 LLF 583 GRIDMAKER 1119
17153322 DHQ T230 BB 4008KRUGERRAND7158
BB DHQ T245

Act BW	CED	BW	WW	YW	M	M&G	CEM
84	3	2.5	36	64	21		8
\$EN	% IMF	RE	FAT	\$W	\$F	\$G	\$B
6.30				26.73	9.35		

70 BB MISSING LINK 3033
Calved 4-15-2013 Bull 17554525 Tattoo 3033

OCC Missing Link 830M OCC Headliner 661H
JACS Missing Link 9938 OCC Dixie Erica 946K
16818737 JACS Peg 4308 Pine Creek Traveler 124-1107
L H R Peg 1051
New Design of P A R 3 B/R New Design 323
B B PRIDE 5192 Cox Erica 126-606
15223793 B&K Pride 314 B B Designs Plus 1225
B B Pride 9381

Act BW	CED	BW	WW	YW	M	M&G	CEM
82	5	0.8	47	72	23		5
\$EN	% IMF	RE	FAT	\$W	\$F	\$G	\$B
-1.12				49.15	15.68		



BB MISSING LINK 3049

71 BB MISSING LINK 3049
Calved 12-3-2013 Bull 17953558 Tattoo 3049

OCC Missing Link 830M OCC Headliner 661H
JACS Missing Link 9938 OCC Dixie Erica 946K
16818737 JACS Peg 4308 Pine Creek Traveler 124-1107
L H R Peg 1051
ANKONIAN WERNER WILD FIRE 96 SAV8180 TRAVELER 004
BB BETTY 8090 FSR ELBA SPCAL DGN S406
16357440 BB BETTY 4046 EXG LIMESTONE UNO 1111
BB BETTY 9091

Act BW	CED	BW	WW	YW	M	M&G	CEM
75	5	1.9	44	77	22		7
\$EN	% IMF	RE	FAT	\$W	\$F	\$G	\$B
-2.16	0.33	0.48	0.021	37.39	26.31	24.61	102.4

ANGUS BULLS

72 BB MISSING LINK 3048

Calved 11-21-2013 Bull 17955744 Tattoo 3048

OCC Missing Link 830M
JACS Missing Link 9938
16818737 JACS Peg 4308

SITZ TRAVELER 8180
BB BLACKCAP 1010
16953449 PL BLACKCAP T944

OCC Headliner 661H
OCC Dixie Erica 946K
Pine Creek Traveler 124-1107
L H R Peg 1051
GDAR TRAVELER 71
SITZ EVERELDA ENTENSE 1137
SUMITCREST HIGH PRIME 0H29
NER ICC BLACKCAP 0192

Act BW	CED	BW	WW	YW	M	CEM	
70	4	1.5	42	74	24	8	
\$EN	% IMF	RE	FAT	\$W	\$F	\$G	\$B
-3.81	0.37	0.29	0.012	38.93	22.44	26.75	80.46

73 BB MISSING LINK 4001

Calved 1-2-2014 Bull 17820710 Tattoo 4001

OCC Missing Link 830M
JACS Missing Link 9938
16818737 JACS Peg 4308

B/R FRONT RANGE 052
BB MS WINSOME 1001
16963495 MAR MISS WINSOME 5115

OCC Headliner 661H
OCC Dixie Erica 946K
Pine Creek Traveler 124-1107
L H R Peg 1051
B/R NEW DESIGN 036
WHITE FENCE PRIDE H1
MAR GARANITE PEAK 3058
MAR MISS WINSOME 1007

Act BW	CED	BW	WW	YW	M	CEM	
80	5	1.4	48	80	27	8	
\$EN	% IMF	RE	FAT	\$W	\$F	\$G	\$B
-11.98	0.45	0.71	0.006	49.53	28.84	33.73	111.9

74 BB I11 RITO 4012

Calved 3-1-2014 Bull 17861389 Tattoo 4012

RITO 616 OF 4B20 6807
RITO 111 OF 2536 RITO 616
13793825 GAR PRECISION 2536

N BAR PRIME TIME B806
JACS TOREBY QUEEN 6262
15390018 JACS TOREBY QUEEN 0315

DHD TRACELER 6807
RITA 4B20 OF 0FB1 BANDO
GAR PRECISION 1680
GAR EXT 2104
GARDENS PRIME TIME
N BAR MS EMULOUS A404
PINE CREK TRVL124-1107
JACS TOREBY QUEEN5539

Act BW	CED	BW	WW	YW	M	CEM	
80	1	3.1	45	83	22	8	
\$EN	% IMF	RE	FAT	\$W	\$F	\$G	\$B
-5.11	0.83	0.28	0.029	31.74	39.48	36.45	129.9

75 BB DHK 9001 DESIGN T54

Calved 2-20-2014 Bull 18073109 Tattoo T54

B/R NEW DESIGN 036
PL NEW DESIGN 9001
16981744 THREE TREES BLACKCAP3671

BB KRUG IMAGE 9078
DHQ T402
14276432 DAVIS HOLLOW QUEEN T36

VDAR NEW TREND 315
B/R BLACKCAPEMPRESS76
GAR GRID MAKER
GAR LUCYS BOY 2118
KRUGERRAND IMAGE 1635
COX PRIDE X98
ANKONIAN EXT 224
DAVIS HOLLOW QUEEN

Act BW	CED	BW	WW	YW	M	CEM	
80	1	2.2	39	68	18	6	
\$EN	% IMF	RE	FAT	\$W	\$F	\$G	\$B
8.95	0.32	0.19	0.002	27.79	14.15	26.43	53.34

76 BB DHK 9001 DESIGN T34

Calved 3-18-2014 Bull 18073124 Tattoo T34

B/R NEW DESIGN 036
PL NEW DESIGN 9001
16981744 THREE TREES BLACKCAP3671

BB 004 TRAVELER 7049
DAVIS HOLLOW QUEEN T21
17136353 DAVIS HOLLOW QUEEN T374

VDAR NEW TREND 315
B/R BLACKCAPEMPRESS76
GAR GRID MAKER
GAR LUCYS BOY 2118
SAV 8180 TRAVELER 004
BB LASSIE 4041
BB EQUINOX 8114
DHQ T280

Act BW	CED	BW	WW	YW	M	CEM	
80	4	2.0	41	76	22	9	
\$EN	% IMF	RE	FAT	\$W	\$F	\$G	\$B
-1.63				32.22	26.59		

77 BB DHK 9001 DESIGN T124

Calved 3-22-2014 Bull 18073127 Tattoo T124

B/R NEW DESIGN 036
PL NEW DESIGN 9001
16981744 THREE TREES BLACKCAP3671

BB 004 TRAVELER 7049
DAVIS HOLLOW QUEEN T152
17435551 DAVIS HOLLOW QUEEN T45

VDAR NEW TREND 315
B/R BLACKCAPEMPRESS76
GAR GRID MAKER
GAR LUCYS BOY 2118
SAV 8180 TRAVELER 004
BB LASSIE 4041
BB FOCUS 0147
BLACK AGNES T328

Act BW	CED	BW	WW	YW	M	CEM	
80	4	2.4	39	74	21	9	
\$EN	% IMF	RE	FAT	\$W	\$F	\$G	\$B
1.04				27.19	24.46		

78 BB DHK 9001 DESIGN T94

Calved 2-12-2014 Bull 18073125 Tattoo T94

B/R NEW DESIGN 036
PL NEW DESIGN 9001
16981744 THREE TREES BLACKCAP3671

BB 004 TRAVELER 7049
DAVIS HOLLOW QUEEN T461
17136327 DHQ T230

VDAR NEW TREND 315
B/R BLACKCAPEMPRESS76
GAR GRID MAKER
GAR LUCYS BOY 2118
SAV 8180 TRAVELER 004
BB LASSIE 4041
BB 4008KRUGERRAND7158
BB DHQ T245

Act BW	CED	BW	WW	YW	M	CEM	
80	4	2.0	38	70	20	8	
\$EN	% IMF	RE	FAT	\$W	\$F	\$G	\$B
4.75				27.92	18.23		

79 BB DHK 9001 DESIGN T504

Calved 3-15-2014 Bull 18073121 Tattoo T504

B/R NEW DESIGN 036
PL NEW DESIGN 9001
16981744 THREE TREES BLACKCAP3671

BB UNO NEW DESIGN 5018
DAVIS HOLLOW QUEEN T428
16242800 DHQ T452

VDAR NEW TREND 315
B/R BLACKCAPEMPRESS76
GAR GRID MAKER
GAR LUCYS BOY 2118
EXG LIMESTONE UNO 1111
BB LASSIE 1294
BB KRUG IMAGE 9078
BB DHQ T245

Act BW	CED	BW	WW	YW	M	CEM	
80	2	2.2	37	66	19	6	
\$EN	% IMF	RE	FAT	\$W	\$F	\$G	\$B
8.43	0.48	0.17	0.008	26.40	12.07	32.16	56.55

80 BB DHK 9001 DESIGN T14

Calved 2-14-2014 Bull 18073120 Tattoo T14

B/R NEW DESIGN 036
PL NEW DESIGN 9001
16981744 THREE TREES BLACKCAP3671

BB UNO NEW DESIGN 5018
DAVIS HOLLOW QUEEN T128
16242805 DAVIS HOLLOW QUEEN T13

VDAR NEW TREND 315
B/R BLACKCAPEMPRESS76
GAR GRID MAKER
GAR LUCYS BOY 2118
EXG LIMESTONE UNO 1111
BB LASSIE 1294
BB KRUG IMAGE 9078
BLACK AGNES T418

Act BW	CED	BW	WW	YW	M	CEM	
80	-1	3.0	37	68	20	4	
\$EN	% IMF	RE	FAT	\$W	\$F	\$G	\$B
5.80				23.46	15.47		

81 T154

Calved 2-8-2014 Bull unregistered Tattoo T154

B/R NEW DESIGN 036
PL NEW DESIGN 9001
16981744 THREE TREES BLACKCAP3671

TWIN EAGLES M980
DAVIS HOLLOW QUEEN T167
15944561 DHQ T352

VDAR NEW TREND 315
B/R BLACKCAPEMPRESS76
GAR GRID MAKER
GAR LUCYS BOY 2118
GAR PRECISION 1680
ACF BURGESS 9523
BB KRUG IMAGE 9078
DAVISHOLLOW QUEEN T67

Act BW	CED	BW	WW	YW	M	CEM	
\$EN	% IMF	RE	FAT	\$W	\$F	\$G	\$B

ANGUS BULLS

CHAROLAIS BULLS

82 BB DHK 9001 DESIGN T24
Calved 2-16-2014 Bull 18073108 Tattoo T24

B/R NEW DESIGN 036 VDAR NEW TREND 315
PL NEW DESIGN 9001 B/R BLACKCAPEMPRESS76
16981744 THREE TREES BLACKCAP3671 GAR GRID MAKER
GAR LUCYS BOY 2118
BB 4008 KRUGERRAND 7158 BB KRUGERRAND 4008
DHQ T431 BB MS PRIDE 3047
14095785 DAVIS HOLLOW QUEEN T107 ANKONIAN EXT 224
DAVIS HOLLOW QUEEN T201

Act BW	CED	BW	WW	YW	M	CEM	
	5	1.0	36	67	20	10	
\$EN	% IMF	RE	FAT	\$W	\$F	\$G	\$B
6.33	0.39	0.08	0.004	28.69	14.42	28.30	48.13

83 BB DHK 9001 DESIGN T74
Calved 3-3-2014 Bull 18073126 Tattoo T74

B/R NEW DESIGN 036 VDAR NEW TREND 315
PL NEW DESIGN 9001 B/R BLACKCAPEMPRESS76
16981744 THREE TREES BLACKCAP3671 GAR GRID MAKER
GAR LUCYS BOY 2118
BB 004 TRAVELER 7049 SAV 8180 TRAVELER 004
DAVIS HOLLOW QUEEN T92 BB LASSIE 4041
17435549 DHQ T431 BB 4008KRUGERRAND7158
DAVISHOLLOWQUEENT107

Act BW	CED	BW	WW	YW	M	CEM	
	5	1.7	37	71	21	10	
\$EN	% IMF	RE	FAT	\$W	\$F	\$G	\$B
2.63				27.77	20.61		

84 ROCKING R CONSENSUS 490
Calved 2-24-2014 Bull 17893409 Tattoo 490

CONNEALY CONSENSUS KMK ALLIANCE 6595 I87
CONNEALY CONSENSUS 7229 BLINDA OF CONANGA 004
16447771 BLUE LILLY OF CONANGA 16 WOODHILL ADMIRAL 77K
BLUE CRUSH OFCNG6020
TC ADANTAGE KRUGERRAND OF DONAMERE 490
ROCKING R DREAM 7101 TC PRIDE 2010
15807256 SA MONTANA DREAM 9814 AAR RITO 1686
SA MONTANA DREAM

Act BW	CED	BW	WW	YW	M	CEM	
NA	6	0.9	50	91	29	7	
\$EN	% IMF	RE	FAT	\$W	\$F	\$G	\$B
-21.32	0.72	0.27	0.009	49.82	46.71	39.33	88.32

85 ROCKING R CONSENSUS 494
Calved 3-4-2014 Bull 17893413 Tattoo 494

CONNEALY CONSENSUS KMK ALLIANCE 6595 I87
CONNEALY CONSENSUS 7229 BLINDA OF CONANGA 004
16447771 BLUE LILLY OF CONANGA 16 WOODHILL ADMIRAL 77K
BLUE CRUSH OFCNG6020
TC ADANTAGE KRUGERRAND OF DONAMERE 490
ROCKING R DREAM 7101 TC PRIDE 2010
15807256 SA MONTANA DREAM 9814 AAR RITO 1686
SA MONTANA DREAM

Act BW	CED	BW	WW	YW	M	CEM	
NA	6	0.9	50	91	29	7	
\$EN	% IMF	RE	FAT	\$W	\$F	\$G	\$B
-21.32	0.87	0.29	0.020	49.82	46.71	41.69	97.78

F1 BRAFORD BULLS

86 F1 BRAFORD BULL

Calved 11-1-2013
SIRE BB CATTLE CO REGISTERED HEREFORD BULL
DAM MAC MANNING GREY BRAHMA COW

87 F1 BRAFORD BULL

Calved 11-7-2013
SIRE BB CATTLE CO REGISTERED HEREFORD BULL
DAM MAC MANNING GREY BRAHMA COW



Bayvue Farms

Dedicated to Livestock in Missouri Since 1883

2482 Fowler Road - Herman, MO 65041 • (573)694-2697
www.bayvuefarms.com • bayvuefarms@gmail.com

88 KC JACK RUSSELL B94
Calved 2-28-2014 Bull M852364 Tattoo B94

COOLEY RUSSELL 1410R9 EATONS ELEMENT 1353
KC JACK RUSSELL Z6 MS CCR SCHURSHOT1410JP
M825863 KC JACKIE K45 BALDRIDGE KOJACK 29K
SSF MISS ALI SMOKE 821
KC SIR DUKE K34 KC MAC-A-DUKE K92
KC DUTCHESS Z49 KC JACKIE K83
F1158760 KC JACKEY K139 BALDRIDGE KOJACK 29K
KC LADY MAC K66

Act BW	Adj WW	Adj YW	CE	BW	WW	YW	M
78	731	1275	7.6	-1.1	37	60	13
MCE	MTL	SC	CW	REA	FAT	MARB	
5.1	31	0.0		9	0.09	0.006	0.02

89 DH DISTANCE WALKER
Calved 3-3-2014 Bull M861727 Tattoo 402

RC DISTANCE 3154 PLD LT DISTANCE 5025 PLD
WF POLLED MR DISTANCE 951 RC MS WHITEHOT 198 PD
M775636 WF LADY MC COOL 607 PD KEYS MCHENRY 24M
WF COOLD WIND 120 PDL
WF WALKER PLD 954 EC TANK 40D
BH WALKER DANNE 220 WF MISS PLDMP 409
F1036549 BAYVUE DIANNE 0779 WC DICTATOR 17
MISS HCR RANGER 0075

Act BW	Adj WW	Adj YW	CE	BW	WW	YW	M
80	770	1310	-5.3	1.6	24	43	7
MCE	MTL	SC	CW	REA	FAT	MARB	
1.5	19	0.6		9	0.28	0.001	0.01



MC DOC DUKE POLLED 42B

90 MC DOC DUKE POLLED 42B
Calved 3-29-2014 Bull M850939 Tattoo 42B

NWMSU DOC SILVER 362 PLD \$\$ MONTANA SILVER
DC POMONA DOC MAC C932P NWMSU DOLORES ET0035
M789942 DC MS POMONA MAC C716 P PF 809CR P ET
DC MS POMONA TRACK
DC POMONA DUKE C603 P VCR SIR DUKE 914 PLD
MGC DUKE PERFECT EASE 42 P DC MS POMONA VALUE
F1043068 MGC GRACE 18P POLLED MGC PERFECT EASE66NP
MGC GRACE 5G POLLED

Act BW	Adj WW	Adj YW	CE	BW	WW	YW	M
84	709	1350	5.1	0.7	29	52	15
MCE	MTL	SC	CW	REA	FAT	MARB	
3.8	29	0.6		11	-0.07	0.015	0.11

CHAROLAIS BULLS

91 BH EXPEDITER WOOPS

Calved 4-6-2014 Bull M861729 Tattoo 403

CF WOOPSTER 310N
DH WANNA TRADE WOOPS
M815806 LAUMANN'S MS TRADEMARK 962

CF FRONTLINE 1241 ET
CF MISS WOOPEE 43L
CJC TRADEMARK H45
LGR MS ANNA 303 PLD
MR INLAND EXPEDITER
MS ROCKIN ARROW
WF WALKER PLD 954
BAYVU DIANNE 0079

RAC MR EXPEDITER 3006PET
BH MISS EXPEDITER DOLL
F1134486 BH WALKER ANNE 220

Act BW	Adj WW	Adj YW	CE	BW	WW	YW	M
90	830	1375	-0.4	2.2	21	36	9
MCE	MTL	SC		CW	REA	FAT	MARB
0.8	19	0.5					

92 KC RD JACK B77

Calved 4-7-2014 Bull M852760 Tattoo B77

VCR SIR DUKE 914 PLD
MT REAL DEAL 83P
M755282 VPI LAUREN 510R

WCR SIR DUKE 761
WCR MISS MAC IV 534
LY WYOMING WIND4020 PLD
VPI LAUREN 306N
BALDRIDGE FASTTRACK 82F
BALDRIDGE ELVIRA 95H
EATONS LEADER 2233 P
KC LADY G K135

BALDRIDGE KOJACK 29K
KC MISS KOJACK K1
F1111498 KC LEADER LADY K158

Act BW	Adj WW	Adj YW	CE	BW	WW	YW	M
85	710	1225	9.0	-0.7	35	56	10
MCE	MTL	SC		CW	REA	FAT	MARB
5.7	27	0.5		9	0.11	0.005	-0.02

93 MC DOC DUKE POLLED 45B

Calved 5-23-2014 Bull M851332 Tattoo 45B

NWMSU DOC SILVER 362 PLD
DC POMONA DOC MAC C932P
M789942 DC MS POMONA MAC C716 P

S\$ MONTANA SILVER
NWMSU DOLORES ET0035
PF 809CR P ET
DC MS POMONA TRACK
VCR SIR DUKE 914 PLD
BC MS POMONA VALUE
LAFRAISE SIR PERFECTO
JH MISS MAC 104 P

DC POMONA DUKE C603P
MC SABRINA 10 POLLED
F1140715 MGC BONNIE 27L PLD

Act BW	Adj WW	Adj YW	CE	BW	WW	YW	M
83	751	1345	4.1	0.7	28	52	15
MCE	MTL	SC		CW	REA	FAT	MARB
5.3	29	0.7		11	-0.07	0.015	0.11



94 MC DOC DUKE POLLED 43B

Calved 2-28-2014 Bull M852364 Tattoo 43B

NWMSU DOC SILVER 362 PLD
DC POMONA DOC MAC C932P
M789942 DC MS POMONA MAC C716 P

S\$ MONTANA SILVER
NWMSU DOLORES ET0035
PF 809CR P ET
DC MS POMONA TRACK
VCR SIR DUKE 914 PLD
BC MS POMONA VALUE
LAFRAISE SIR PERFECTO
MGC HONEY 96G POLLED

DC POMONA DUKE C603P
MGC DUKE PERFECTO 26P
F1128463 MC ANN 46M PLD

Act BW	Adj WW	Adj YW	CE	BW	WW	YW	M
81	730	1330	3.9	0.7	28	53	16
MCE	MTL	SC		CW	REA	FAT	MARB
4.5	30	0.7		11	-0.07	0.015	0.11

HEREFORD HEIFERS

We are selling open and bred heifers. Bred heifers are Lots 95, 96 & 97. Open heifers are Lots 98, 99, 100, 101, 102, 103 & 104. All heifers will sell in group lots as shown in this catalog. All breeding information will be available the week of November 17th. We will have supplement sheets available on sale day or before upon request.



95a BB MS 1050 ADVANCE 4012

Calved 1-26-2014 Cow 43472262 Tattoo 4012B

Sire CX 3027 Advance 1050 Dam BB Ms Taylor Made 2029

Act BW	CED	BW	WW	YW	M	M&G	CEM
63	2.7	3.2	58	86	23	52	3.5
SC	FAT	RI	IMF	BMI	CEZ	BII	CHB
1.0	-0.002	0.53	0.08	\$21	\$18	\$17	\$29

95b BB MS 1006 MARK CLASS 4074

Calved 3-20-2014 Cow 43493800 Tattoo 4074B

Sire BB 4411Mark Class 1006 Dam BBMs 7127 Neon 0030

Act BW	CED	BW	WW	YW	M	M&G	CEM
77	-0.2	4.0	43	69	19	40	1.0
SC	FAT	RI	IMF	BMI	CEZ	BII	CHB
0.7	-0.012	0.29	0.00	\$16	\$14	\$15	\$19

95c BB MS 1050 ADVANCE 4084

Calved 3-24-2014 Cow 43493815 Tattoo 4084B

Sire CX 3027 Advance 1050 Dam BB Ms Monument 2030

Act BW	CED	BW	WW	YW	M	M&G	CEM
79	2.4	4.0	59	92	27	57	-0.1
SC	FAT	RI	IMF	BMI	CEZ	BII	CHB
0.7	0.024	0.52	0.10	\$16	\$15	\$11	\$28

96a BB MS 018 DOMINO 4010

Calved 1-25-2014 Cow 43490371 Tattoo 4010B

Sire Bowen 3027 Domino 018 Dam BB Ms Rest Easy 204

Act BW	CED	BW	WW	YW	M	M&G	CEM
65	7.5	0.0	42	73	31	52	3.7
SC	FAT	RI	IMF	BMI	CEZ	BII	CHB
0.7	0.022	0.32	0.22	\$18	\$21	\$14	\$24

96b BB MS 1050 ADVANCE 4033

Calved 2-21-2014 Cow 43480676 Tattoo 4033B

Sire CX 3027 Advance 1050 Dam BB Ms Yankee 2016

Act BW	CED	BW	WW	YW	M	M&G	CEM
69	4.6	1.9	54	80	28	55	3.8
SC	FAT	RI	IMF	BMI	CEZ	BII	CHB
0.8	-0.002	0.45	0.23	\$21	\$19	\$16	\$30

96c BB MS 1015 HARLAND 4053

Calved 3-8-2014 Cow 43493762 Tattoo 4053B

Sire BB Harland 1015 Dam BB Ms 285M Domino 6063

Act BW	CED	BW	WW	YW	M	M&G	CEM
70	3.2	1.5	48	82	23	47	2.9
SC	FAT	RI	IMF	BMI	CEZ	BII	CHB
0.9	-0.013	0.46	0.13	\$20	\$18	\$17	\$27

96d BB MS 1050 ADVANCE 4064

Calved 3-13-2014 Cow 43493783 Tattoo 4064B

Sire CX 3027 Advance 1050 Dam BB Ms018 Domino2032

Act BW	CED	BW	WW	YW	M	M&G	CEM
73	5.0	1.9	51	81	30	55	3.3
SC	FAT	RI	IMF	BMI	CEZ	BII	CHB
0.9	0.004	0.46	0.18	\$20	\$19	\$16	\$28



HEREFORD HEIFERS

99b BB MS 1050 ADVANCE 4106
 Calved 4-9-2014 Cow 43502142 Tattoo 4106B
 Sire CX 3027 Advance 1050 Dam BB Ms945 Harland2096

Act BW	CED	BW	WW	YW	M	M&G	CEM
76	3.7	3.0	47	73	25	48	3.2
SC	FAT	RI	IMF	BMI	CEZ	BII	CHB
0.9	0.016	0.35	0.11	\$20	\$18	\$16	\$23

99c BB MS 159 DOMINO 4116
 Calved 4-17-2014 Cow 43502151 Tattoo 4116B
 Sire CL 1 Domino 159Y 1ET Dam BB Ms Monument 1076

Act BW	CED	BW	WW	YW	M	M&G	CEM
74	0.3	3.8	51	80	34	59	-1.8
SC	FAT	RI	IMF	BMI	CEZ	BII	CHB
0.6	0.030	0.19	0.01	\$10	\$12	\$8	\$20

99d BB MS 1006 MARK CLASS 4117
 Calved 4-18-2014 Cow 43502152 Tattoo 4117B
 Sire BB 4411 Mark Class1006 Dam BB Ms 626 Neon 8111

Act BW	CED	BW	WW	YW	M	M&G	CEM
75	1.3	3.4	43	73	21	42	0.8
SC	FAT	RI	IMF	BMI	CEZ	BII	CHB
0.6	-0.030	0.24	0.00	\$15	\$15	\$13	\$21

97a HN MS RAFTSMAN 28X 1327
 Calved 11-12-2013 Cow 434460475 Tattoo N1327
 Sire BVR Raftsman 028X Dam HN Ms 9131 Domino 734

Act BW	CED	BW	WW	YW	M	M&G	CEM
71	0.7	4.1	44	74	19	41	-0.3
SC	FAT	RI	IMF	BMI	CEZ	BII	CHB
0.5	0.010	0.19	0.00	\$13	\$14	\$11	\$19

97b HN MS RAFTSMAN 28X 1405
 Calved 2-24-2014 Cow 43480759 Tattoo 1405
 Sire BVR Raftsman 028X Dam JN Ms 1082 635

Act BW	CED	BW	WW	YW	M	M&G	CEM
52	1.6	2.1	36	59	14	32	0.7
SC	FAT	RI	IMF	BMI	CEZ	BII	CHB
0.8	0.001	0.08	0.00	\$18	\$17	\$18	\$15

97c HN MS RAFTSMAN 28X 1408
 Calved 2-28-2014 Cow 43491912 Tattoo 1408
 Sire BVR Raftsman 028X Dam HN Ms 4N 627

Act BW	CED	BW	WW	YW	M	M&G	CEM
53	1.3	2.9	44	73	16	38	1.4
SC	FAT	RI	IMF	BMI	CEZ	BII	CHB
0.6	0.002	0.23	-0.05	\$15	\$15	\$13	\$18

97d BVR CHELSEA 440B
 Calved 4-20-2014 Cow 43483631 Tattoo 440B
 Sire M6 Ciscos Buckaroo 155 Dam BVR Susanna 124Y

Act BW	CED	BW	WW	YW	M	M&G	CEM
0.6	4.4	58	93	23	52	3.2	
SC	FAT	RI	IMF	BMI	CEZ	BII	CHB
1.2	0.019	0.51	0.10	\$21	\$16	\$18	\$28

100a BB MS 1050 ADVANCE 4016
 Calved 2-3-2014 Cow 43480660 Tattoo 4016B
 Sire CX 3027 Advance1050 Dam BB Ms 626 Neon 1139

Act BW	CED	BW	WW	YW	M	M&G	CEM
70	4.1	2.6	56	93	29	58	3.8
SC	FAT	RI	IMF	BMI	CEZ	BII	CHB
0.8	-0.003	0.56	0.15	\$19	\$18	\$13	\$31

100b BB MS 159 DOMINO 4073
 Calved 3-20-2013 Cow 43493799 Tattoo 4073B
 Sire CL 1 Domino 159Y Dam BB Ms 5105 Domino 8036

Act BW	CED	BW	WW	YW	M	M&G	CEM
78	2.1	3.1	48	72	28	52	1.7
SC	FAT	RI	IMF	BMI	CEZ	BII	CHB
0.7	0.002	0.21	-0.03	\$14	\$16	\$12	\$20

100c BB MS 1003 MARK CLASS 4075
 Calved 3-20-2014 Cow 43493804 Tattoo 4075B
 SireBB4411 MarkClass1003DamBB Ms2637BJDomino0107

Act BW	CED	BW	WW	YW	M	M&G	CEM
81	0.9	4.6	50	78	20	45	-0.6
SC	FAT	RI	IMF	BMI	CEZ	BII	CHB
0.8	-0.021	0.34	-0.02	\$16	\$13	\$15	\$22

100d BB MS 1003 MARK CLASS 4097
 Calved 4-3-2014 Cow 43502124 Tattoo 4097B
 SireBB4411 Mark Class1003DamBB Ms 1065Domino 7044

Act BW	CED	BW	WW	YW	M	M&G	CEM
75	1.1	3.8	44	66	19	40	0.3
SC	FAT	RI	IMF	BMI	CEZ	BII	CHB
0.6	-0.013	0.14	-0.02	\$15	\$15	\$14	\$19

98a BB MS ADVANTAGE 4120
 Calved 4-21-2014 Cow 43502155 Tattoo 4120B
 Sire BB 626 Advantage 1059 DamBB Ms1065Domino7093

Act BW	CED	BW	WW	YW	M	M&G	CEM
75	0.6	3.9	50	85	22	47	2.6
SC	FAT	RI	IMF	BMI	CEZ	BII	CHB
0.4	-0.012	0.45	0.01	\$13	\$14	\$10	\$24

98b BB MS ADVANTAGE 4121
 Calved 4-23-2014 Cow 43502156 Tattoo 4121B
 Sire BB 626 Advantage1059 DamBBMs0135Mark Don6142

Act BW	CED	BW	WW	YW	M	M&G	CEM
76	-0.9	4.2	49	85	20	45	2.1
SC	FAT	RI	IMF	BMI	CEZ	BII	CHB
0.6	-0.031	0.50	-0.04	\$15	\$13	\$12	\$24

101a BB MS 994 DOMINO 4100
 Calved 4-5-2014 Cow 43502133 Tattoo 4100B
 Sire CL 1 Domino994W Dam BB Ms 3307Mark Don9081

Act BW	CED	BW	WW	YW	M	M&G	CEM
77	0.1	4.4	50	83	29	54	-1.7
SC	FAT	RI	IMF	BMI	CEZ	BII	CHB
0.8	-0.004	0.49	0.04	\$14	\$13	\$13	\$24

101b BB MS 994 DOMINO 4139
 Calved 5-9-2014 Cow 43512097 Tattoo 4139B
 Sire CL 1 Domino 994W Dam BB Ms 1065 Domino 5075

Act BW	CED	BW	WW	YW	M	M&G	CEM
77	0.4	4.8	54	91	26	53	-1.1
SC	FAT	RI	IMF	BMI	CEZ	BII	CHB
0.8	0.013	0.40	0.08	\$15	\$13	\$12	\$26

101c BB MS ADVANTAGE 4146
 Calved 5-19-2014 Cow 43512104 Tattoo 4146B
 Sire BB 626 Advantage 1059 Dam BB Ms Domino 5011

Act BW	CED	BW	WW	YW	M	M&G	CEM
66	1.4	3.0	50	83	20	45	3.6
SC	FAT	RI	IMF	BMI	CEZ	BII	CHB
0.4	-0.022	0.55	-0.02	\$15	\$15	\$11	\$25

98c BB MS ADVANTAGE 4130
 Calved 5-2-2014 Cow 43512088 Tattoo 4130B
 Sire BB 626 Advantage1059 DamBB Ms 3007Mark Don0102

Act BW	CED	BW	WW	YW	M	M&G	CEM
79	0.0	3.8	48	78	27	51	1.3
SC	FAT	RI	IMF	BMI	CEZ	BII	CHB
0.6	-0.039	0.55	-0.07	\$14	\$13	\$11	\$23

98d BB MS ADVANTAGE 4133
 Calved 5-4-2014 Cow 43512091 Tattoo 4133B
 Sire BB 626 Advantage 1059 Dam BB Ms BJ Domino 8029

Act BW	CED	BW	WW	YW	M	M&G	CEM
73	-0.2	2.8	51	82	23	49	1.8
SC	FAT	RI	IMF	BMI	CEZ	BII	CHB
0.7	-0.005	0.56	0.02	\$16	\$14	\$13	\$24

99a BB MS 1050 ADVANCE 4103
 Calved 4-7-2014 Cow 43502138 Tattoo 4103B
 Sire CX 3027 Advance 1050 Dam BB Ms 7127 Neon 1134

Act BW	CED	BW	WW	YW	M	M&G	CEM
71	4.1	2.3	48	78	27	51	3.7
SC	FAT	RI	IMF	BMI	CEZ	BII	CHB
0.8	0.008	0.48	0.18	\$20	\$19	\$16	\$26

102a BB MS 1050 ADVANCE 4032
 Calved 2-21-2014 Cow 43480675 Tattoo 4032B
 SireCX 3027 Advance 1050 Dam BB Ms 7127 Neon 2058

Act BW	CED	BW	WW	YW	M	M&G	CEM
74	3.0	3.6	56	89	27	55	2.7
SC	FAT	RI	IMF	BMI	CEZ	BII	CHB
0.8	0.013	0.52	0.16	\$19	\$17	\$14	\$29

HEREFORD HEIFERS

102b BB MS 1050 ADVANCE 4134

Calved 5-5-2014 Cow 43512092 Tattoo 4134B
Sire CX 3027 Advance 1050 Dam BB Ms 3007 Mark Don2131

Act BW	CED	BW	WW	YW	M	M&G	CEM
70	3.6	3.0	52	79	32	58	2.5
SC	FAT	RI	IMF	BMI	CEZ	BII	CHB
1.0	0.001	0.44	0.09	\$19	\$18	\$16	\$26

102c BB MS 2059 DOMINO 4143

Calved 5-15-2014 Cow 43512101 Tattoo 4143B
Sire BB 018 Domino 2059 Dam BB Ms 7127 Neon 2043

Act BW	CED	BW	WW	YW	M	M&G	CEM
69	0.8	4.0	53	93	25	52	1.9
SC	FAT	RI	IMF	BMI	CEZ	BII	CHB
0.6	0.021	0.45	0.06	\$14	\$14	\$10	\$25

102d BB MS 1050 ADVANCE 4144

Calved 5-17-2014 Cow 43512102 Tattoo 4144B
Sire CX 3027 Advance 1050 Dam BB Ms 2637 Domino2078

Act BW	CED	BW	WW	YW	M	M&G	CEM
66	3.8	2.3	46	71	26	49	2.2
SC	FAT	RI	IMF	BMI	CEZ	BII	CHB
1.0	0.005	0.33	0.15	\$21	\$19	\$18	\$24

102e C4004

Calved 3-17-2014 Cow unregistered Tattoo C4004
Sire CX 3027 Advance 1050 Dam Commercial Hereford Cow

Act BW	CED	BW	WW	YW	M	M&G	CEM
69							
SC	FAT	RI	IMF	BMI	CEZ	BII	CHB

103a BB MS EXCLUSIVE 4078

Calved 3-21-2014 Cow 43493807 Tattoo 4078B
Sire BB Exclusive 1026 Dam BB Ms 334 Domino 1003

Act BW	CED	BW	WW	YW	M	M&G	CEM
73	3.6	2.1	30	51	22	37	1.6
SC	FAT	RI	IMF	BMI	CEZ	BII	CHB
0.5	0.013	0.14	0.27	\$17	\$18	\$16	\$18

103b BB MS 994 DOMINO 4089

Calved 3-27-2014 Cow 43493825 Tattoo 4089B
Sire CL 1 Domino 994W 1ET Dam BB Ms BJ Domino 9037

Act BW	CED	BW	WW	YW	M	M&G	CEM
78	-0.4	4.0	44	75	25	47	-2.5
SC	FAT	RI	IMF	BMI	CEZ	BII	CHB
1.0	-0.003	0.33	0.04	\$16	\$13	\$16	\$20

103c BB MS 994 DOMINO 4110

Calved 4-11-2014 Cow 43502146 Tattoo 4110B
Sire CL1 Domino 994W 1ET Dam BB Ms 3007 Mark Donald 9099

Act BW	CED	BW	WW	YW	M	M&G	CEM
77	0.1	4.0	47	80	29	52	-1.7
SC	FAT	RI	IMF	BMI	CEZ	BII	CHB
0.8	-0.014	0.42	-0.05	\$13	\$13	\$12	\$21

103d N1416

Calved 3-27-2014 Cow unregistered Tattoo N1416
Sire registered Hereford bull Dam HN Ms 1082 517

Act BW	CED	BW	WW	YW	M	M&G	CEM
70							
SC	FAT	RI	IMF	BMI	CEZ	BII	CHB

104a C4015 (ANGUS HEREFORD CROSS)

Calved 5-10-2014 Cow unregistered Tattoo C4015
Sire Registered Hereford Bull Dam Registered Angus Cow

Act BW	CED	BW	WW	YW	M	M&G	CEM
65							
SC	FAT	RI	IMF	BMI	CEZ	BII	CHB

104b C4014 (ANGUS HEREFORD CROSS)

Calved 5-4-2014 Cow unregistered Tattoo C4014
Sire Registered Hereford Bull Dam Registered Angus Cow

Act BW	CED	BW	WW	YW	M	M&G	CEM
68							
SC	FAT	RI	IMF	BMI	CEZ	BII	CHB

104c C4016 (ANGUS HEREFORD CROSS)

Calved 6-1-2014 Cow unregistered Tattoo C4016
Sire Registered Hereford Bull Dam Registered Angus Cow

Act BW	CED	BW	WW	YW	M	M&G	CEM
66							
SC	FAT	RI	IMF	BMI	CEZ	BII	CHB

REFERENCE SIRES

BB 3027 DOMINO 1018

BW	3.4	WW	53	YW	103	M	29	M&G	56
----	-----	----	----	----	-----	---	----	-----	----

BB 626 ADVANTAGE 1059

BW	3.6	WW	55	YW	101	M	24	M&G	52
----	-----	----	----	----	-----	---	----	-----	----

CHURCHILL PINSTRIPE 9124W

BW	2.8	WW	56	YW	98	M	24	M&G	52
----	-----	----	----	----	----	---	----	-----	----

SR SAGA 239W

BW	3.1	WW	53	YW	90	M	23	M&G	49
----	-----	----	----	----	----	---	----	-----	----

CL 1 DOMINIO 159Y

BW	3.5	WW	45	YW	81	M	17	M&G	39
----	-----	----	----	----	----	---	----	-----	----

BB EXCLUSIVE 1026

BW	2.5	WW	48	YW	80	M	29	M&G	53
----	-----	----	----	----	----	---	----	-----	----

CX 3027 ADVANCE 1050

BW	1.4	WW	52	YW	79	M	32	M&G	58
----	-----	----	----	----	----	---	----	-----	----

CL 1 DOMINO 994W

BW	4.5	WW	52	YW	97	M	30	M&G	57
----	-----	----	----	----	----	---	----	-----	----

BB YANKEE 8053

BW	5.0	WW	65	YW	101	M	18	M&G	50
----	-----	----	----	----	-----	---	----	-----	----

BB 626 NEON 0011

BW	5.9	WW	61	YW	117	M	26	M&G	57
----	-----	----	----	----	-----	---	----	-----	----

BVR RAFTSMAN 028X

BW	3.9	WW	46	YW	73	M	16	M&G	39
----	-----	----	----	----	----	---	----	-----	----

BB 4411 MARK CLASS 1003

BW	4.0	WW	42	YW	62	M	19	M&G	39
----	-----	----	----	----	----	---	----	-----	----

BB 4411 MARK CLASS 1006

BW	3.4	WW	34	YW	51	M	19	M&G	36
----	-----	----	----	----	----	---	----	-----	----

BB MARK DONALD 3007

BW	2.9	WW	43	YW	61	M	33	M&G	55
----	-----	----	----	----	----	---	----	-----	----

BB SUPREMACY 1001

BW	4.7	WW	29	YW	39	M	13	M&G	28
----	-----	----	----	----	----	---	----	-----	----

JACS MISSING LINK 9938

BW	0.9	WW	47	YW	77	M	24
----	-----	----	----	----	----	---	----

PL NEW DESIGN 9001

BW	1.8	WW	38	YW	74	M	22
----	-----	----	----	----	----	---	----

CONNELY CONSENSUS 7229

BW	1.8	WW	62	YW	104	M	25
----	-----	----	----	----	-----	---	----

DC POMONA DOC MAC C932P

BW	0.3	WW	32	YW	63	M	18
----	-----	----	----	----	----	---	----

DH WANNA TRADE WOOPS

BW	1.4	WW	26	YW	46	M	10
----	-----	----	----	----	----	---	----

HEREFORD

ANGUS

CHAROLAIS



3841 FM 2782 Nacogdoches, TX 75964

First Class

